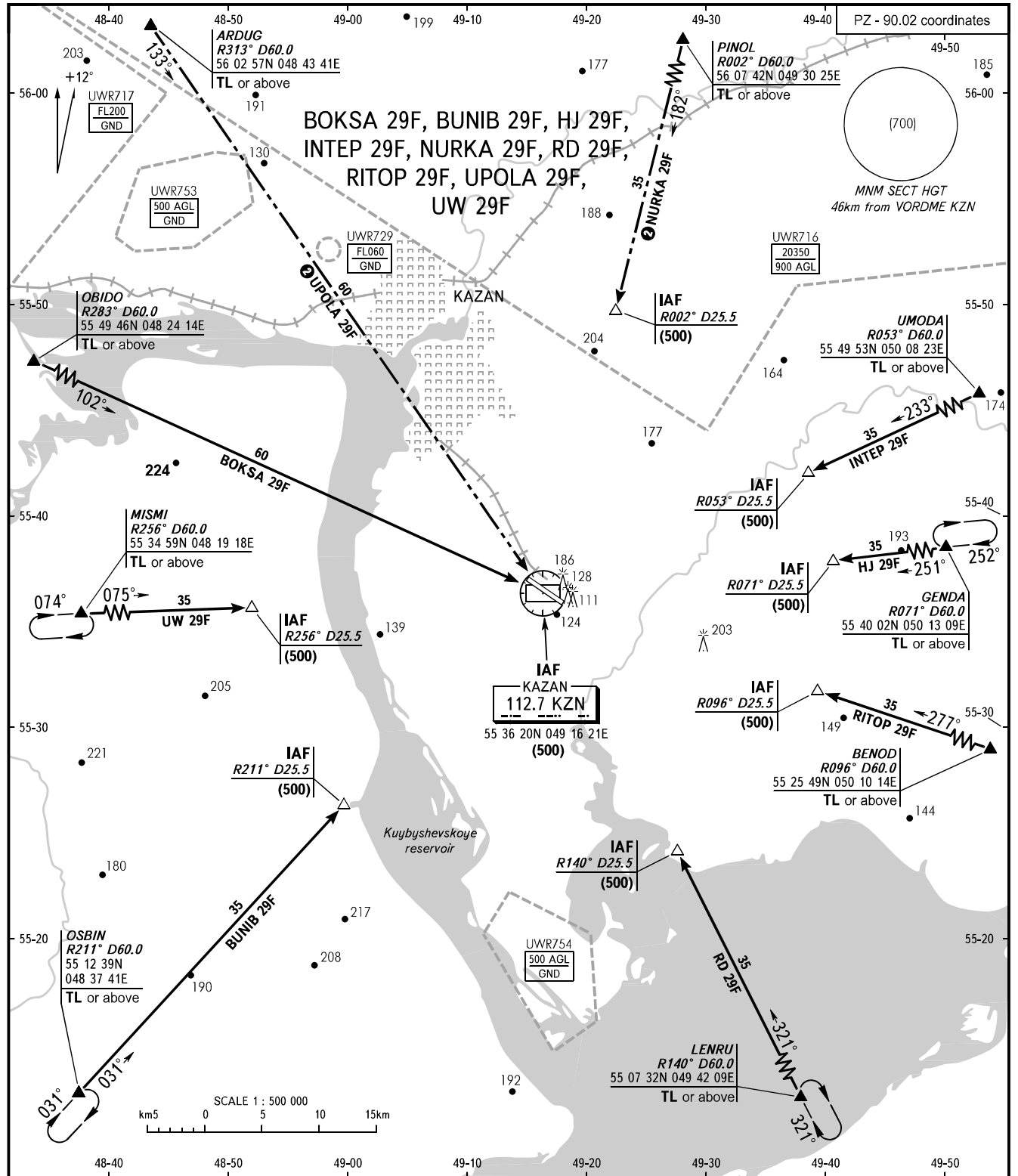


STANDARD ARRIVAL CHART  
INSTRUMENT (STAR) - ICAO

KAZAN, RUSSIA  
KAZAN  
VORDME RWY 29

TRANSITION  
LEVEL : ①



CONTROL Sector 3           **128.625**  
RADAR                       **119.400**  
TOWER                       **120.300**

- ① TRANSITION LEVEL:  
- FL050 when atmospheric pressure is 749mm mercury column or above;  
- FL060 when atmospheric pressure is 748-722mm mercury column;  
- FL070 when atmospheric pressure is 721mm mercury column or less.

② Only for Russian users of airspace.

BEARINGS AND TRACKS ARE MAGNETIC  
ALTITUDES, HEIGHTS AND ELEVATIONS ARE IN METRES  
DISTANCES ARE IN KILOMETRES