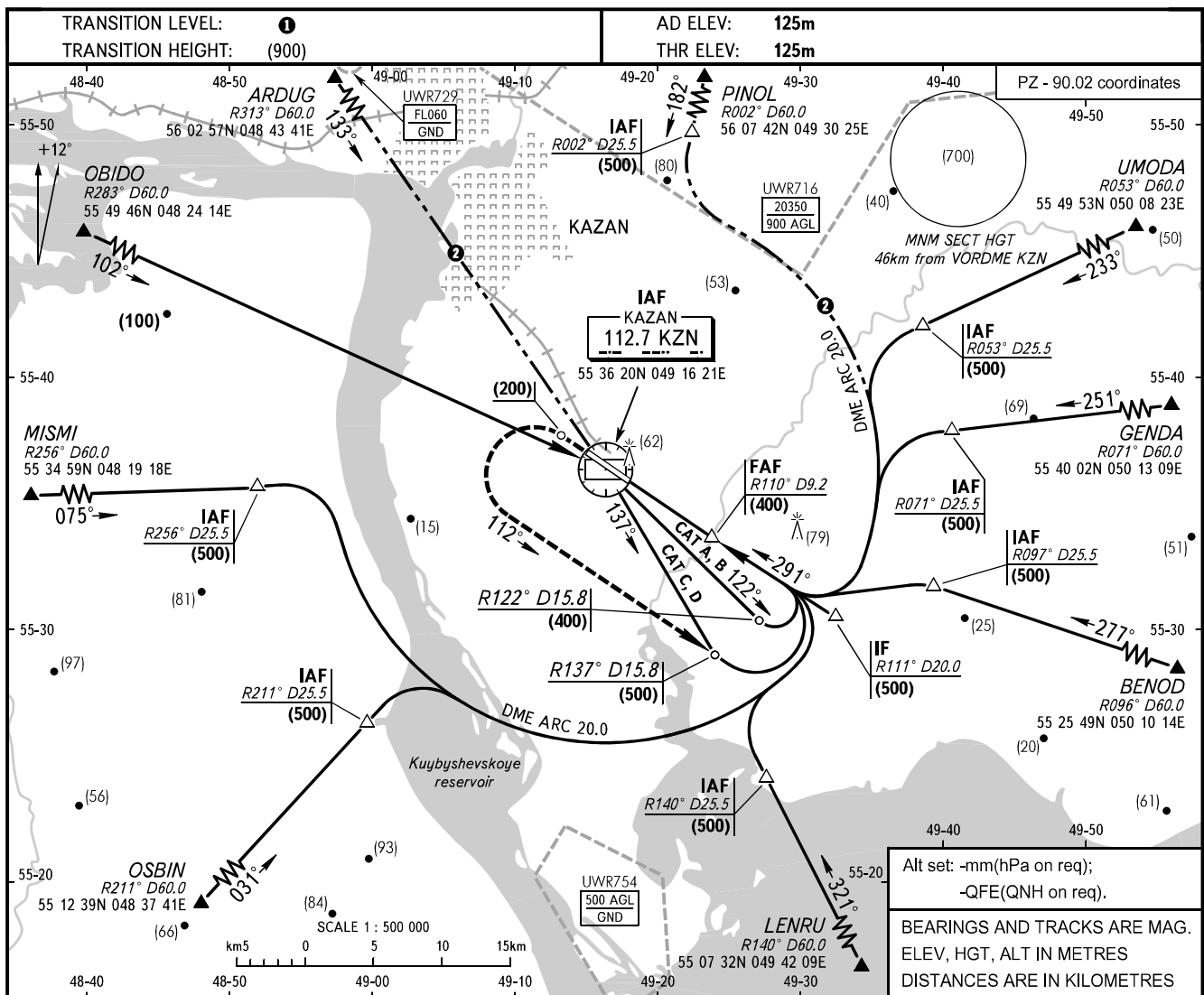


**INSTRUMENT
APPROACH
CHART - ICAO**

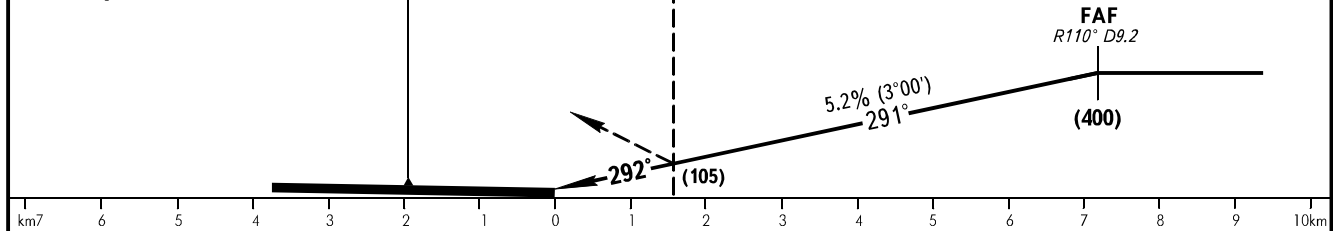
**KAZAN, RUSSIA
KAZAN
VORDME RWY 29**

RADAR TOWER
119.400
120.300



MISSED APPROACH
Climb on track 292° to (200), then turn LEFT on track 112° climbing to (500), then according to chart.

THR DISTANCE	10	9	8	7	6	5	4	3	2	1
DME KZN	11.9	10.9	9.9	8.9	7.9	6.9	5.9	4.9	3.9	2.9
HAT	493	493	439	386	332	279	226	173	120	67



OCA/H		A	B	C	D								
Straight-in	VORDME	227(102)	227(102)	227(102)	227(102)								
	Approach												
GROUND SPEED		km/h	150	180	210	240	270	300	330	360	390	420	450
FAF-MAPt 5610m		min:sec	2.15	1.52	1.36	1.24	1.15	1.07	1.01	0.56	0.52	0.48	0.45
RATE OF DESCENT		m/s	2.2	2.6	3.0	3.5	3.9	4.3	4.8	5.2	5.6	6.1	6.5

1 TRANSITION LEVEL:
- FL050 when atmospheric pressure is 749mm mercury column or above;
- FL060 when atmospheric pressure is 748-722mm mercury column;
- FL070 when atmospheric pressure is 721mm mercury column or less.

2 Only for Russian users of airspace.