

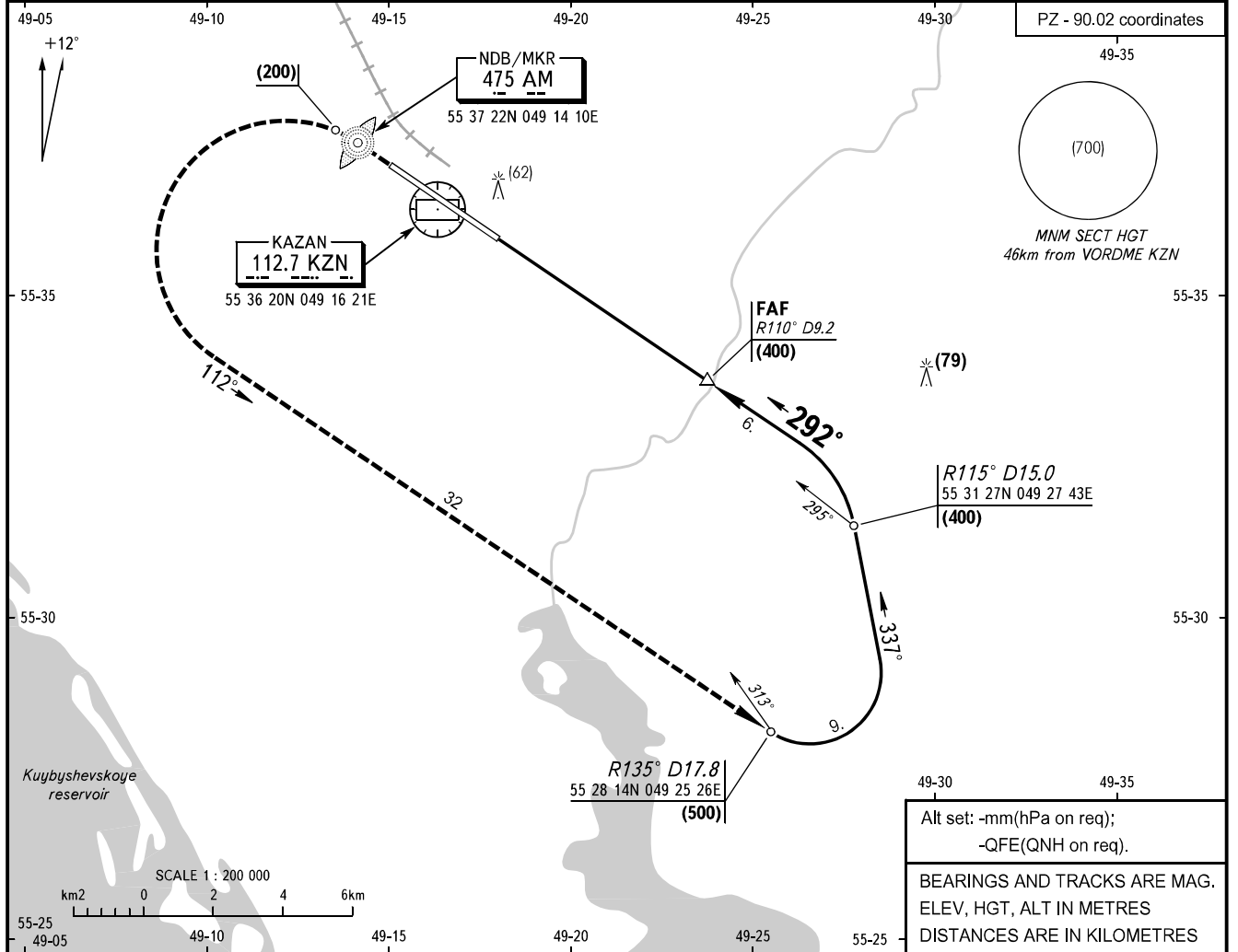
**INSTRUMENT
APPROACH
CHART - ICAO**

**KAZAN, RUSSIA
KAZAN
NDB RWY 29**

RADAR TOWER
119.400
120.300

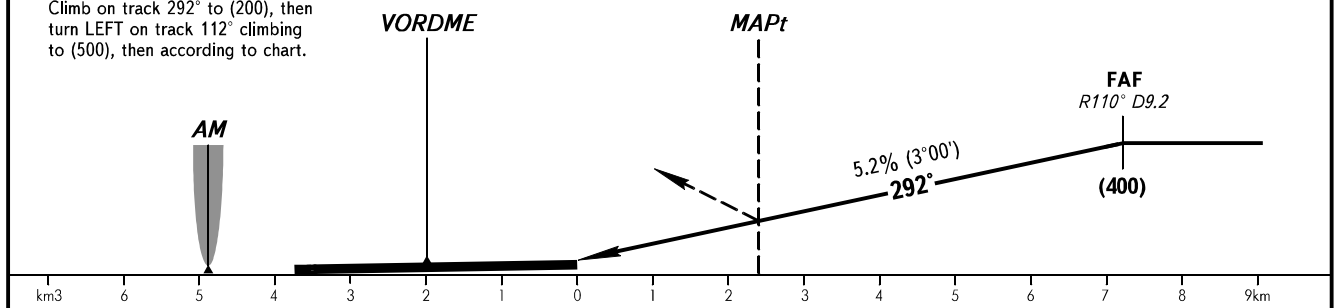
TRANSITION LEVEL: **1**
TRANSITION HEIGHT: (900)

AD ELEV: **125m**
THR ELEV: **125m**



Alt set: -mm(hPa on req);
-QFE(QNH on req).
BEARINGS AND TRACKS ARE MAG.
ELEV, HGT, ALT IN METRES
DISTANCES ARE IN KILOMETRES

MISSED APPROACH
Climb on track 292° to (200), then turn LEFT on track 112° climbing to (500), then according to chart.



OCA/H		A	B	C	D
Straight-in	NDB	261(136)	261(136)	261(136)	261(136)
	Approach				

1 TRANSITION LEVEL:
- FL050 when atmospheric pressure is 749mm mercury column or above;
- FL060 when atmospheric pressure is 748-722mm mercury column;
- FL070 when atmospheric pressure is 721mm mercury column or less.

GROUND SPEED	km/h	150	180	210	240	270	300	330	360	390	420	450
FAF-MAPt 4960m	min:sec	1.59	1.39	1.25	1.14	1.06	1.00	0.54	0.50	0.46	0.43	0.40
RATE OF DESCENT	m/s	2.2	2.6	3.0	3.5	3.9	4.3	4.8	5.2	5.6	6.1	6.5