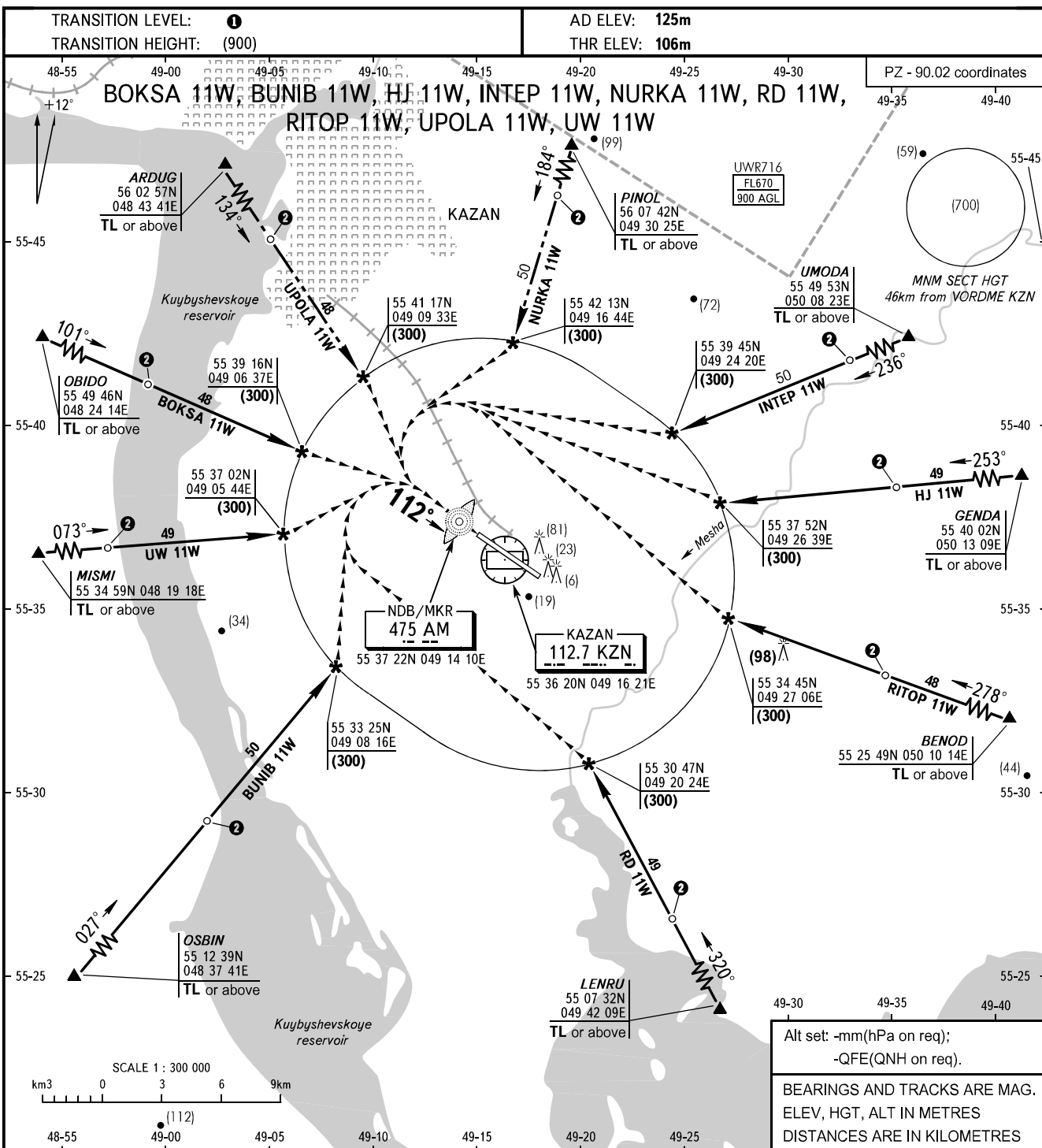


VISUAL
APPROACH
CHART - ICAO

RADAR 119.400
TOWER 120.300

KAZAN, RUSSIA
KAZAN
RWY 11



WARNING
The radiuses of visual manoeuvring (circling) area are as follows:
A - 3120m
B - 4900m
C - 7850m
D, D widebody - 9790m.

- ① **TRANSITION LEVEL:**
 - FL050 when atmospheric pressure is 749mm mercury column or above;
 - FL060 when atmospheric pressure is 748-722mm mercury column;
 - FL070 when atmospheric pressure is 721mm mercury column or less.
- ② Do not descend below (600) up to D20.0 KZN.

ACFT CAT		A	B	C	D	D-widebody
MET conditions	MDH, m	150	150	180	210	300
	Cloud base, m	200	200	280	310	400
	Visibility, m	1600	2500	3000	4000	5000

CHANGE: New chart