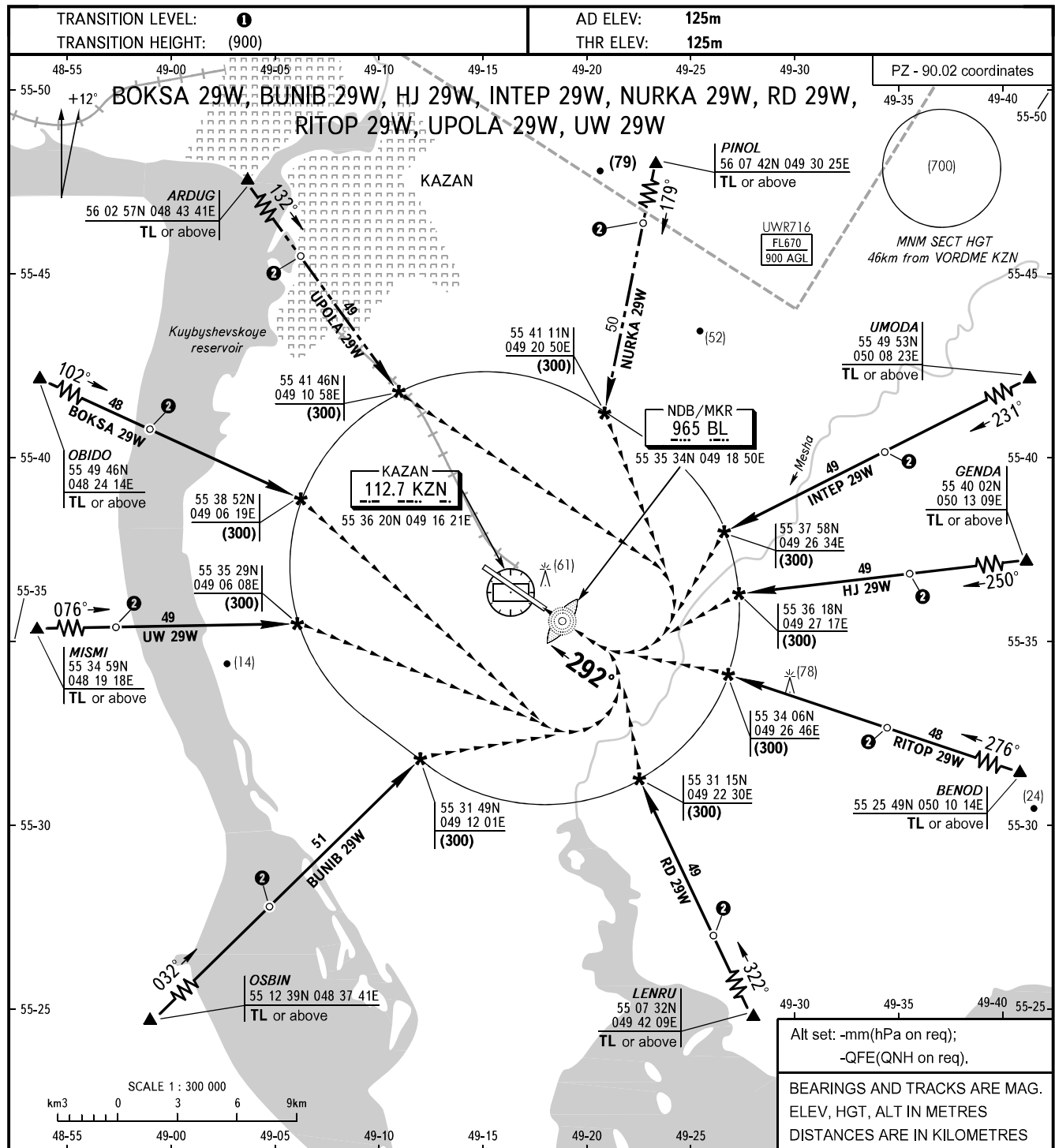


VISUAL
APPROACH
CHART - ICAO

RADAR	119.400
TOWER	120.300

KAZAN, RUSSIA
KAZAN
RWY 29



WARNING

The radiuses of visual manoeuvring (circling) area are as follows:
A - 3120m
B - 4900m
C - 7850m
D, D widebody - 9790m.

1 TRANSITION LEVEL:

- FL050 when atmospheric pressure is 749mm mercury column or above;
- FL060 when atmospheric pressure is 748-722mm mercury column;
- FL070 when atmospheric pressure is 721mm mercury column or less.

2 Do not descend below (600) up to D20.0 KZN.

ACFT CAT		A	B	C	D	D-widebody
MET conditions	MDH, m	150	150	180	210	300
	Cloud base, m	200	200	280	310	400
	Visibility, m	1600	2500	3000	4000	5000