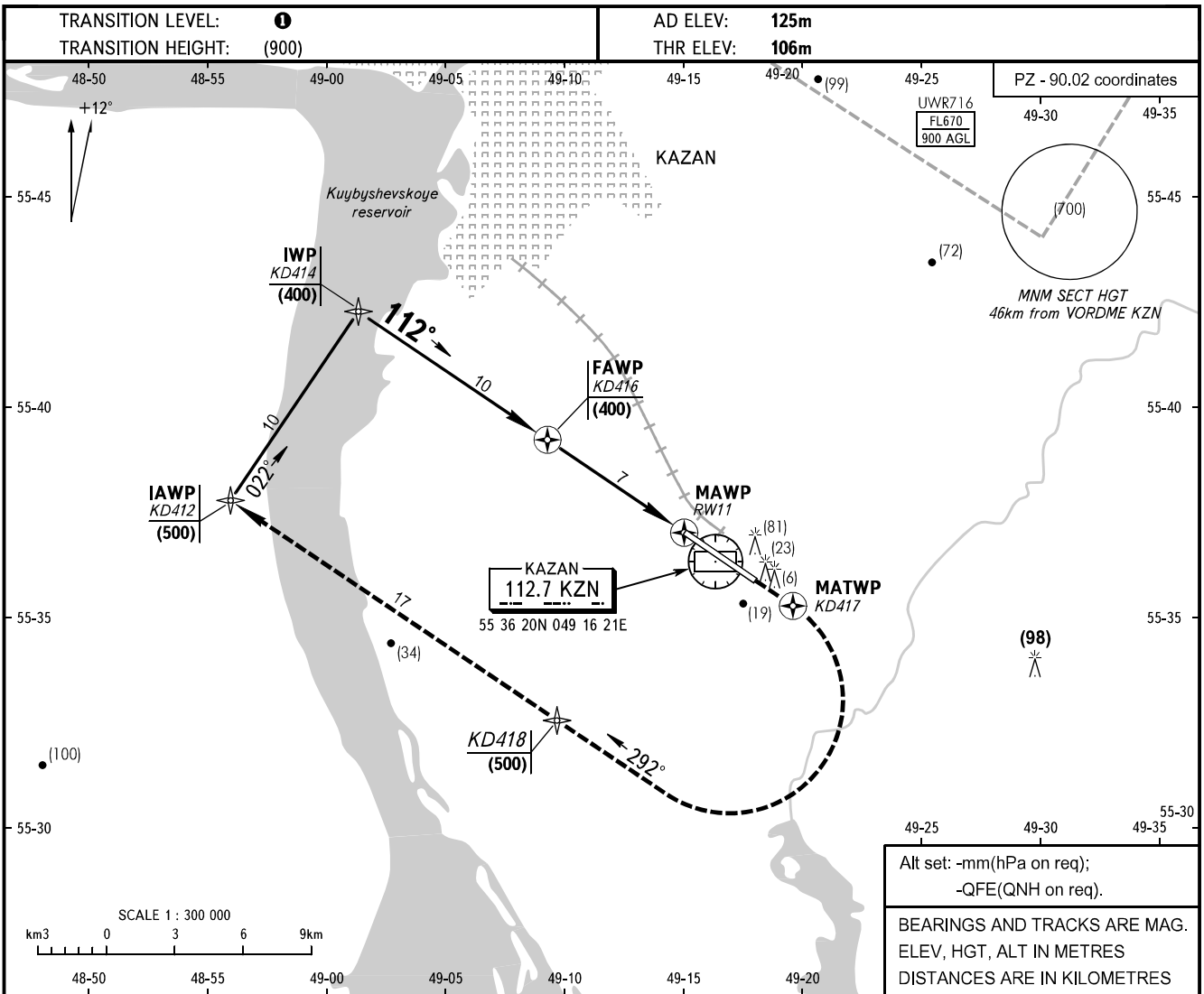


**INSTRUMENT
APPROACH
CHART - ICAO**

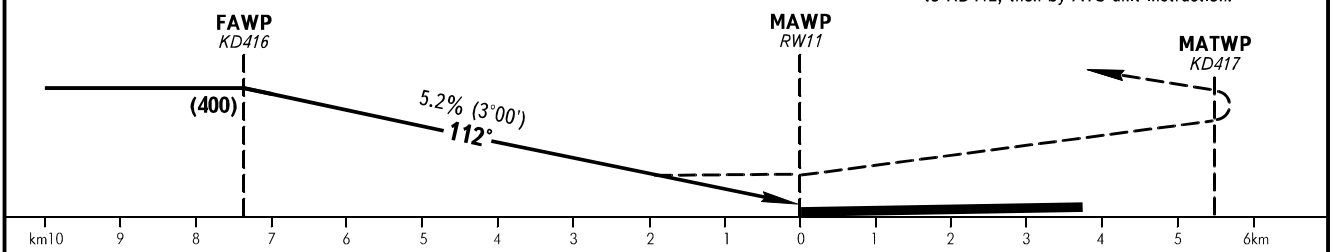
**KAZAN, RUSSIA
KAZAN
RNAV (GNSS) RWY 11**

RADAR TOWER
119.400
120.300



Distance to RW11	7.27	7.0	6.0	5.0	4.0	3.0	2.0	1.0
HAT	400	380	330	275	225	175	120	70

MISSED APPROACH
Climb on track 112° to KD417, then turn RIGHT on track 292° climbing to (500) via KD418 to KD417, then by ATS unit instruction.



OCA/H		A	B	C	D
Straight-in	GNSS	208(102)	208(102)	208(102)	208(102)
Approach					

① TRANSITION LEVEL:
- FL050 when atmospheric pressure is 749mm mercury column or above;
- FL060 when atmospheric pressure is 748-722mm mercury column;
- FL070 when atmospheric pressure is 721mm mercury column or less.

GROUND SPEED	km/h	150	180	210	240	270	300	330	360	390	420	450	
FAF-MAPt	7270m	min:sec	2.54	2.25	2.05	1.49	1.37	1.27	1.19	1.12	1.07	1.02	0.58
RATE OF DESCENT	m/s	2.2	2.6	3.0	3.5	3.9	4.3	4.8	5.2	5.6	6.1	6.5	

CHANGE: New chart