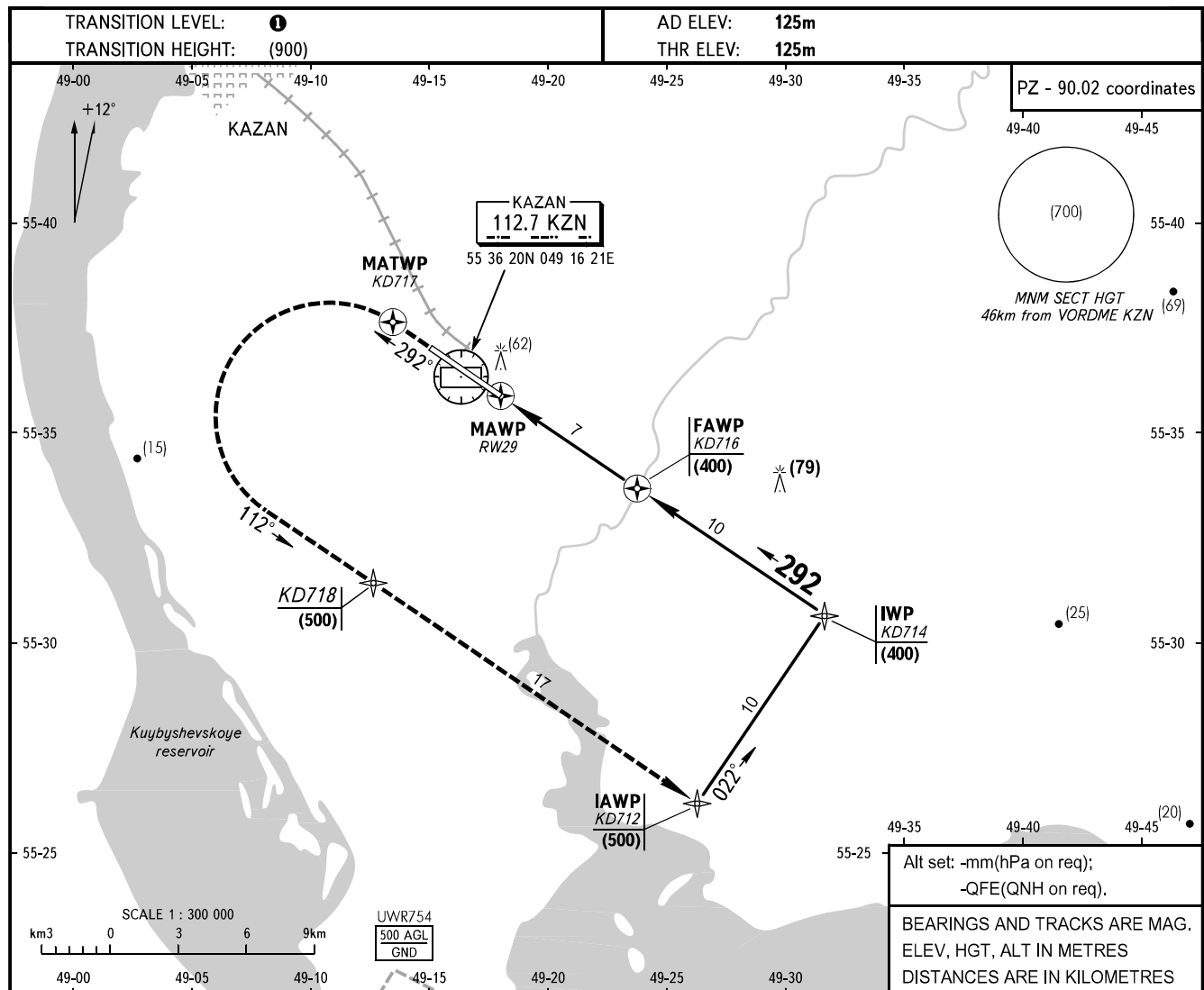


**INSTRUMENT
APPROACH
CHART - ICAO**

RADAR TOWER	119.400
TOWER	120.300

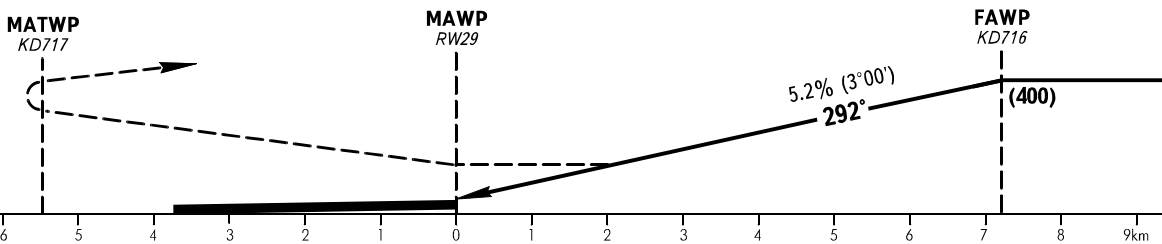
KAZAN, RUSSIA
KAZAN
RNAV (GNSS) RWY 29



MISSED APPROACH

Climb on track 292° to KD717, then turn LEFT on track 112° climbing to (500) via KD718 to KD712, then by ATS unit instruction.

Distance to RW29	7.27	7.0	6.0	5.0	4.0	3.0	2.0	1.0
HAT	400	380	330	275	225	175	120	70



OCA/H		A	B	C	D
Straight-in	GNSS	261(136)	261(136)	261(136)	261(136)
	Approach				

① TRANSITION LEVEL:
- FL050 when atmospheric pressure is 749mm mercury column or above;
- FL060 when atmospheric pressure is 748-722mm mercury column;
- FL070 when atmospheric pressure is 721mm mercury column or less.

GROUND SPEED	km/h	150	180	210	240	270	300	330	360	390	420	450
FAF-MAPt 7270m	min:sec	2.54	2.25	2.05	1.49	1.37	1.27	1.19	1.12	1.07	1.02	0.58
RATE OF DESCENT	m/s	2.2	2.6	3.0	3.5	3.9	4.3	4.8	5.2	5.6	6.1	6.5