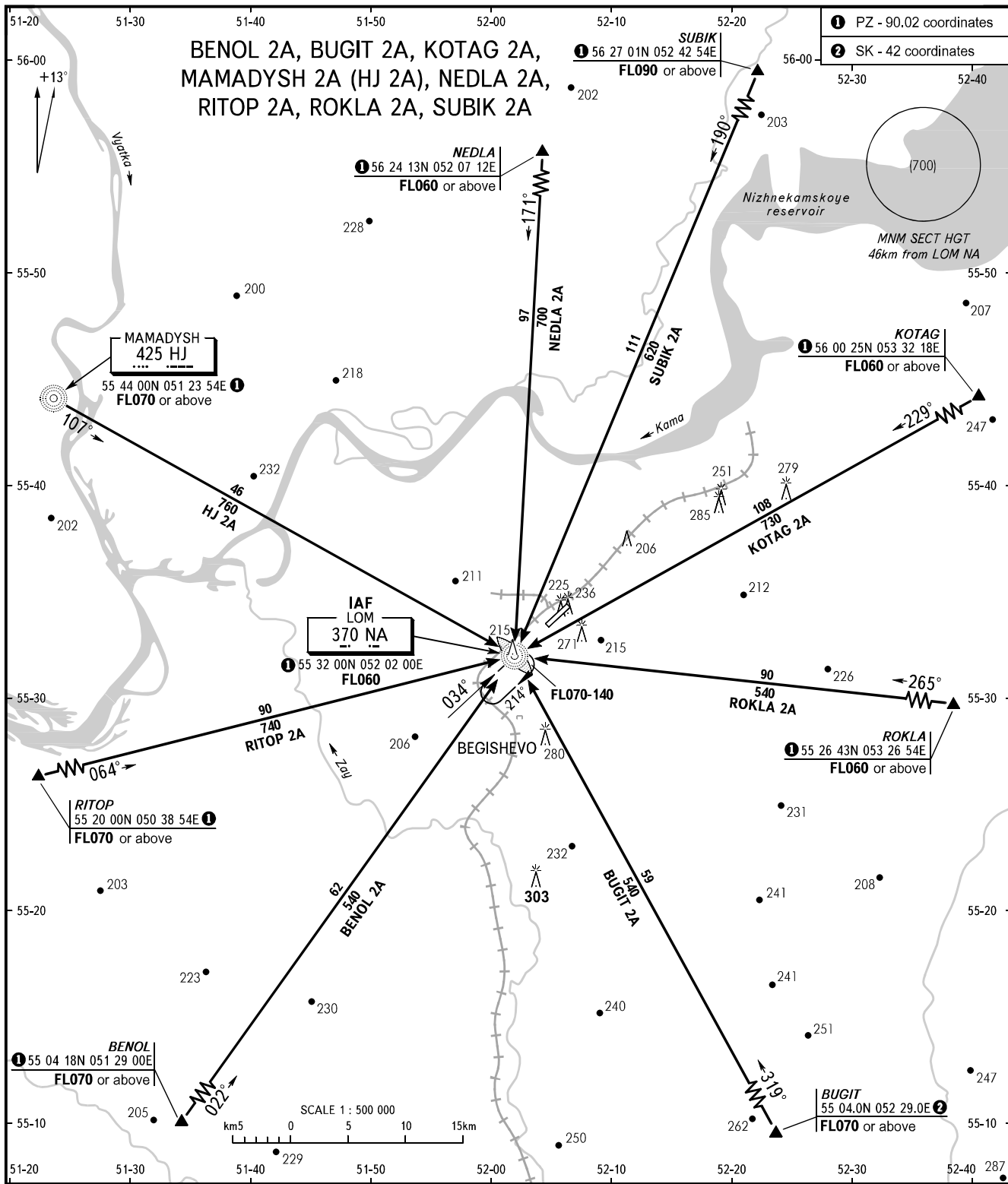


STANDARD ARRIVAL CHART  
INSTRUMENT (STAR) - ICAO

BEGISHEVO, RUSSIA  
BEGISHEVO  
RWY 03

TRANSITION  
LEVEL : 3



1 PZ - 90.02 coordinates  
2 SK - 42 coordinates

**3 TRANSITION LEVEL:**  
- FL040 when atmospheric pressure is 742mm mercury column or above;  
- FL050 when atmospheric pressure is 741-715mm mercury column;  
- FL060 when atmospheric pressure is 714mm mercury column or less.

**WARNING:**  
1. When executing short approach and if unable to reach transition level at fixed distances, pilots shall execute rectangular approach via LMM.  
2. When radar control is not provided, the instrument approach shall be carried out via LMM (transition level), then according to the rectangular traffic pattern.

CHANGE: CRP SUBIK COORD

RADAR TOWER 127.900  
121.200

BEARINGS AND TRACKS ARE MAGNETIC  
ALTITUDES, HEIGHTS AND ELEVATIONS ARE IN METRES  
DISTANCES ARE IN KILOMETRES