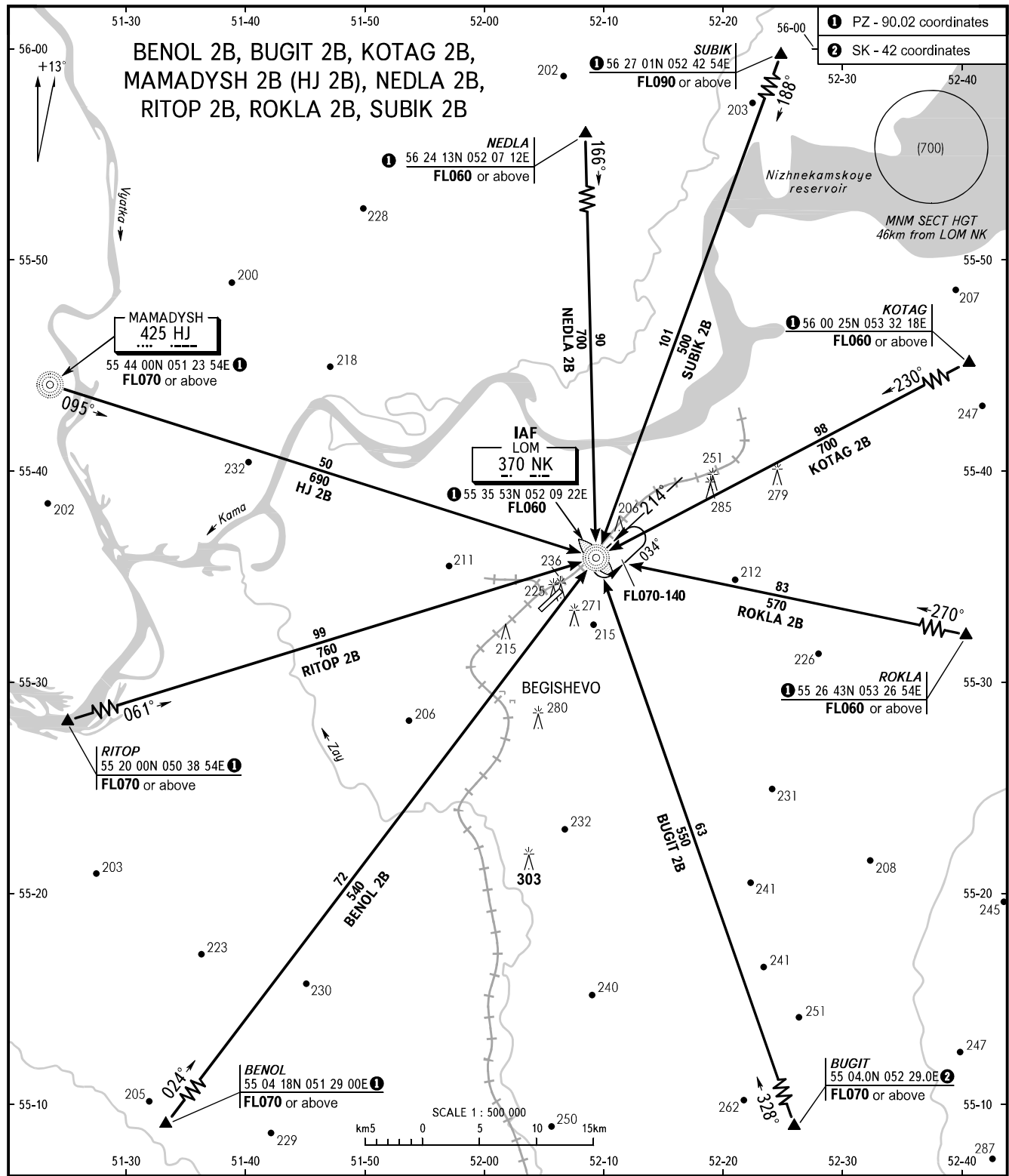


STANDARD ARRIVAL CHART
INSTRUMENT (STAR) - ICAO

TRANSITION
LEVEL : 3

BEGISHEVO, RUSSIA
BEGISHEVO
RWY 21



RADAR 127.900
TOWER 121.200

3 TRANSITION LEVEL:
 - FL040 when atmospheric pressure is 742mm mercury column or above;
 - FL050 when atmospheric pressure is 741-715mm mercury column;
 - FL060 when atmospheric pressure is 714mm mercury column or less.

WARNING:
 1. When executing short approach and if unable to reach transition level at fixed distances, pilots shall execute rectangular approach via LMM.
 2. When radar control is not provided, the instrument approach shall be carried out via LMM (transition level), then according to the rectangular traffic pattern.

BEARINGS AND TRACKS ARE MAGNETIC
 ALTITUDES, HEIGHTS AND ELEVATIONS ARE IN METRES
 DISTANCES ARE IN KILOMETRES

CHANGE: CRP SUBIK COORD