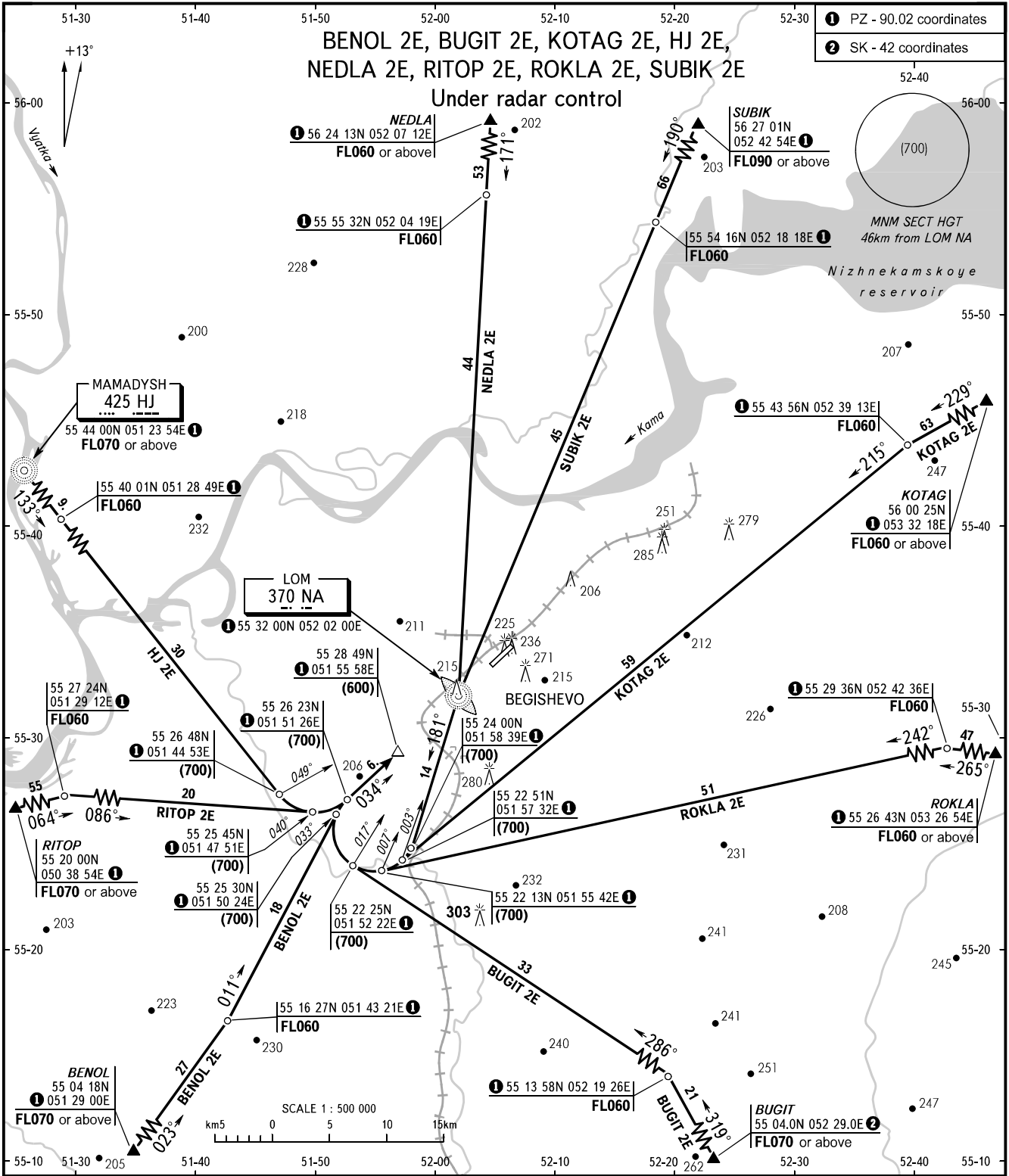


STANDARD ARRIVAL CHART
INSTRUMENT (STAR) - ICAO

BEGISHEVO, RUSSIA
BEGISHEVO
RWY 03

TRANSITION
LEVEL : ③



③ TRANSITION LEVEL:
- FL040 when atmospheric pressure is 742mm mercury column or above;
- FL050 when atmospheric pressure is 741-715mm mercury column;
- FL070 when atmospheric pressure is 714mm mercury column or less.

WARNING:

- When executing short approach and if unable to reach transition level at fixed distances, pilots shall execute rectangular approach via LMM.
- When radar control is not provided, the instrument approach shall be carried out via LMM (transition level), then according to the rectangular traffic pattern.

BEARINGS AND TRACKS ARE MAGNETIC
ALTITUDES, HEIGHTS AND ELEVATIONS ARE IN METRES
DISTANCES ARE IN KILOMETRES

CHANGE: BRG BUGIT 2E