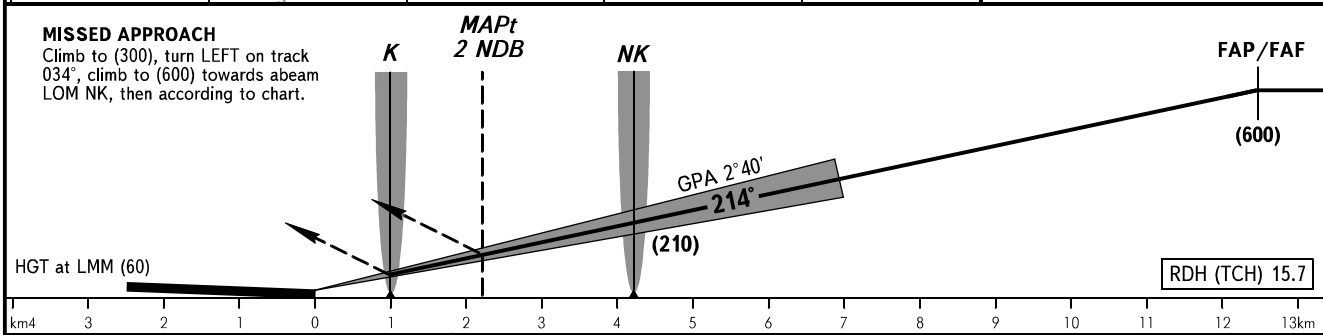
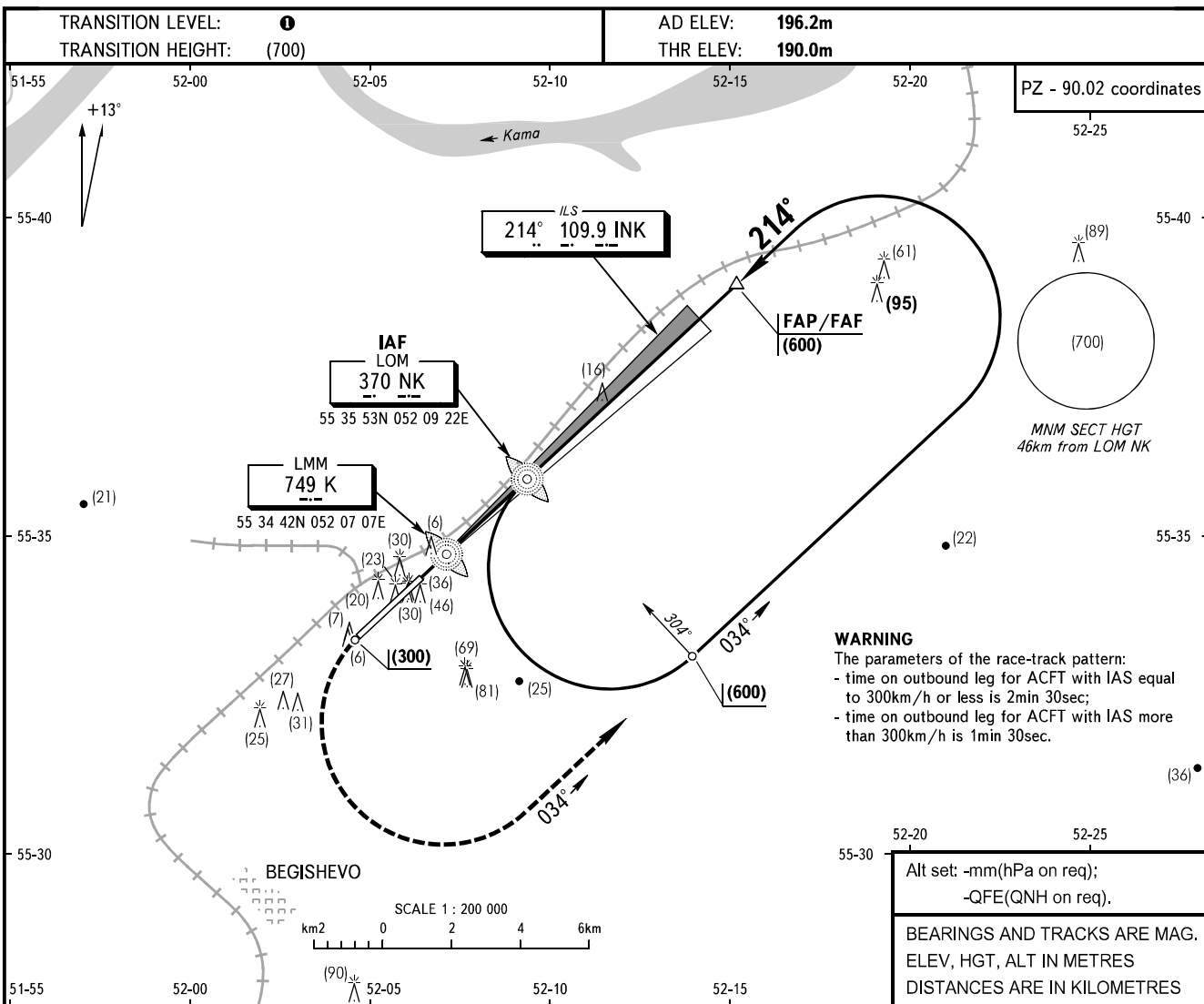


**INSTRUMENT
APPROACH
CHART - ICAO**

| | |
|-------|---------|
| RADAR | 127.900 |
| TOWER | 121.200 |

BEGISHEVO, RUSSIA
BEGISHEVO
ILS, 2 NDB, NDB RWY 21



| OCA/H | | A | B | C | D | |
|---------------|--------------|-----------------|-----------------|----------|----------|----------|
| Straight-in | CAT I | 234(44) | 237(47) | 240(50) | 244(54) | |
| | 2 NDB | With FAF | 311(121) | 311(121) | 311(121) | 311(121) |
| | | WO FAF | 460(270) | 460(270) | 460(270) | 460(270) |
| | Approach | NDB | With FAF | 403(213) | 403(213) | 403(213) |
| WO FAF | | | 405(215) | 405(215) | 405(215) | 405(215) |

TRANSITION LEVEL:
- FL040 when atmospheric pressure is 742mm mercury column or above;
- FL050 when atmospheric pressure is 741-715mm mercury column;
- FL060 when atmospheric pressure is 714mm mercury column or less.

REMARK
FAF is fixed by TAR.

| GROUND SPEED | km/h | 150 | 180 | 210 | 240 | 270 | 300 | 330 | 360 | 390 | 420 | 450 |
|-----------------------------|---------|------|------|------|------|------|------|------|------|------|------|------|
| LOM-THR 4200m | min:sec | 1.41 | 1.24 | 1.12 | 1.03 | 0.56 | 0.50 | 0.46 | 0.42 | 0.39 | 0.36 | 0.34 |
| RATE OF DESCENT (Grad 4.7%) | m/s | 1.9 | 2.3 | 2.7 | 3.1 | 3.5 | 3.9 | 4.3 | 4.6 | 5.0 | 5.4 | 5.8 |

CHANGE: CS, OBST