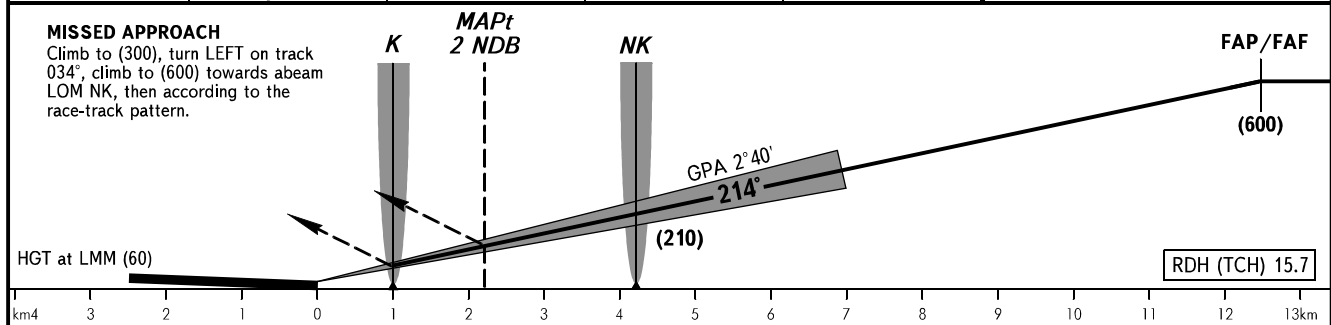
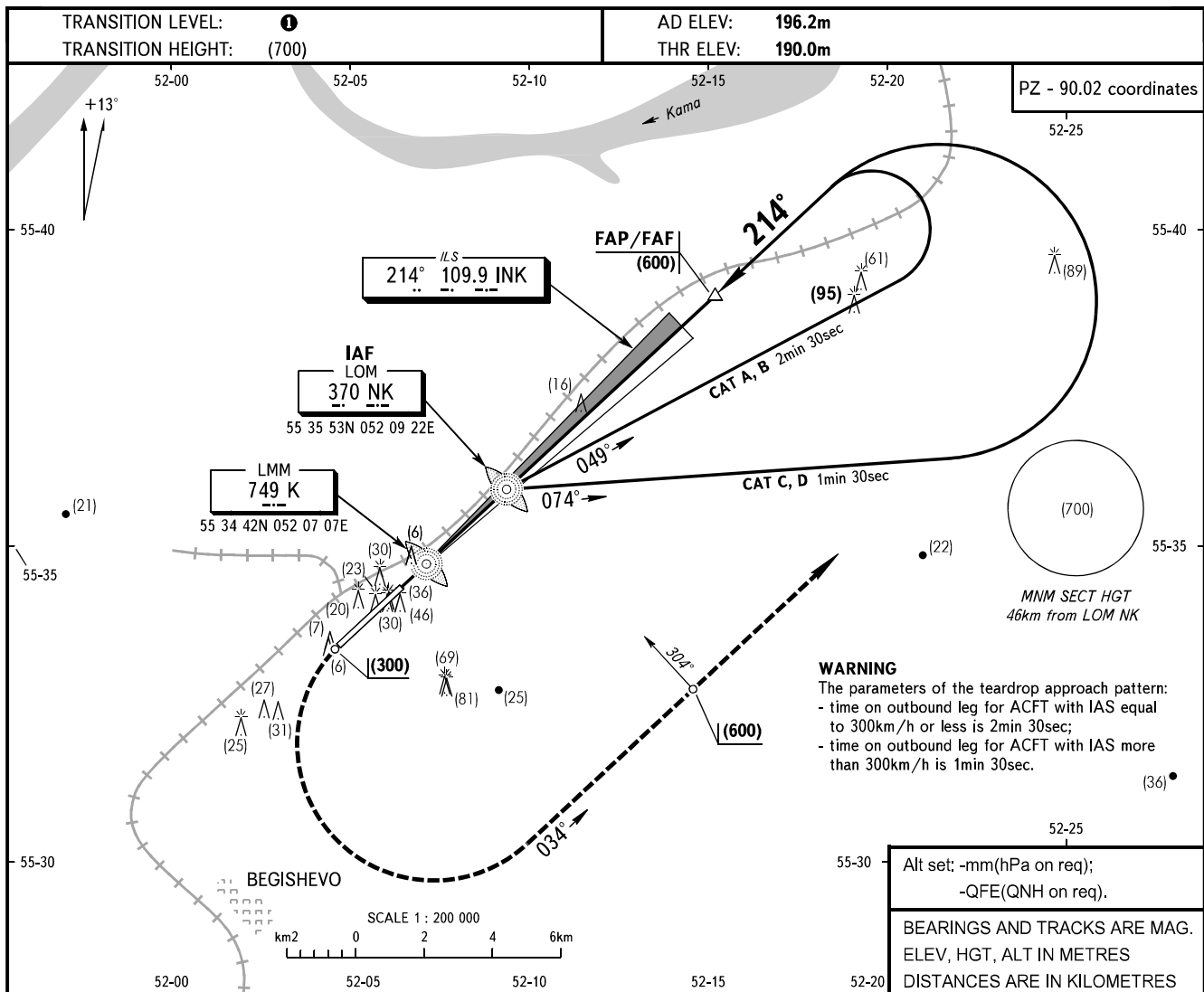


INSTRUMENT  
APPROACH  
CHART - ICAO

RADAR	127.900
TOWER	121.200

BEGISHEVO, RUSSIA  
BEGISHEVO  
ILS, 2 NDB RWY 21



		OCA/H	A	B	C	D							
Straight-in	2 NDB	CAT I	234(44)	237(47)	240(50)	244(54)							
		With FAF	311(121)	311(121)	311(121)	311(121)							
	Approach	WO FAF	460(270)	460(270)	460(270)	460(270)							
		NDB	With FAF	403(213)	403(213)	403(213)	403(213)						
			405(215)	405(215)	405(215)	405(215)							
GROUND SPEED		km/h	150	180	210	240	270	300	330	360	390	420	450
LOM-THR 4200m		min:sec	1.41	1.24	1.12	1.03	0.56	0.50	0.46	0.42	0.39	0.36	0.34
RATE OF DESCENT (Grad 4.7%)		m/s	1.9	2.3	2.7	3.1	3.5	3.9	4.3	4.6	5.0	5.4	5.8

**TRANSITION LEVEL:**  
- FL040 when atmospheric pressure is 742mm mercury column or above;  
- FL050 when atmospheric pressure is 741-715mm mercury column;  
- FL060 when atmospheric pressure is 714mm mercury column or less.

**REMARK**  
FAF is fixed by TAR.