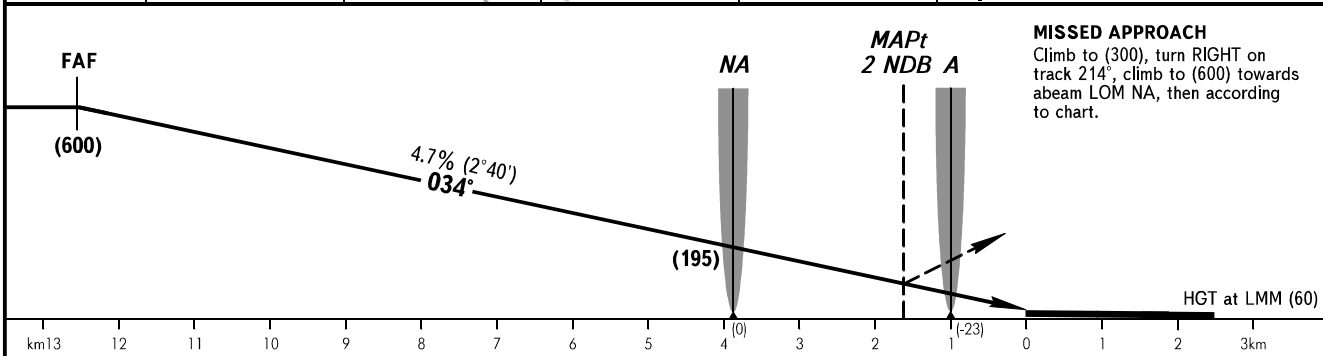
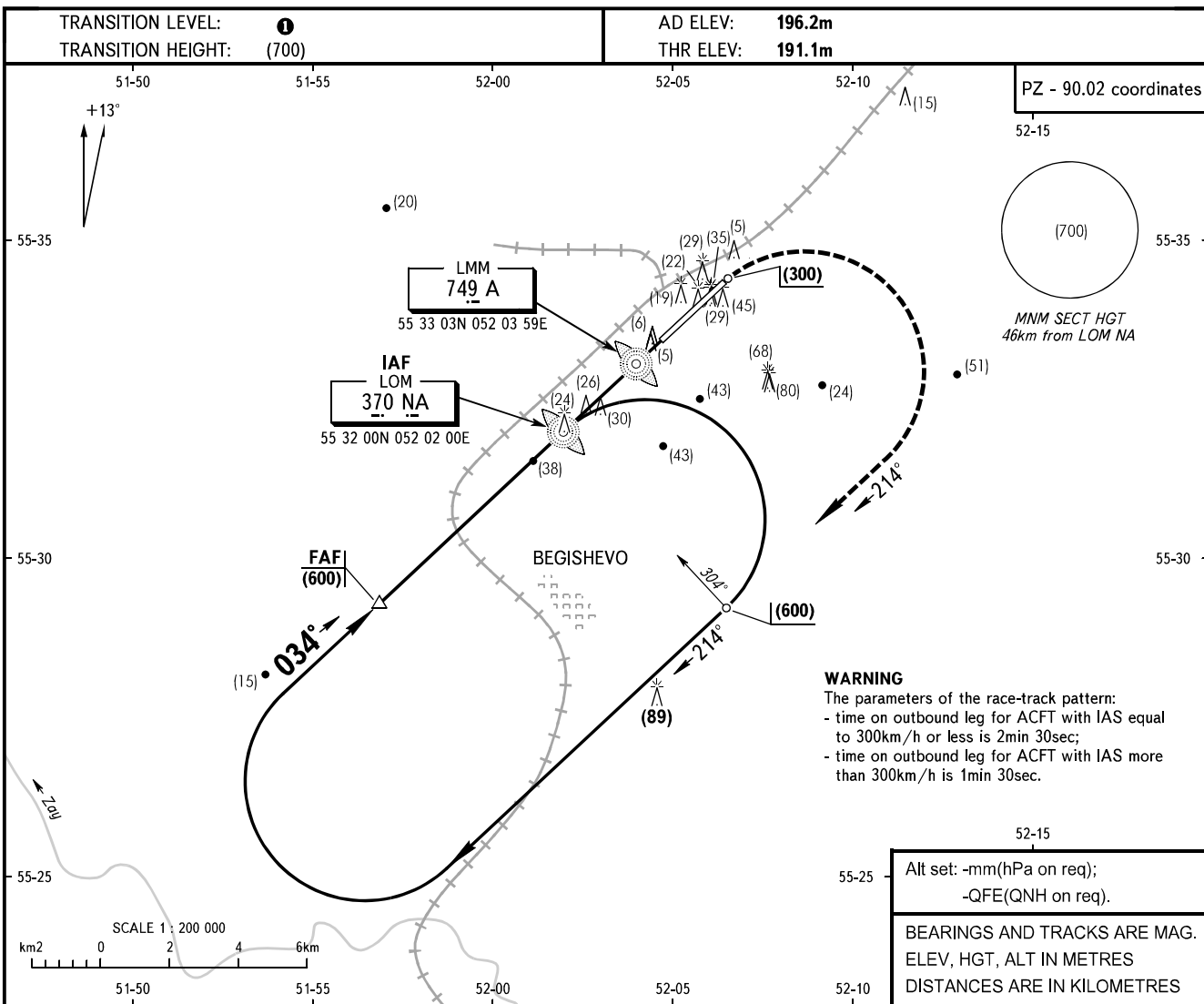


**INSTRUMENT
APPROACH
CHART - ICAO**

RADAR	127.900
TOWER	121.200

**BEGISHEVO, RUSSIA
BEGISHEVO
2 NDB, NDB RWY 03**



Straight-in Approach	OCA/H		A	B	C	D
	2 NDB	With FAF	296(105)	296(105)	296(105)	296(105)
WO FAF		390(199)	390(199)	390(199)	390(199)	390(199)
With FAF		345(154)	345(154)	345(154)	345(154)	345(154)
WO FAF		360(169)	360(169)	360(169)	360(169)	360(169)

1 **TRANSITION LEVEL:**
- FL040 when atmospheric pressure is 742mm mercury column or above;
- FL050 when atmospheric pressure is 741-715mm mercury column;
- FL060 when atmospheric pressure is 714mm mercury column or less.

REMARK
FAF is fixed by TAR.

GROUND SPEED	km/h	150	180	210	240	270	300	330	360	390	420	450
LOM-THR 3875m	min:sec	1.33	1.18	1.07	0.58	0.52	0.47	0.42	0.39	0.36	0.33	0.31
RATE OF DESCENT	m/s	2.2	2.6	3.1	3.5	3.9	4.4	4.8	5.2	5.6	6.0	6.5