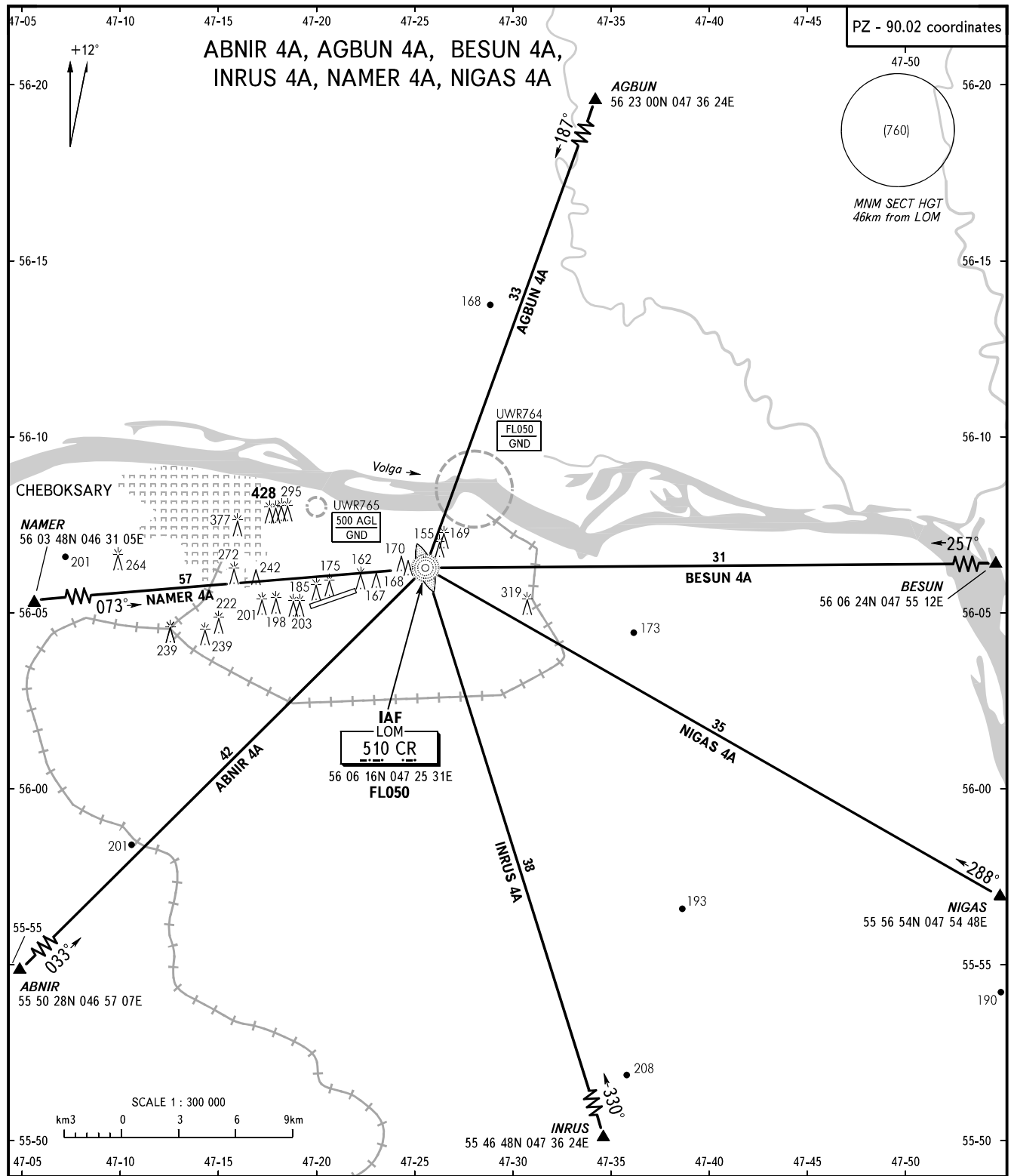


STANDARD ARRIVAL CHART
INSTRUMENT (STAR) - ICAO

CHEBOKSARY, RUSSIA
CHEBOKSARY
RWY 24

TRANSITION
LEVEL: **1**



1 TRANSITION LEVEL:
 - FL050 when atmospheric pressure is 724mm mercury column or above;
 - FL060 when atmospheric pressure is less than 724mm mercury column.

BEARINGS AND TRACKS ARE MAGNETIC
 ALTITUDES, HEIGHTS AND ELEVATIONS ARE IN METRES
 DISTANCES ARE IN KILOMETRES