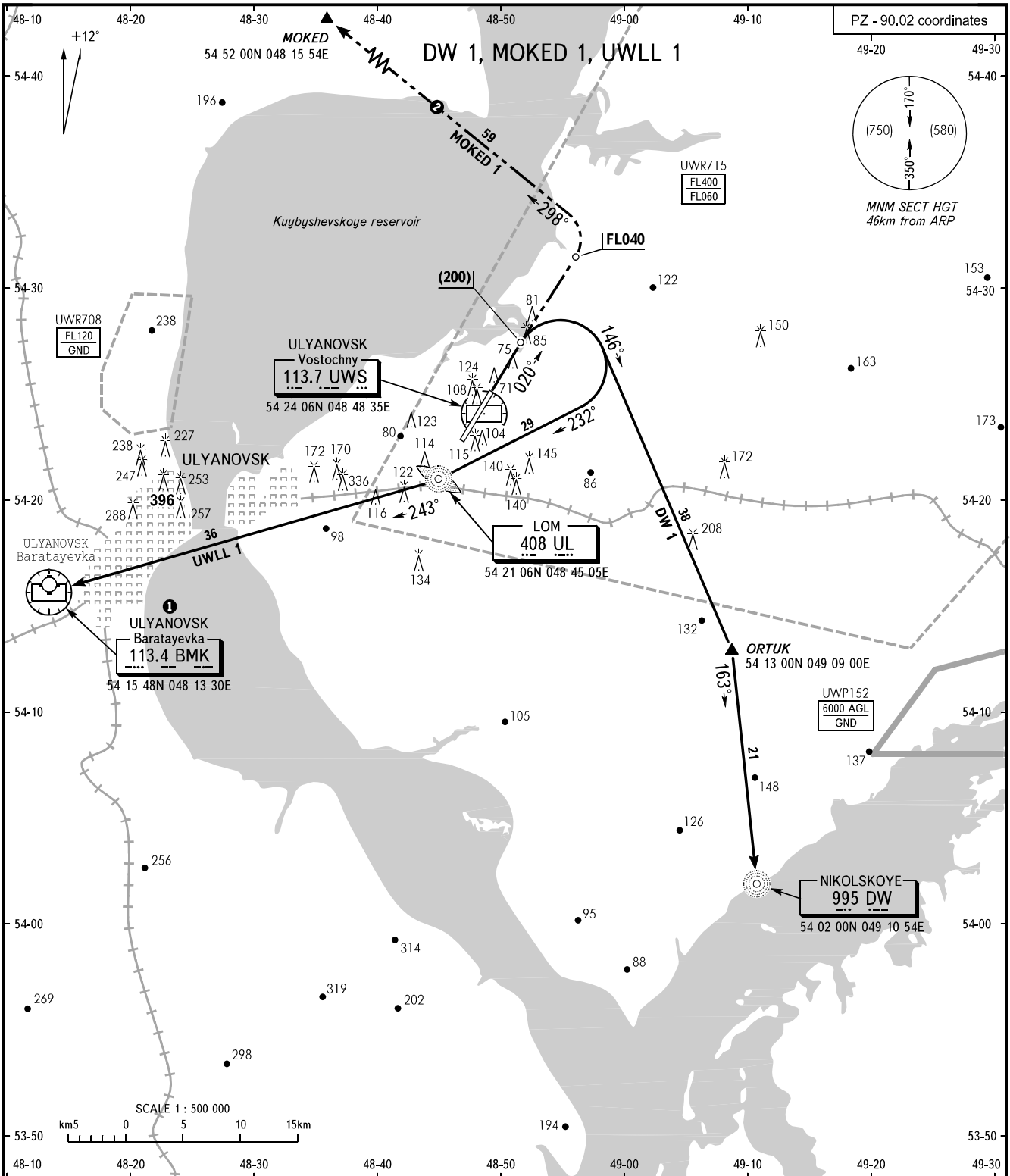


STANDARD DEPARTURE CHART
INSTRUMENT (SID) - ICAO

TRANSITION
HEIGHT : (900)

ULYANOVSK, RUSSIA
VOSTOCHNY
RWY 02



VOSTOCHNY START	124.200
VOSTOCHNY KRUG	124.200
ULYANOVSK APPROACH	127.300

WARNING:
1. FL for crossing VORDME BMK are by coordination with ATC.
2. FL for crossing AWY joining points are as directed by ATC.

② Only for Russian users of airspace.

BEARINGS AND TRACKS ARE MAGNETIC
ALTITUDES, HEIGHTS AND ELEVATIONS ARE IN METRES
DISTANCES ARE IN KILOMETRES

CHANGE: OBST, COORD, VAR