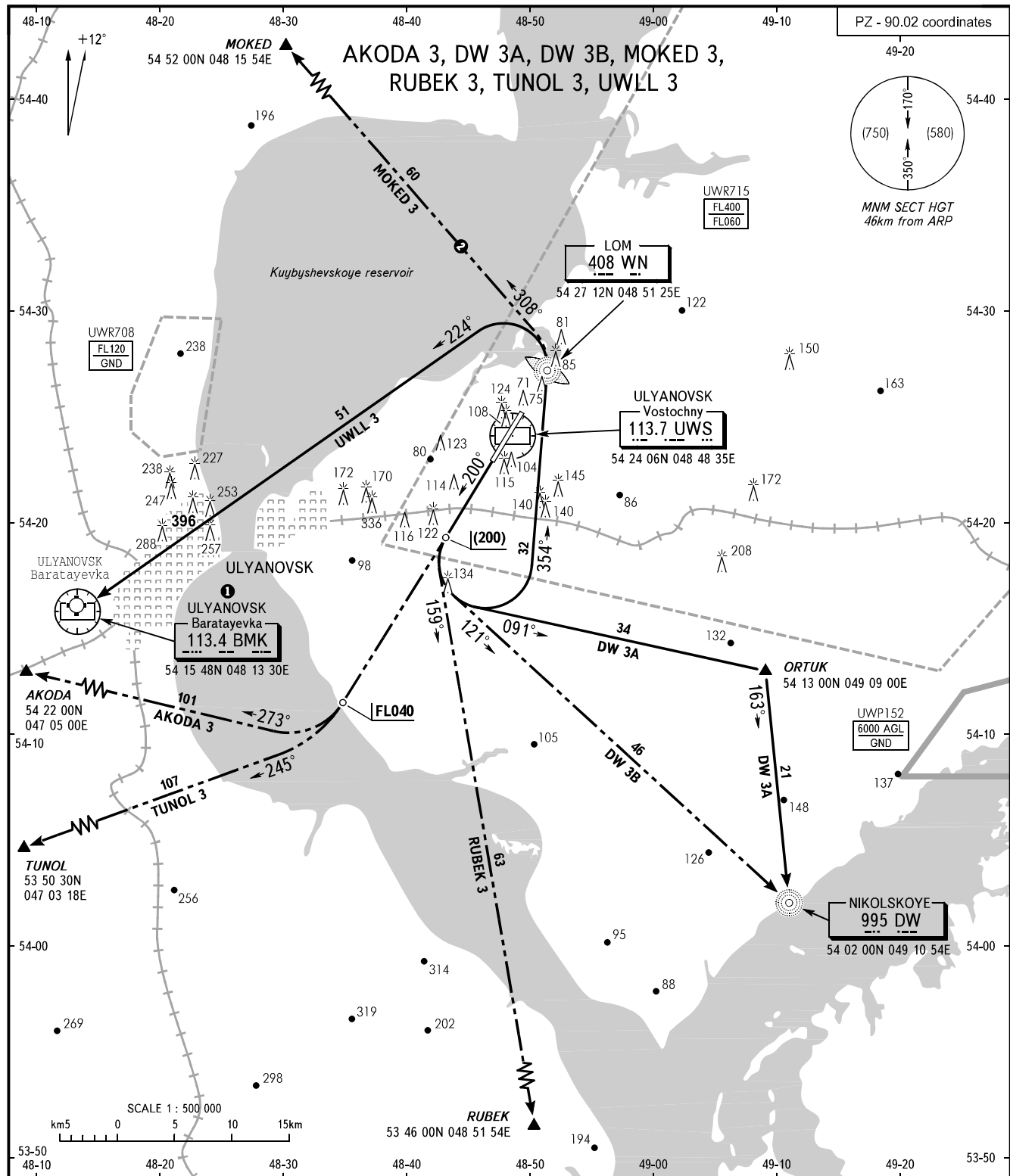


STANDARD DEPARTURE CHART  
INSTRUMENT (SID) - ICAO

TRANSITION  
HEIGHT : (900)

ULYANOVSK, RUSSIA  
VOSTOCHNY  
RWY 20



VOSTOCHNY START 124.200  
VOSTOCHNY KRUG 124.200  
ULYANOVSK APPROACH 127.300

**WARNING:**

1. **1** FL for crossing VORDME BMK are by coordination with ATC.
2. FL for crossing AWY joining points are as directed by ATC.

**2** Only for Russian users of airspace.

BEARINGS AND TRACKS ARE MAGNETIC  
ALTITUDES, HEIGHTS AND ELEVATIONS ARE IN METRES  
DISTANCES ARE IN KILOMETRES