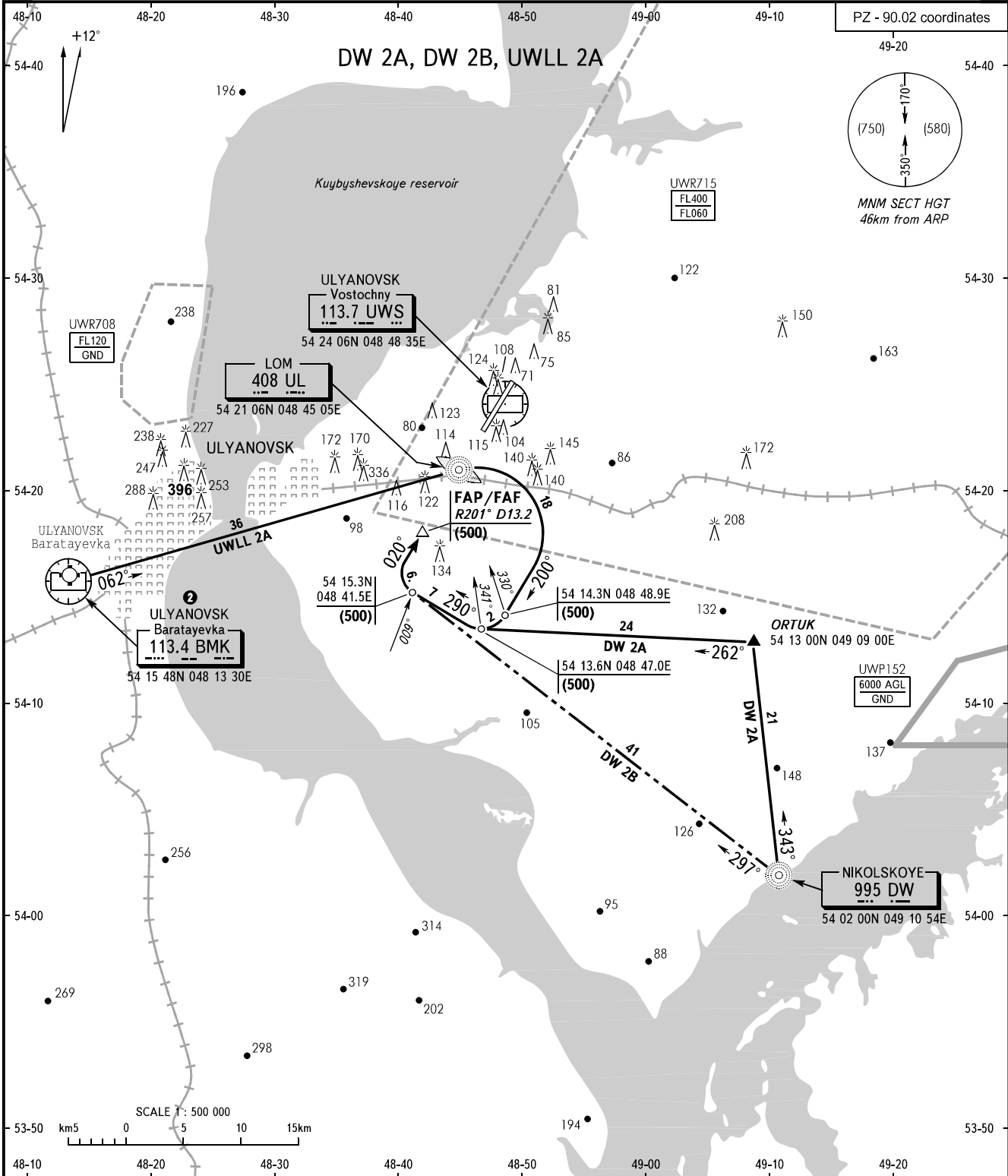


STANDARD ARRIVAL CHART  
INSTRUMENT (STAR) - ICAO

ULYANOVSK, RUSSIA  
VOSTOCHNY  
RWY 02

TRANSITION  
LEVEL: **1**



ULYANOVSK APPROACH 127.300  
VOSTOCHNY KRUG 124.200

- 1** TRANSITION LEVEL:  
- FL050 when atmospheric pressure is 726mm mercury column or above;  
- FL060 when atmospheric pressure is less than 726mm mercury column.

- WARNING:**  
1. **2** FL for crossing VORDME BMK are by coordination with ATC.  
2. FL for crossing points of exit from AWY are as directed by ATC.

BEARINGS AND TRACKS ARE MAGNETIC  
ALTITUDES, HEIGHTS AND ELEVATIONS ARE IN METRES  
DISTANCES ARE IN KILOMETRES