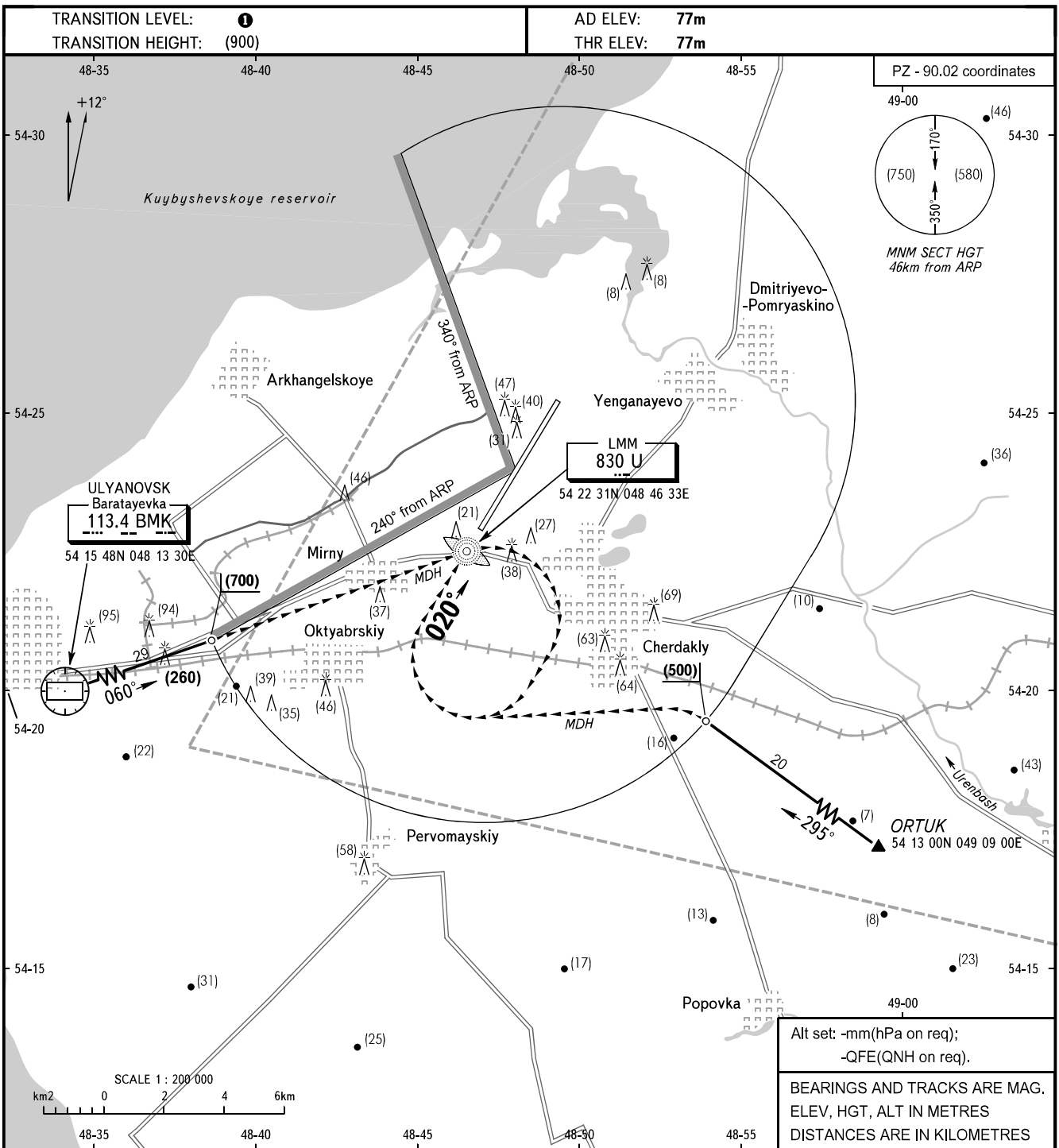


VISUAL
APPROACH
CHART - ICAO

APPROACH	127.300
KRUG	124.200

ULYANOVSK, RUSSIA
VOSTOCHNY
RWY 02



WARNING

If visual reference to RWY is not established or has been lost, pilot-in-command shall coordinate the instrument approach procedure with ATC.

1 **TRANSITION LEVEL:**

- FL050 when atmospheric pressure is 726mm mercury column or above.
- FL060 when atmospheric pressure is less than 726mm mercury column.

ACFT CAT		A	B	C	D
MET conditions	MDH, m	(140)	(150)	(200)	(210)
	Cloud base, m	(500)	(500)	(500)	(500)
	Visibility, m	2000	2500	3000	4000

CHANGE: New chart