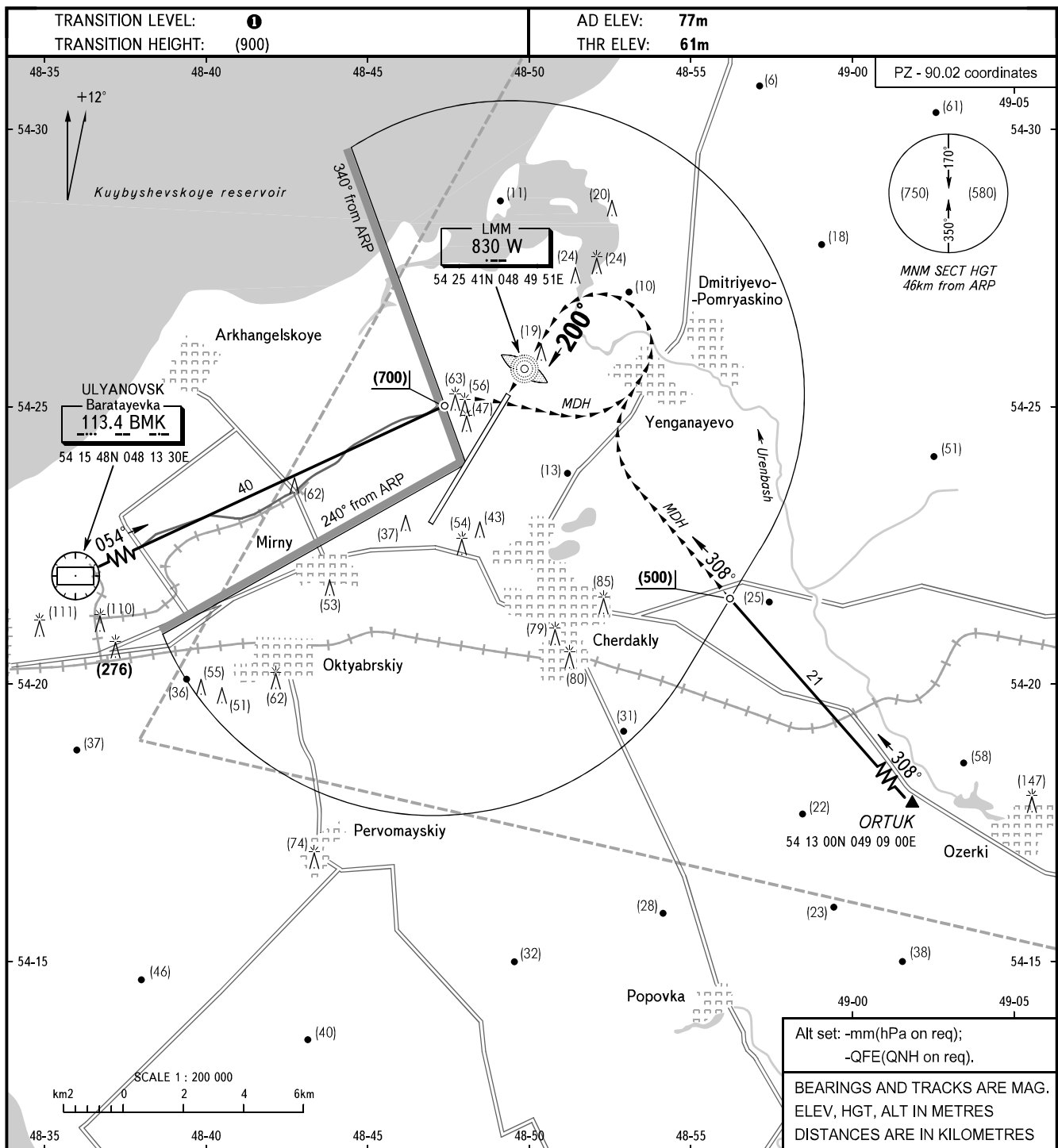


VISUAL
APPROACH
CHART - ICAO

APPROACH **127.300**
KRUG **124.200**

ULYANOVSK, RUSSIA
VOSTOCHNY
RWY 20



Alt set: -mm(hPa on req);
-QFE(QNH on req).
BEARINGS AND TRACKS ARE MAG.
ELEV, HGT, ALT IN METRES
DISTANCES ARE IN KILOMETRES

WARNING

If visual reference to RWY is not established or has been lost, pilot-in-command shall coordinate the instrument approach procedure with ATC.

1 TRANSITION LEVEL:

- FL050 when atmospheric pressure is 726mm mercury column or above.
- FL060 when atmospheric pressure is less than 726mm mercury column.

ACFT CAT		A	B	C	D
MET conditions	MDH, m	(140)	(150)	(200)	(210)
	Cloud base, m	(500)	(500)	(500)	(500)
	Visibility, m	2000	2500	3000	4000