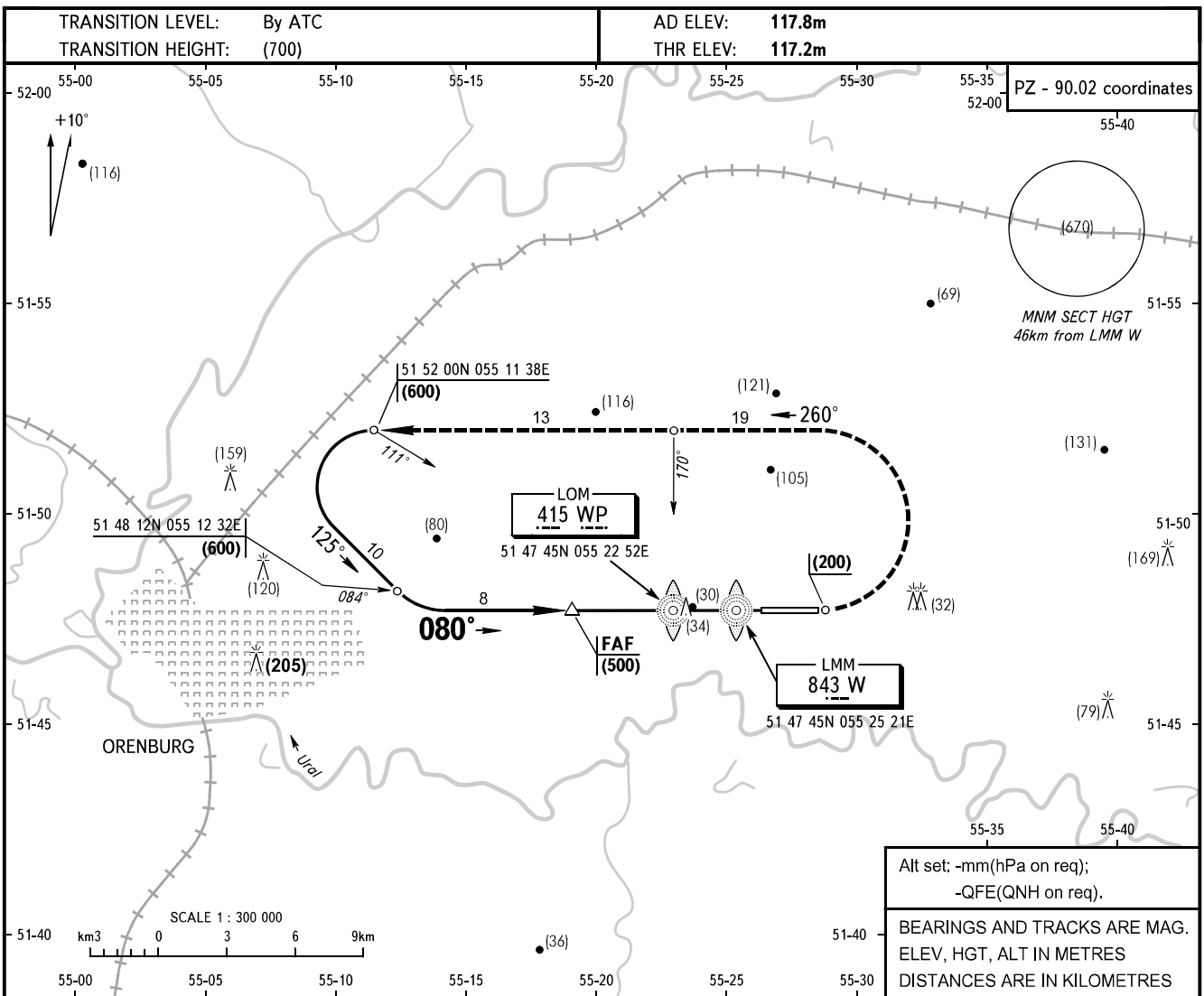


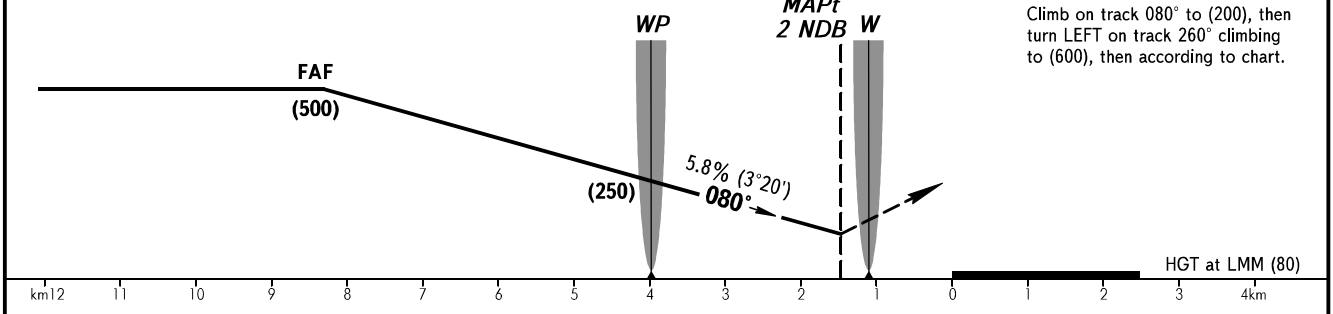
**INSTRUMENT
APPROACH
CHART - ICAO**

TOWER **128.0**

ORENBURG, RUSSIA
ORENBURG
2 NDB RWY 08



FAF is AZM 257° D9.4 by TAR (TAR COORD 51 47 55N 055 27 24E)



OCA/H		A	B	C	D								
Straight-in													
	Approach	2 NDB	WO FAF	477(360)	477(360)	477(360)	477(360)						
With FAF			217(100)	217(100)	217(100)	217(100)							
GROUND SPEED		km/h	150	180	210	240	270	300	330	360	390	420	450
LOM-THR 3970m		min:sec	1.35	1.19	1.08	1.00	0.53	0.48	0.43	0.40	0.37	0.34	0.32
RATE OF DESCENT		m/s	2.4	2.9	3.4	3.9	4.3	4.8	5.3	5.8	6.3	6.7	7.2

CHANGE: COORD, MNM SECT HGT, QDM 170°