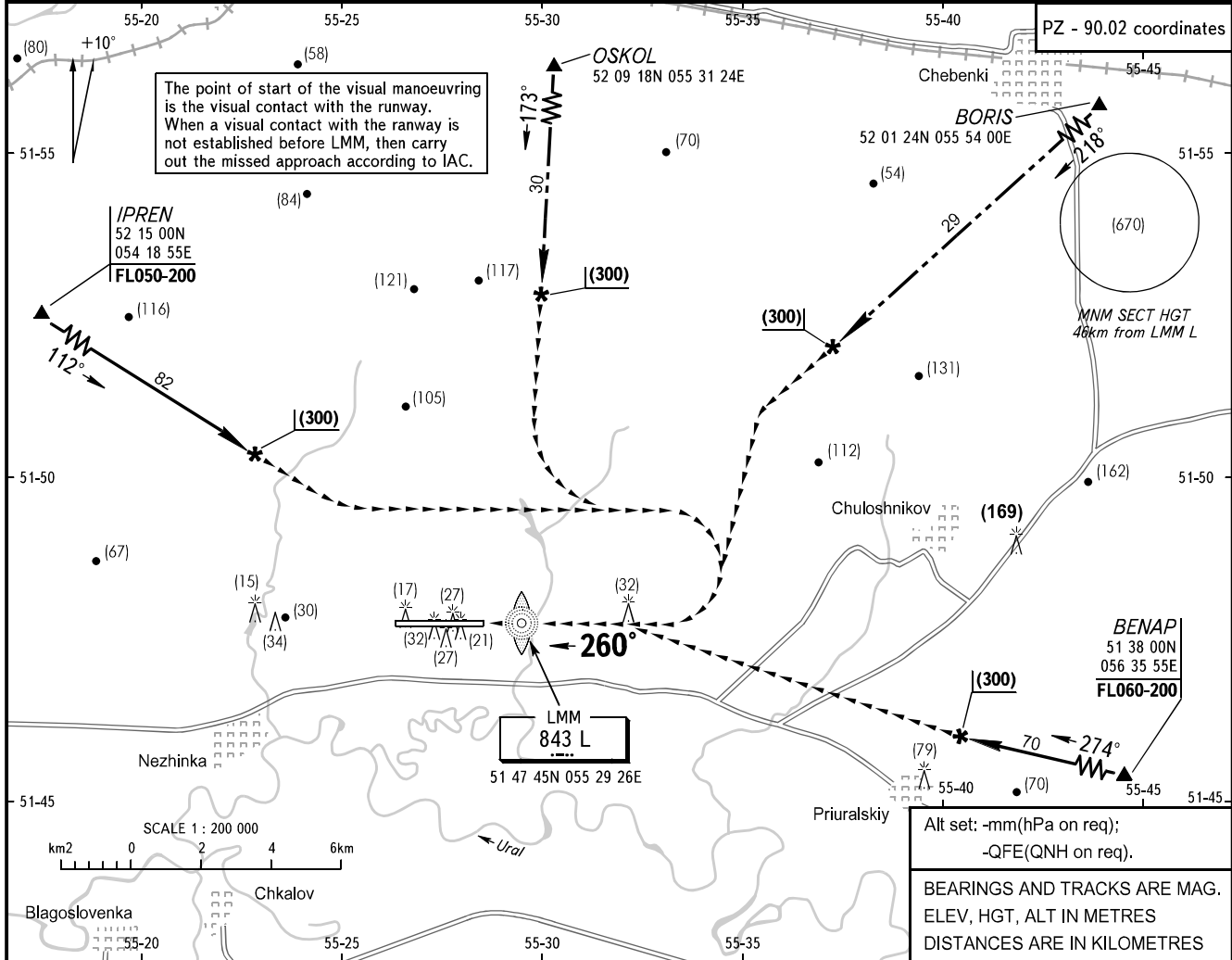


**VISUAL
APPROACH
CHART - ICAO**

TOWER **128.0**

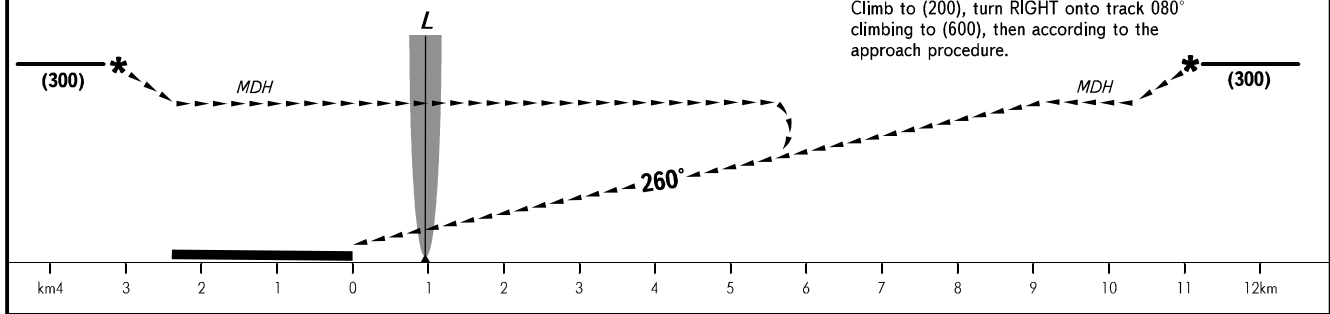
**ORENBURG, RUSSIA
ORENBURG
CIRCLING RWY 26**

TRANSITION LEVEL: By ATC
TRANSITION HEIGHT: (700)
AD ELEV: **117.8**
THR ELEV: **116.9**



Alt set: -mm(hPa on req);
-QFE(QNH on req).

BEARINGS AND TRACKS ARE MAG. ELEV, HGT, ALT IN METRES DISTANCES ARE IN KILOMETRES



MISSED APPROACH
Climb to (200), turn RIGHT onto track 080° climbing to (600), then according to the approach procedure.

OCA/H		A	B	C	D
Visual Manoeuvring (Circling) Area					
ACFT CAT		A	B	C	D
MET conditions	MDH, m	120	180	230	250
	Cloud base, m	350	350	400	400
	① Visibility, m	1600	3000	3000	4000

WARNING:
1. Visual manoeuvring to the south of the aerodrome is prohibited.
2. The height of flight shall not be below (600) to DIST 20km from the aerodrome.

① RVR is 6000 for all CAT ACFT during approach from CRP OSKOL.