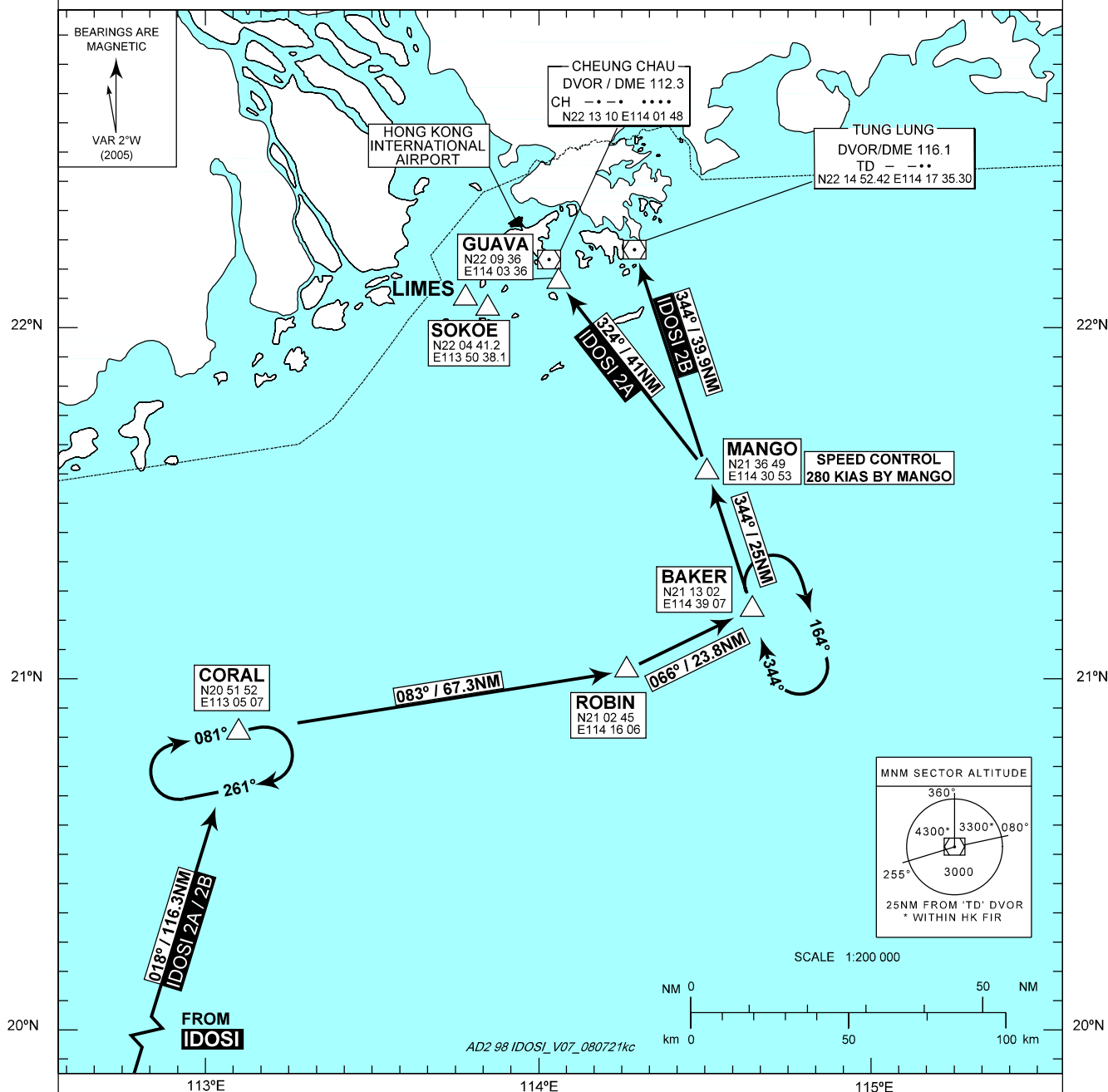


Transition Altitude 9 000 ft  
TMS 126.3

VHHH / HONG KONG INTL  
IDOSI 2A STAR (RWY 07L / 07R)  
IDOSI 2B STAR (RWY 25L / 25R)



## IDOSI 2B STAR RWY 25L / RWY 25R

From IDOSI proceed direct to CORAL and then ROBIN.  
From ROBIN proceed direct to BAKER and then MANGO.  
Track direct from MANGO to 'TD' DVOR. Expect ILS  
approach. Descend as directed by ATC.

**If 'TD' DVOR is not available**

#12500000 not available  
From MANGO proceed direct to reporting point 'TD'.  
Descend as directed by ATC. Expect radar vectors to final  
approach track.

The holding patterns for IDOSI STARs are established at CORAL and/or BAKER. In the event of holding, each flight will be instructed individually.

Pilots should plan to cross ROBIN at F260 and to cross MANGO at F130.  
ACTUAL DESCENT CLEARANCE WILL BE AS DIRECTED BY ATC.

**SPEED CONTROL**  
Aircraft shall fly at 280 KIAS by MANGO.

In the event of a loss of communication aircraft shall comply with the descent planning profile and the STAR track above to maintain F130 to TD/GUAVA as appropriate. Join the relevant holding pattern ('TD' DVOR for RWY 25L/R or SOKOE for RWY07L/R) and descend from F130 to 4 500 ft in the hold, then carry out the appropriate ILS approach procedure.