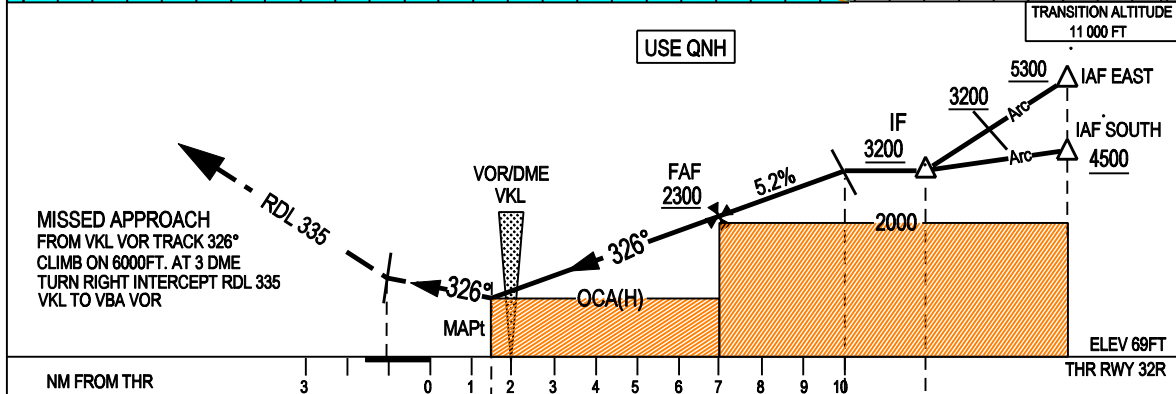
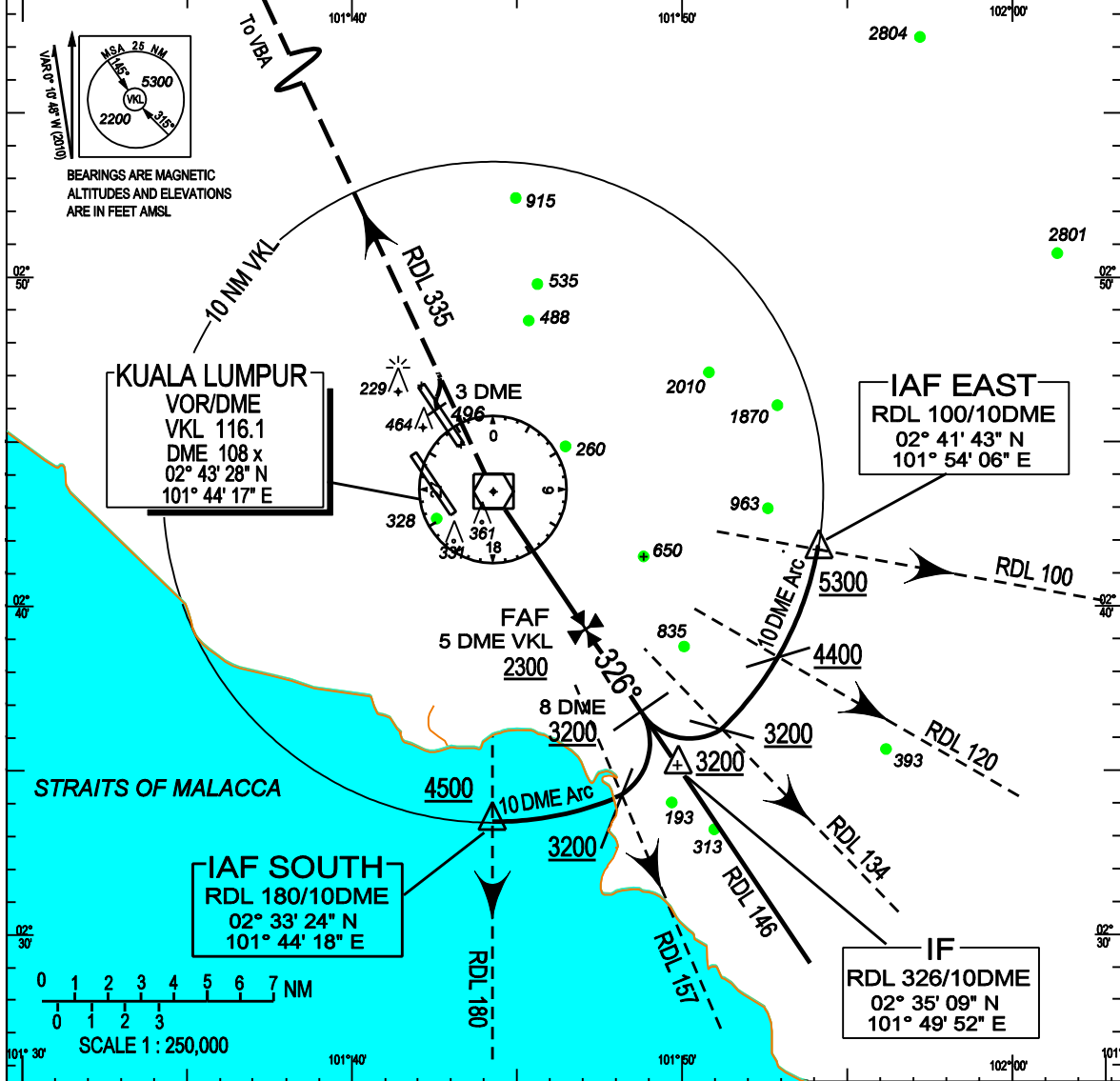


**INSTRUMENT APPROACH
CHART - ICAO**

WMKK AD 2 - 101

AD ELEV 70ft OCH RELATED TO THR RWY 32R - ELEV 69FT	ATIS 126.45		APP N	124.2 MHz	LUMPUR GROUND		SEPANG/KL INTERNATIONAL	
	14L/32R	TWR 118.8	(SECONDARY)	121.25 MHz	APRONS (MN, MS, ME & MW)	122.15	AIRPORT	
		GND 121.65			APRONS (SE & SS)	122.275	VOR/DME	
	14R/32L	TWR 118.5	APP S	119.45 MHz	APRONS (SN & SW)	122.85	RWY 32R	
GND 121.8		(SECONDARY)	125.1 MHz	APRONS (CN, CE, CW)	123.25			
				APRONS (CS)	121.8			



NM FROM THR	3	0	1	2	3	4	5	6	7	8	9	10	THR RWY 32R
NM FROM VKL DME	3	0.5	0	1	2	3	4	5	6	7	8	9	10

OCA (OCH)					ALTITUDE (FT)									
AIRCRAFT CATEGORY	A	B	C	D	3200	2900	2600	2300	1900	1600	1300	1000	660	610
STRAIGHT - IN - APP	610 (541)				8	7	6	5	4	3	2	1	0	0.5
CIRCLING	760 (691)		1260 (1191)			80		110	140	170	200			
						7:17		5:18	4:10	3:25	2:55			
						420		580	740	900	1050			

NOTE : NO CIRCLING PERMITTED WEST OF RWY 14L/32R CENTERLINE, EXCEPT WHEN AUTHORISED BY ATC