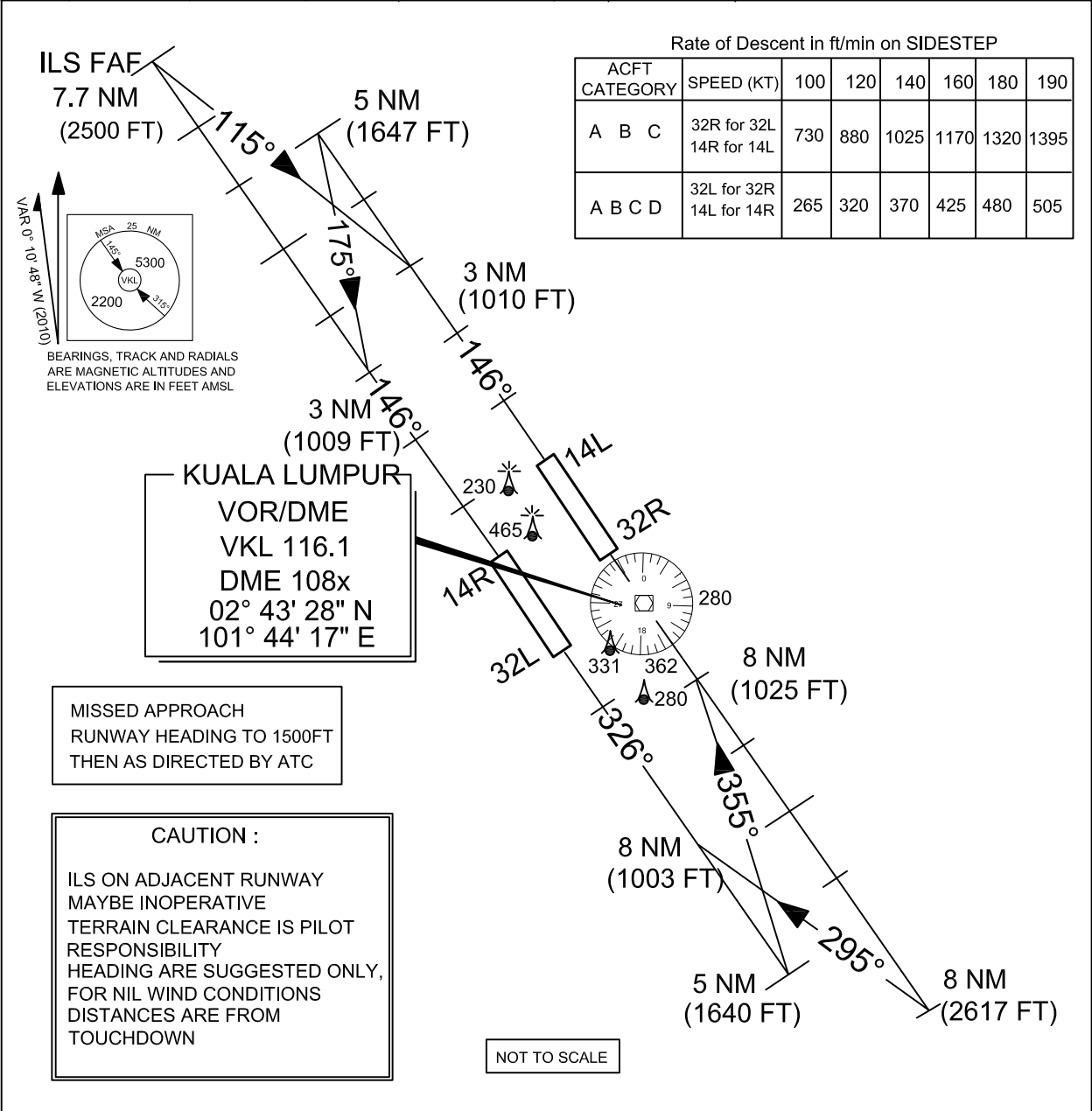


**INSTRUMENT APPROACH
CHART - ICAO**

WMKK AD 2 - 103

ATIS	126.45	APP N	124.2 MHz	LUMPUR GROUND		AD ELEV 70 FT	SEPANG / KL INTERNATIONAL AIRPORT VISUAL SIDE - STEP ALL RUNWAYS
14L/32R	TWR 118.8	(SECONDARY)	121.25MHz	APRONS(MN,MS,ME & MW)	122.15		
	SMC 121.65			APRONS (SE,SS)	122.275		
14R/32L	TWR 118.5	APP S	119.45MHz	APRONS(SN & SW)	122.85		
	SMC 121.8	(SECONDARY)	125.1MHz	APRONS (CN,CE,CW)	123.25		
				APRONS(CS)	121.8		



TRANSITION ALTITUDE
11 000 FT

SIDE - STEP PROCEDURE
LATEST MANOEUVRING FROM ONE RUNWAY TO ADJACENT RUNWAY
VISUAL CONDITIONS BY DAY ONLY
(TERRAIN VISUAL AND IN - FLIGHT VISIBILITY 5000M OR ADJACENT RUNWAY IN SIGHT)

<p>RWY 32L FOR 32 R</p> <ul style="list-style-type: none"> ON ASSIGNMENT OF SIDESTEP - MAKE VISUAL APPROACH (ADVISE ATC IF VISUAL APPROACH NOT POSSIBLE OR IF PROCEDURE NOT ACCEPTABLE) BY 5NM FROM TOUCHDOWN TURN RIGHT FOR ADJACENT RUNWAY DESCENT GRADIENT 2.7% FROM 5NM TO 3 NM (SEE TABLE ABOVE) 	<p>RWY 14L FOR 14 R</p> <ul style="list-style-type: none"> ON ASSIGNMENT OF SIDESTEP - MAKE VISUAL APPROACH (ADVISE ATC IF VISUAL APPROACH NOT POSSIBLE OR IF PROCEDURE NOT ACCEPTABLE) BY 5NM FROM TOUCHDOWN TURN RIGHT FOR ADJACENT RUNWAY DESCENT GRADIENT 2.9% FROM 5NM TO 3NM (SEE TABLE ABOVE)
<p>RWY 32R FOR 32 L (CAT C AND BELOW ONLY)</p> <ul style="list-style-type: none"> ON ASSIGNMENT OF SIDESTEP - MAKE VISUAL APPROACH (ADVISE ATC IF VISUAL APPROACH NOT POSSIBLE OR IF PROCEDURE NOT ACCEPTABLE) BY 8 NM FROM TOUCHDOWN TURN LEFT FOR ADJACENT RUNWAY DESCENT GRADIENT 7.3% FROM 8NM TO 3 NM (SEE TABLE ABOVE) 	<p>RWY 14R FOR 14 L (CAT C AND BELOW ONLY)</p> <ul style="list-style-type: none"> ON ASSIGNMENT OF SIDESTEP - MAKE VISUAL APPROACH (ADVISE ATC IF VISUAL APPROACH NOT POSSIBLE OR IF PROCEDURE NOT ACCEPTABLE) BY 7.7NM FROM TOUCHDOWN TURN LEFT FOR ADJACENT RUNWAY DESCENT GRADIENT 7.3% FROM 7.7NM TO 3NM (SEE TABLE ABOVE)