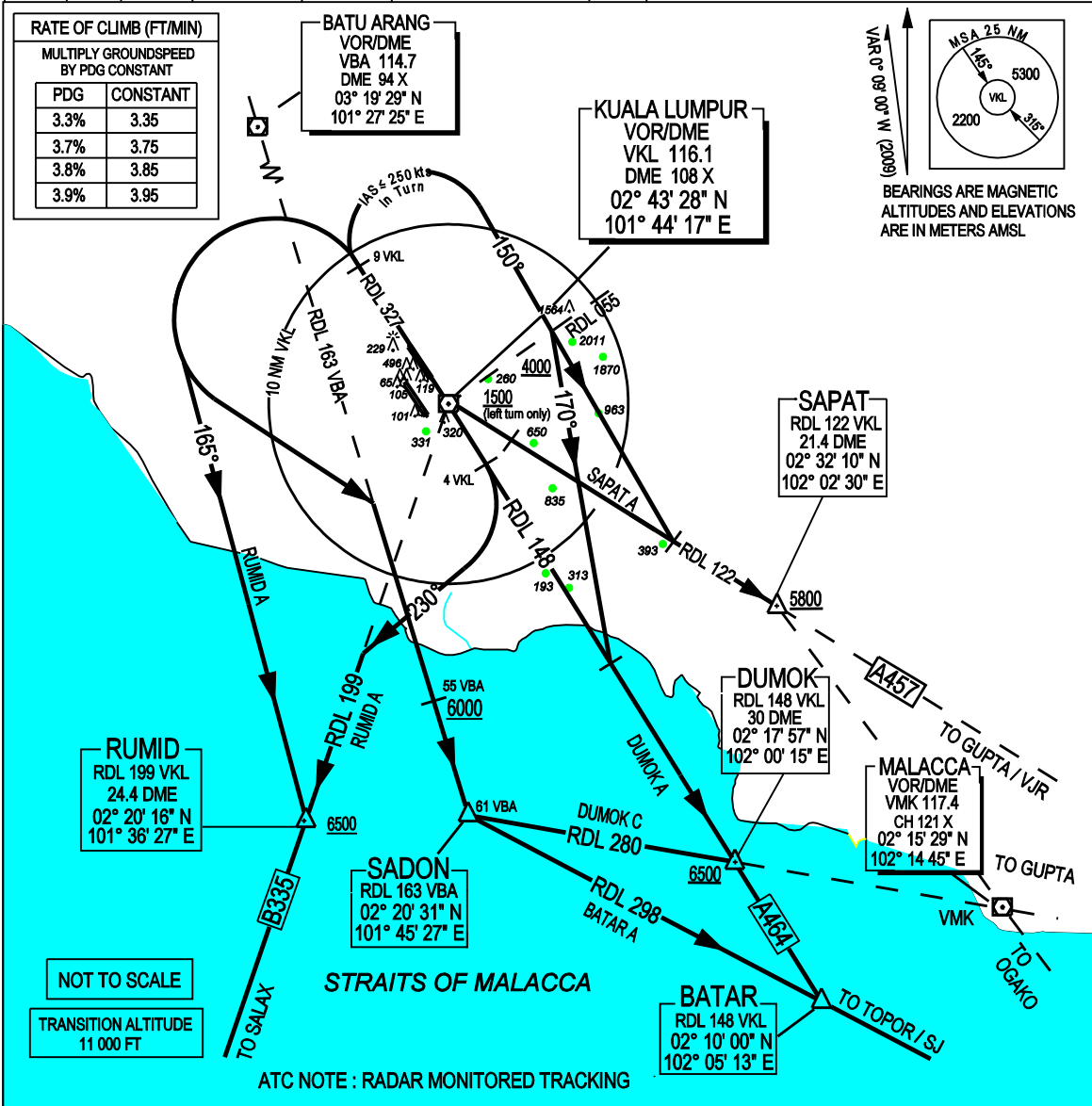


ATIS 126.45		APP N	124.2 MHz	LUMPUR GROUND	
14L/32R	TWR 118.8	(SECONDARY)	121.25 MHz	APRONS (MN, MS, ME & MW)	122.15
	SMC 121.65			APRONS (SE & SS)	122.275
14R/32L	TWR 118.5	APP S	119.45 MHz	APRONS (SN & SW)	122.85
	SMC 121.8	(SECONDARY)	125.1 MHz	APRONS (CN, CE, CW)	123.25
				APRONS (CS)	121.8

SEPANG / KL INTERNATIONAL AIRPORT  
RWY 14L/32R  
DEPARTURES SOUTH



**SAPAT ALPHA DEPARTURE**  
DUMOK ALPHA DEPARTURE  
DUMOK CHARLIE DEPARTURE  
BATAR ALPHA DEPARTURE  
RUMID ALPHA DEPARTURE

**RWY 14L - CONTACT APP S AFTER AIRBORNE**  
• PDG: FOR SAPAT: 3.8% TO 6400FT - CTA  
FOR RUMID: 3.7% TO 6700FT - CTA  
• TRACK 146° TO VKL VOR, THENCE RDL 140 FROM VKL VOR

**FOR SAPAT A**  
• AT VKL VOR OR 1500FT, WHICHEVER IS LATER, TURN LEFT  
• INTERCEPT RDL 122 VKL VOR OUTBOUND TO SAPAT

**FOR DUMOK A**  
• AT 4 DME VKL VOR TURN RIGHT  
• INTERCEPT RDL 148 VKL VOR OUTBOUND TO DUMOK

**FOR DUMOK C**  
• TURN LEFT TO INTERCEPT RDL 163 OUTBOUND FROM VBA VOR  
• AT SADON TURN LEFT, TRACK RDL 280 VMK VOR INBOUND TO DUMOK

**FOR BATAR A**  
• TURN LEFT TO INTERCEPT RDL 163 OUTBOUND FROM VBA VOR  
• AT SADON TURN LEFT, TRACK RDL 298 SJ VOR INBOUND TO BATAR

**FOR RUMID A**  
• AT 4 DME VKL VOR TURN RIGHT, TRACK 230°  
• INTERCEPT RDL 199 VKL VOR OUTBOUND TO RUMID

**RWY 32R - CONTACT APP N AFTER AIRBORNE**  
• PDG: TURNING RIGHT: 3.9% TO 3400FT - OBSTACLE/TRAFFIC  
• TRACK RDL 327 FROM VKL VOR  
• AT 9 DME VKL TURN RIGHT OR LEFT AS APPROPRIATE

**FOR SAPAT A**  
• TRACK 150° TO INTERCEPT RDL 122 VKL VOR OUTBOUND TO SAPAT

**FOR DUMOK A**  
• TRACK 150°  
• CROSSING RDL 055 VKL TURN RIGHT, TRACK 170°  
• INTERCEPT RDL 148 VKL VOR OUTBOUND TO DUMOK

**FOR DUMOK C**  
• TURN LEFT TO INTERCEPT RDL 163 OUTBOUND FROM VBA VOR  
• AT SADON TURN LEFT, TRACK RDL 280 VMK VOR INBOUND TO DUMOK

**FOR BATAR A**  
• TURN LEFT TO INTERCEPT RDL 163 OUTBOUND FROM VBA VOR  
• AT SADON TURN LEFT, TRACK RDL 298 SJ VOR INBOUND TO BATAR

**FOR RUMID A**  
• TRACK 165° TO INTERCEPT RDL 199 VKL VOR OUTBOUND TO RUMID

**VERTICAL RESTRICTIONS:**  
ADHERE TO VERTICAL RESTRICTIONS eg. 1500 FT = NOT BELOW 1500 FT ON CLIMB UNLESS SPECIFICALLY CANCELLED BY ATC.

**CAUTION:**  
• CLIMB TO INITIAL ALTITUDE 6000 FT  
• CONTACT "LUMPUR APPROACH S" NOT LATER THAN 2000 FT AFTER AIRBORNE  
• REPORT: - ASSIGNED SID - ALTITUDE PASSING TO THE NEAREST 100 FT - INITIAL ALTITUDE CLIMBING TO.