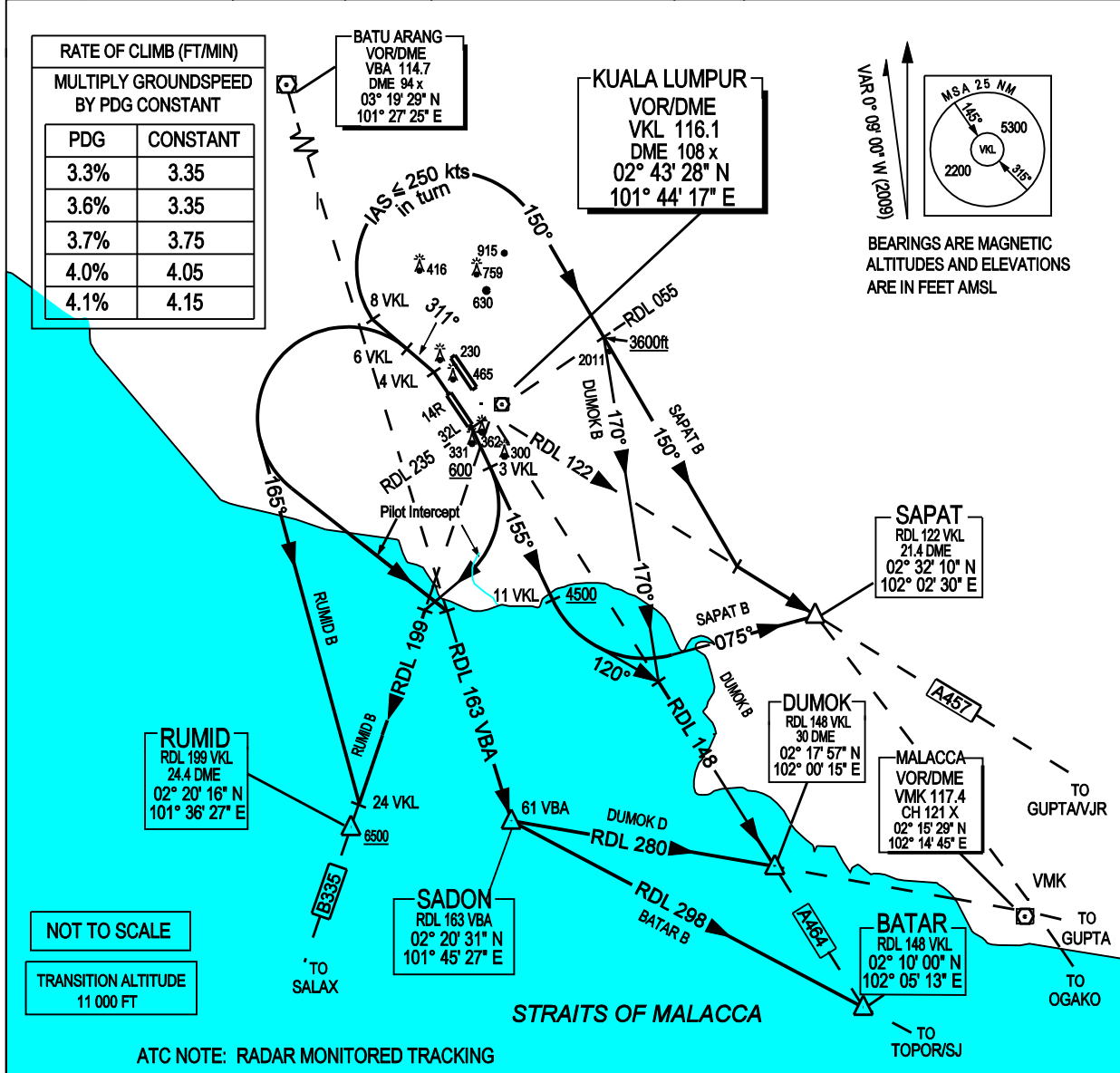


ATIS		126.45	APP N	124.2 MHz	LUMPUR GROUND		SELANG / KL INTERNATIONAL AIRPORT RWY 14R/32L DEPARTURES SOUTH
14L/32R	TWR	118.8	(SECONDARY)	121.25 MHz	APRONS (MN, MS, ME & MW)	122.15	
	SMC	121.65			APRONS (SE & SS)	122.275	
14R/32L	TWR	118.5	APP S	119.45 MHz	APRONS (SN & SW)	122.85	
	SMC	121.8	(SECONDARY)	125.1 MHz	APRONS (CN, CE, CW)	123.25	
					APRONS (CS)	121.8	



**ATC NOTE: RADAR MONITORED TRACKING**

**SAPAT BRAVO DEPARTURE**  
DUMOK BRAVO DEPARTURE  
DUMOK DELTA DEPARTURE

**RUMID BRAVO DEPARTURE**  
BATAR BRAVO DEPARTURE

RWY 14R - CONTACT APP S AFTER AIRBORNE.

- PDG: FOR SAPAT: 4.0% TO 6600 FT - CTA  
FOR DUMOK: 3.7% TO 2800 FT - CTA  
FOR RUMID: 4.1% TO 6800 FT - CTA
- TRACK 146°
- ABEAM VKL VOR (RDL 235) TURN RIGHT, TRACK 155°

**FOR SAPAT B**

- AT 11 DME VKL OR 4500 FT, WHICHEVER IS EARLIER, TURN LEFT
- TRACK 075° TO INTERCEPT RDL 122 VKL VOR OUTBOUND TO SAPAT

**FOR DUMOK B**

- AT 11 DME VKL OR 4500 FT, WHICHEVER IS EARLIER, TURN LEFT
- TRACK 120° TO INTERCEPT RDL 148 VKL VOR OUTBOUND TO DUMOK

**FOR RUMID B**

- AFTER CROSSING RDL 236 VKL, BY 3 DME VKL NOT BELOW 600 FT, TURN RIGHT
- INTERCEPT RDL 199 VKL VOR OUTBOUND TO RUMID

**RWY 32L - CONTACT APP N AFTER AIRBORNE.**

- PDG: TURNING RIGHT: 3.8% TO 1800 FT - TRAFFIC  
TURNING LEFT FOR RUMID & DUMOK: 3.6% TO 8500 FT - CTA
- TRACK 326° TO 4 DME VKL, THENCE TURN LEFT, TRACK 311°  
**FOR SAPAT B**
- AT 8 DME VKL TURN RIGHT
- TRACK 150° TO INTERCEPT RDL 122 VKL VOR OUTBOUND TO SAPAT  
**FOR DUMOK B**
- AT 8 DME VKL TURN RIGHT (TURN IAS < 250 KNOTS)
- TRACK 150°
- CROSSING RDL 055 VKL TURN RIGHT, TRACK 170°
- INTERCEPT RDL 148 VKL VOR OUTBOUND TO DUMOK  
**FOR DUMOK D**
- AT 6 DME VKL TURN LEFT TO INTERCEPT RDL 163 OUTBOUND FROM VBA VOR
- AT SADON TURN LEFT, TRACK RDL 280 VMK VOR INBOUND TO DUMOK  
**FOR BATAR B**
- AT 6 DME VKL TURN LEFT TO INTERCEPT RDL 163 OUTBOUND FROM VBA VOR
- AT SADON TURN LEFT, TRACK RDL 298 SJ VOR INBOUND TO BATAR  
**FOR RUMID B**
- AT 6 DME VKL TURN LEFT
- TRACK 165° TO INTERCEPT RDL 199 VKL VOR OUTBOUND TO RUMID

**VERTICAL RESTRICTIONS:**  
ADHERE TO VERTICAL RESTRICTIONS eg. 1500 FT  
= NOT BELOW 1500 FT ON CLIMB UNLESS SPECIFICALLY CANCELLED BY ATC.

**CAUTION:** - CLIMB TO INITIAL ALTITUDE 6000 FT - CONTACT "LUMPUR APPROACH S" NOT LATER THAN 2000 FT AFTER AIRBORNE  
REPORT: - ASSIGNED SID - ALTITUDE PASSING TO THE NEAREST 100 FT  
- INITIAL ALTITUDE CLIMBING TO.