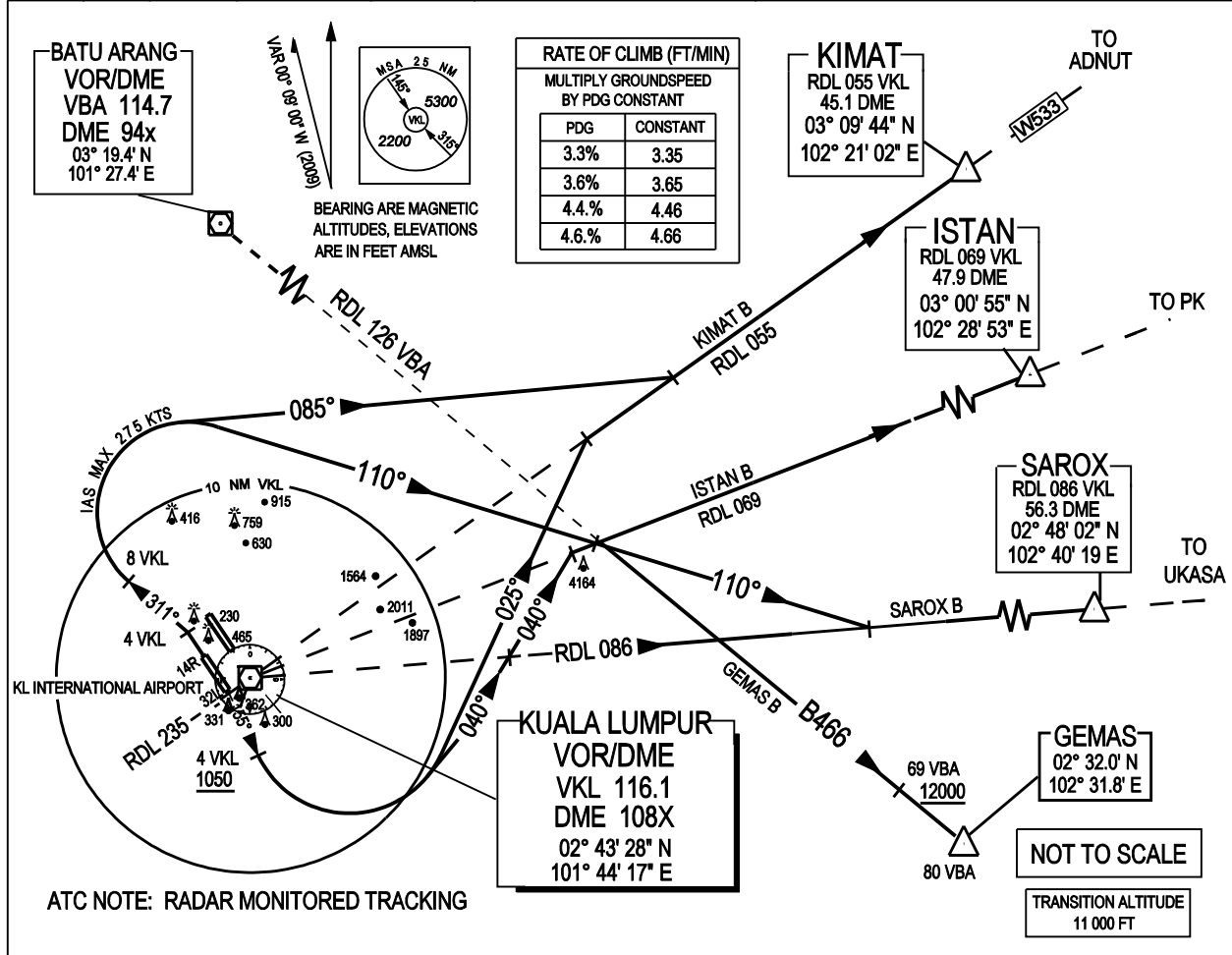


ATIS		126.45	APP N	124.2 MHz	LUMPUR GROUND		SEPANG / KL INTERNATIONAL AIRPORT	
14L/32R	TWR	118.8	(SECONDARY)	121.25 MHz	APRONS (MN, MS, ME & MW)	122.15	RWY 14R / 32L	
	SMC	121.65			APRONS (SE & SS)	122.275	DEPARTURES EAST	
14R/32L	TWR	118.5	APP S	119.45 MHz	APRONS (SN & SW)	122.85		
	SMC	121.8	(SECONDARY)	125.1 MHz	APRONS (CN, CE, CW)	123.25		
					APRONS (CS)	121.8		



KIMAT BRAVO DEPARTURE **SAROX BRAVO DEPARTURE**
ISTAN BRAVO DEPARTURE **GEMAS BRAVO DEPARTURE**

RWY 14R - CONTACT APP S AFTER AIRBORNE

- PDG- FOR KIMAT B: 4.6% TO 3100 FT - OBSTACLE/TRAFFIC/CTA
- FOR ISTAN B: 4.4% TO 3200 FT - OBSTACLES /TRAFFIC /CTA
- FOR SAROX B: 4.3% TO 3800 FT - OBSTACLES /TRAFFIC /CTA
- TRACK 146°
- ABEAM VKL VOR (RDL 235) TURN RIGHT, TRACK 155°
- AT 4 DME VKL, NOT BELOW 1050 FT TURN LEFT

FOR KIMAT B

- TRACK 025°
- INTERCEPT RDL 055 OUTBOUND FROM VKL VOR TO KIMAT

FOR ISTAN B

- Track 040°
- INTERCEPT RDL 069 OUTBOUND FROM VKL VOR TO ISTAN

FOR SAROX B

- TRACK 040°
- INTERCEPT RDL 086 OUTBOUND FROM VKL VOR TO SAROX

RWY 32L - CONTACT APP N AFTER AIRBORNE

- PDG: FOR KIMAT B, ISTAN B & SAROX B: 3.6% TO 1800FT - OBSTACLE/TRAFFIC/CTA
- FOR GEMAS: 4.4% TO 1500 FT - OBSTACLES /TRAFFIC /CTA
- IAS IN INITIAL TURN - MAXIMUM 275 KTS
- TRACK 326°
- AT 4 DME VKL TURN LEFT, TRACK 311°
- AT 8 DME VKL, TURN RIGHT

FOR KIMAT B

- TRACK 085°
- INTERCEPT RDL 055 OUTBOUND FROM VKL VOR TO KIMAT

FOR ISTAN B

- TRACK 110°
- INTERCEPT RDL 069 OUTBOUND FROM VKL VOR TO ISTAN

FOR SAROX B

- TRACK 110°
- INTERCEPT RDL 086 OUTBOUND FROM VKL VOR TO SAROX

FOR GEMAS B

- TRACK 110°
- INTERCEPT RDL 126 OUTBOUND FROM VKL VOR TO GEMAS
- CROSS 69 DME VBA NOT BELOW 12000 FT

CAUTION : - CLIMB TO INITIAL ALTITUDE 6000 FT. - CONTACT " LUMPUR APPROACH" NOT LATER THAN 2000 FT AFTER AIRBORNE ;
- REPORT : - ASSIGNED SID - ALTITUDE PASSING TO THE NEAREST 100 FT - INITIAL ALTITUDE CLIMBING TO.

VERTICAL RESTRICTIONS:
ADHERE TO VERTICAL RESTRICTIONS eg. 1500 FT = NOT BELOW 1500 FT ON CLIMB UNLESS SPECIFICALLY CANCELLED BY ATC.