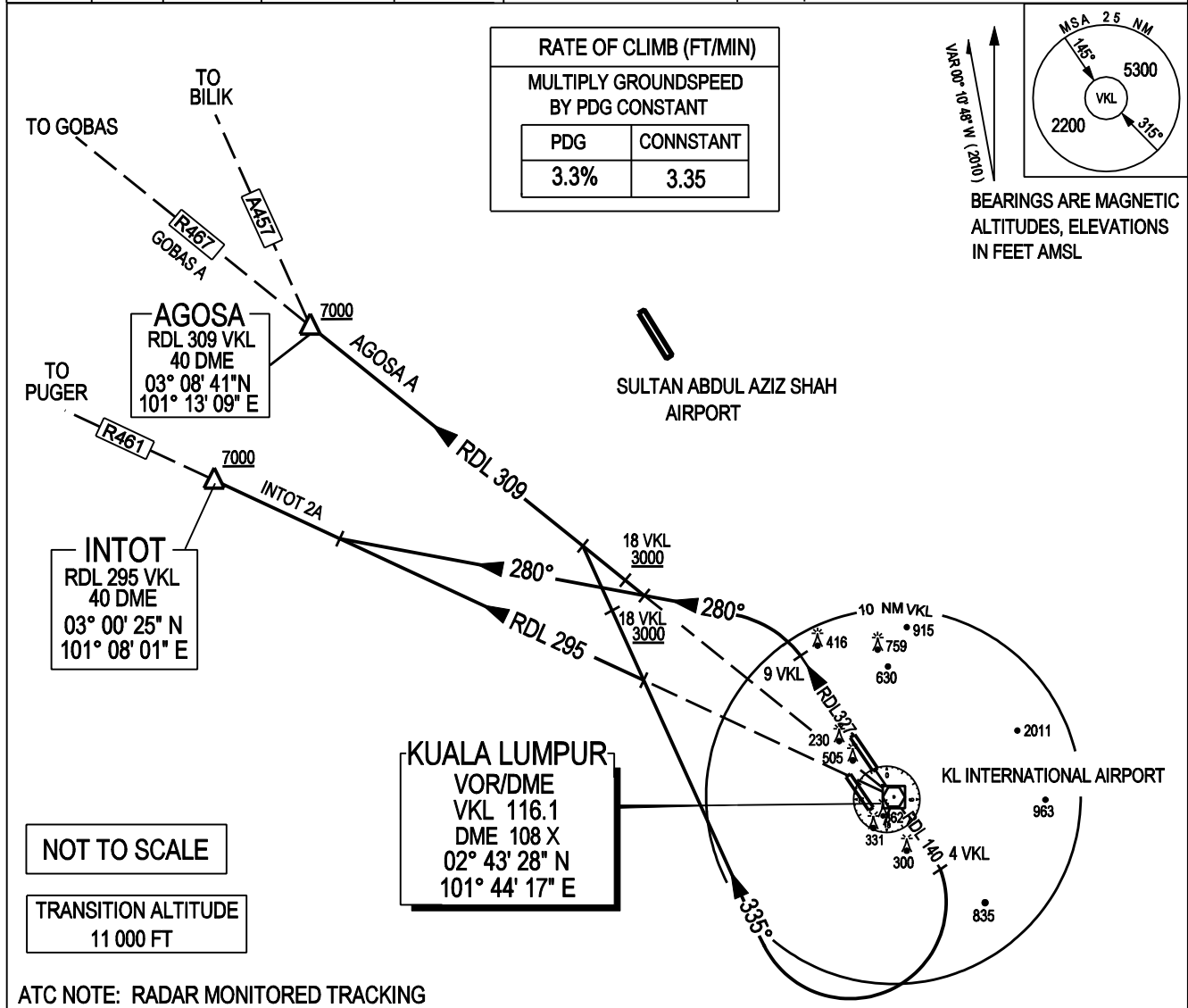


STANDARD DEPARTURE CHART INSTRUMENT
(SID) - ICAO

WMKK AD 2 - 58

ATIS		126.45	APP N	124.2 MHZ	LUMPUR GROUND		SEPANG / KL INTERNATIONAL AIRPORT RWY 14L/32R DEPARTURES NORTH - WEST
14L/32R	TWR	118.8	(SECONDARY)	121.25 MHZ	APRONS (MN, MS, ME & MW)	122.15	
	GND	121.65			APRONS (SE & SS)	122.275	
14R/32L	TWR	118.5	APP S	119.45 MHZ	APRONS (SN & SW)	122.85	
	GND	121.8	(SECONDARY)	125.1 MHZ	APRONS (CN, CE, CW)	123.25	
					APRONS (CS)	121.8	



INTOT TWO ALPHA DEPARTURE, AGOSA ALPHA DEPARTURE

RWY 14L - CONTACT APP S AFTER AIRBORNE
TRACK 146° TO VKL VOR,
THENCE TRACK RDL 140 FROM VKL VOR
AT 4 DME VKL TURN RIGHT
TRACK 335°

FOR INTOT 2A
INTERCEPT RDL 295 VKL VOR OUTBOUND TO INTOT

FOR AGOSA A
INTERCEPT RDL 309 VKL VOR OUTBOUND TO AGOSA

RWY 32R - CONTACT APP N AFTER AIRBORNE
TRACK RDL 327 FROM VKL VOR
AT 9 DME VKL TURN LEFT
TRACK 280°

FOR INTOT 2A
INTERCEPT RDL 295 VKL VOR OUTBOUND TO INTOT

FOR AGOSA A
INTERCEPT RDL 309 VKL VOR OUTBOUND TO AGOSA

CAUTION : CLIMB TO INITIAL ALTITUDE 6000 FT. CONTACT "LUMPUR APPROACH" NOT LATER THAN 2000 FT AFTER AIRBORNE.
REPORT : ASSIGNED SID - ALTITUDE PASSING TO THE NEAREST 100 FT - INITIAL ALTITUDE CLIMBING TO.

VERTICAL RESTRICTIONS :
ADHERE TO VERTICAL RESTRICTIONS eg. 1500 FT = NOT BELOW 1500 FT ON CLIMB UNLESS SPECIFICALLY CANCELLED BY ATC.