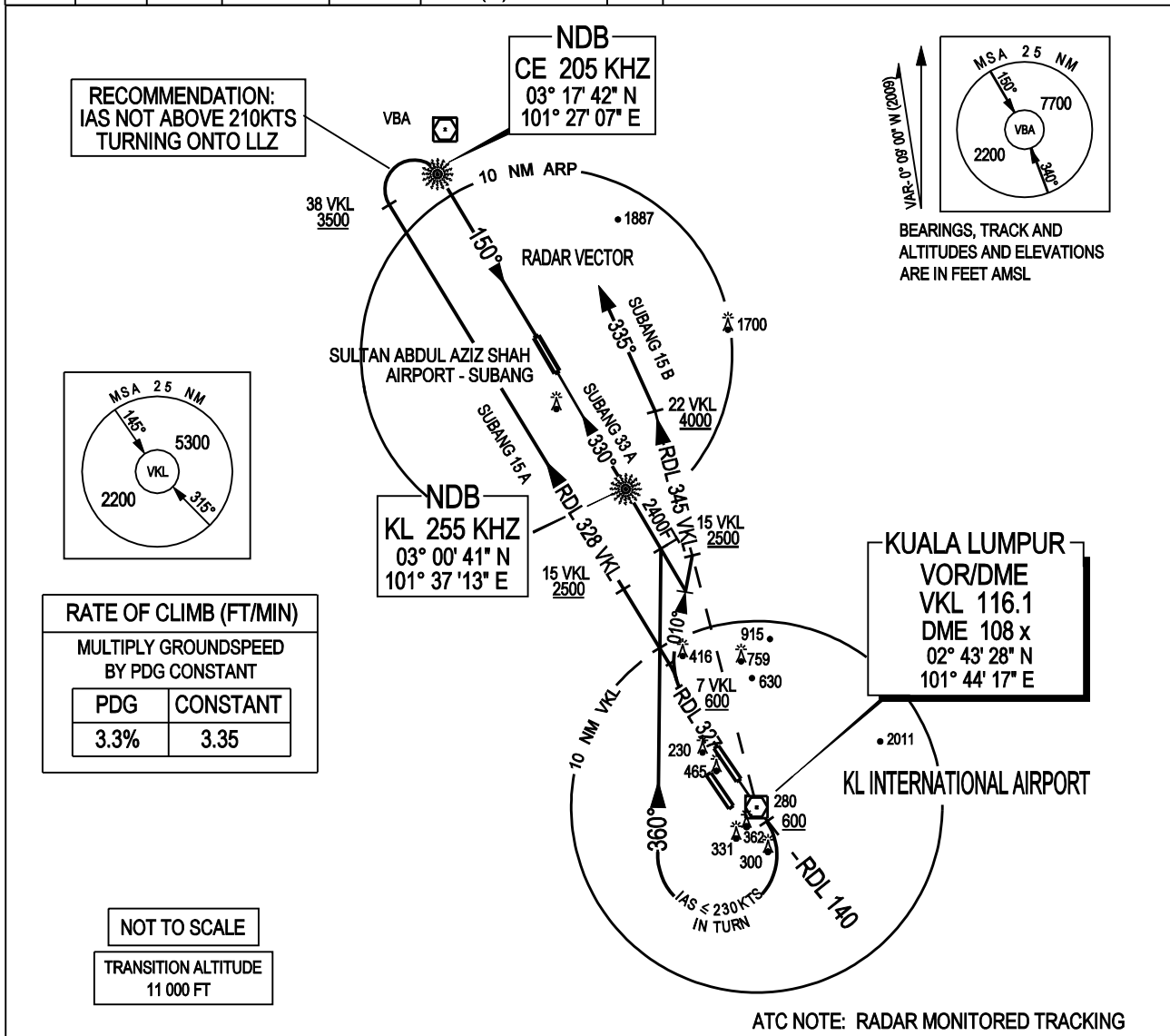
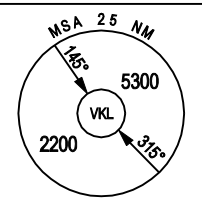


ATIS	126.45	APP N	124.2 MHz	LUMPUR GROUND	
14L/32R	TWR	118.8	(SECONDARY)	121.25 MHz	APRONS (MN, MS, ME & MW) 122.15
	SMC	121.65			APRONS (SE & SS) 122.275
14R/32L	TWR	118.5	APP S	119.45 MHz	APRONS (SN & SW) 122.85
	SMC	121.8	(SECONDARY)	125.1 MHz	APRONS (CN,CE,CW) 123.25
					APRONS (CS) 121.8

SEPANG / KL INTERNATIONAL AIRPORT  
RWY 14L/32R  
DEPARTURES FOR SAAS SUBANG



RECOMMENDATION:  
IAS NOT ABOVE 210KTS  
TURNING ONTO LLZ



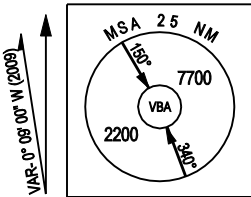
RATE OF CLIMB (FT/MIN)

MULTIPLY GROUND SPEED BY PDG CONSTANT

PDG	CONSTANT
3.3%	3.35

NOT TO SCALE

TRANSITION ALTITUDE  
11 000 FT



BEARINGS, TRACK AND  
ALTITUDES AND ELEVATIONS  
ARE IN FEET AMSL

ATC NOTE: RADAR MONITORED TRACKING

- |   |   |
|---|---|
| <p>SUBANG 15 ALPHA DEPARTURE<br/>SUBANG 15 BRAVO DEPARTURE<br/>SUBANG 33 ALPHA DEPARTURE</p> <p><b>RWY 14L</b></p> <ul style="list-style-type: none"> <li>TRACK 146° TO VKL VOR, THENCE TRACK RDL140 FROM VKL VOR</li> <li>AT VKL VOR OR 600 FT, WHICHEVER IS LATER, TURN RIGHT</li> <li>TRACK 360°</li> </ul> <p><b>FOR SUBANG RWY 15 A</b></p> <ul style="list-style-type: none"> <li>CLIMB TO 3500 FT</li> <li>INTERCEPT RDL 328 OUTBOUND FROM VKL VOR</li> <li>AT 38 DME VKL TURN RIGHT, DESCEND TO 2500 FT</li> <li>INTERCEPT THE LLZ RWY 15</li> </ul> <p><b>FOR SUBANG RWY 33 A</b></p> <ul style="list-style-type: none"> <li>CLIMB TO 2400 FT</li> <li>INTERCEPT THE LLZ RWY 33</li> </ul> | <p><b>RWY 32R</b></p> <ul style="list-style-type: none"> <li>TRACK RDL 327 FROM VKL VOR</li> <li>AT 7 DME VKL, NOT BELOW 600 FT, TURN RIGHT FOR SUBANG RWY 15 A</li> <li>CLIMB TO 3500 FT</li> <li>INTERCEPT RDL 328 OUTBOUND FROM VKL VOR</li> <li>AT 38 DME VKL TURN RIGHT, DESCEND TO 2500 FT</li> <li>INTERCEPT THE LLZ RWY 15</li> </ul> <p><b>FOR SUBANG RWY 15 B</b></p> <ul style="list-style-type: none"> <li>CLIMB TO 4000 FT</li> <li>TRACK 010° TO INTERCEPT RDL 345 OUTBOUND FROM VKL VOR</li> <li>AT 22 DME VKL TURN LEFT HEADING 335°</li> <li>RADAR VECTORING FOR RWY 15</li> </ul> <p><b>FOR SUBANG RWY 33 A</b></p> <ul style="list-style-type: none"> <li>TTRACK 010°, CLIMB TO 2400FT</li> <li>INTERCEPT THE LLZ FOR ILS APPROACH RWY 33</li> </ul> |
|---|---|

**VERTICAL RESTRICTION:**

ADHERE TO VERTICAL RESTRICTIONS eg. 1500 FT = NOT BELOW 1500 FT UNLESS SPECIFICALLY CANCELLED BY ATC.