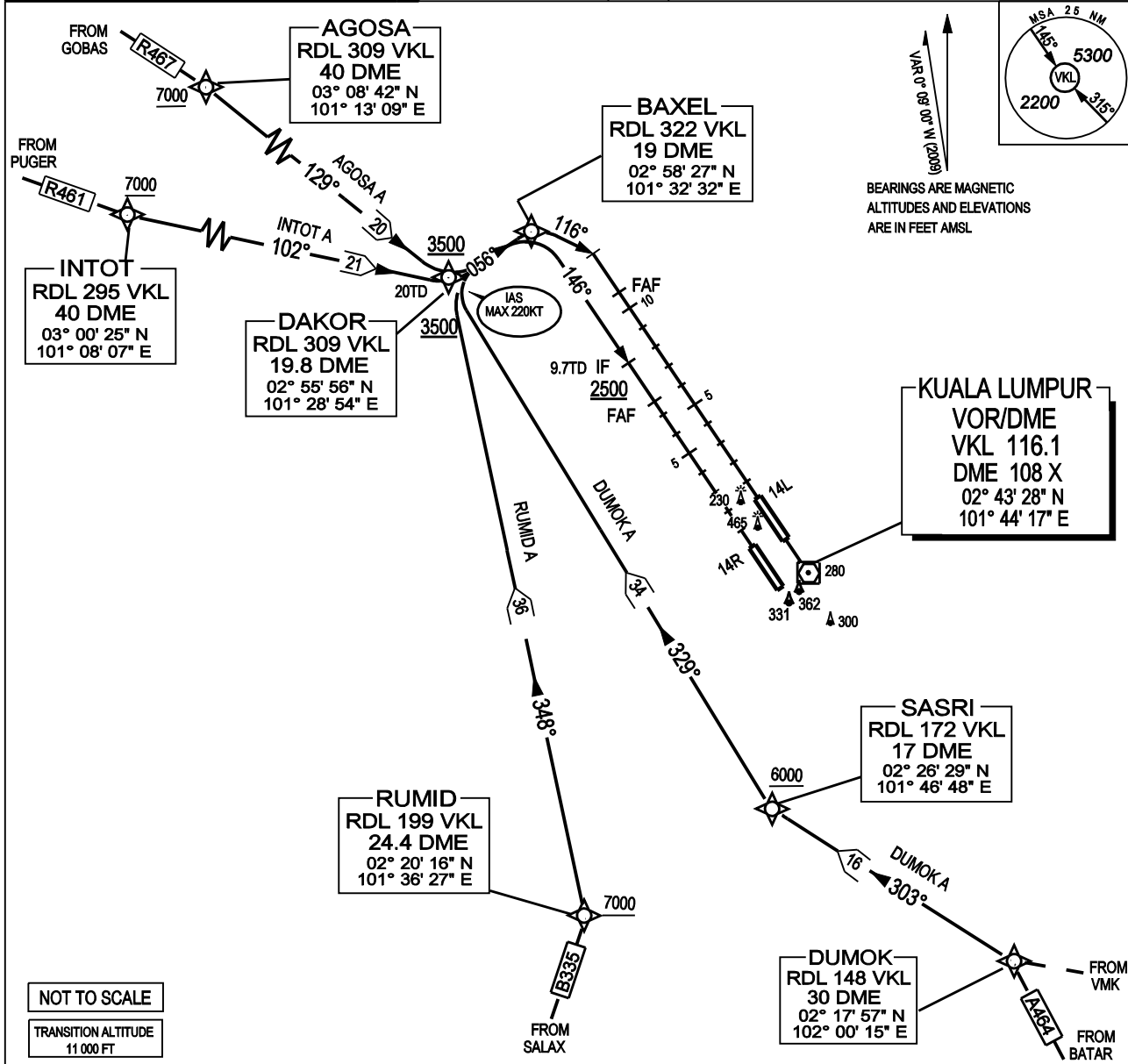


ATIS 126.45			APP N	124.2 MHz	LUMPUR GROUND	
14L/ 32R	TWR	118.8	(SECONDARY)	121.25 MHz	APRONS (MN, MS, ME & MW)	122.15
	SMC	121.65			APRONS (SE & SS)	122.275
14R/ 32L	TWR	118.5	APP S	119.45 MHz	APRONS (SN & SW)	122.85
	SMC	121.8	(SECONDARY)	125.1 MHz	APRONS (CN,CE,CW)	123.25
					APRONS (CS)	121.8

SEPANG/KL INTERNATIONAL AIRPORT
DAKOR TWO ALPHA ARRIVAL
(RNAV TRACKING)



TRANSITION:	AGOSA A:	FROM AGOSA TRACK 129° TO DAKOR	RUMIDA A:	FROM RUMID TRACK 348° TO DAKOR
	INTOT A:	FROM INTOT TRACK 102° TO DAKOR	DUMOK A:	FROM DUMOK TRACK 303° TO SASRI FROM SASRI TRACK 329° TO DAKOR

ARRIVAL:	FOR RWY 14L:	FROM DAKOR TRACK 056°. AT BAXEL TURN RIGHT, TRACK 116°. INTERCEPT THE LLZ (IDENT: IEL 108.5).
	FOR RWY 14R:	FROM DAKOR TRACK 056°. AT BAXEL TURN RIGHT, TRACK 146°. INTERCEPT THE LLZ (IDENT: IWR 110.7).

SPEED RESTRICTION:
FOLLOW SPEED RESTRICTIONS UNLESS INSTRUCTED TO "MAINTAIN HIGH SPEED" OR "NO (ATC) SPEED RESTRICTION"
CROSS 10,000FT 250 KT IAS CROSS DAKOR 220 KT IAS CROSS BAXEL 180 KT IAS 160 KT IAS FROM 10 NM UNTIL 4 NM TO TOUCHDOWN.

VERTICAL RESTRICTION:
ADHERE TO VERTICAL RESTRICTIONS eg. 4500 = NOT BELOW 4500 FT ON DESCENT UNLESS SPECIFICALLY CANCELLED BY ATC.

COMMUNICATIONS FAILURE:
* SQUAWK 7600
* IF UNDER PILOT NAVIGATION - CONTINUE ON STAR AND LAND
* IF UNDER RADAR VECTORING - MAINTAIN VECTOR FOR 1 MINUTE ; IF BELOW MSA, CLIMB TO MSA, THEN TRACK TO INTERCEPT CLEARED OR PREVIOUSLY ASSIGNED STAR AND LAND