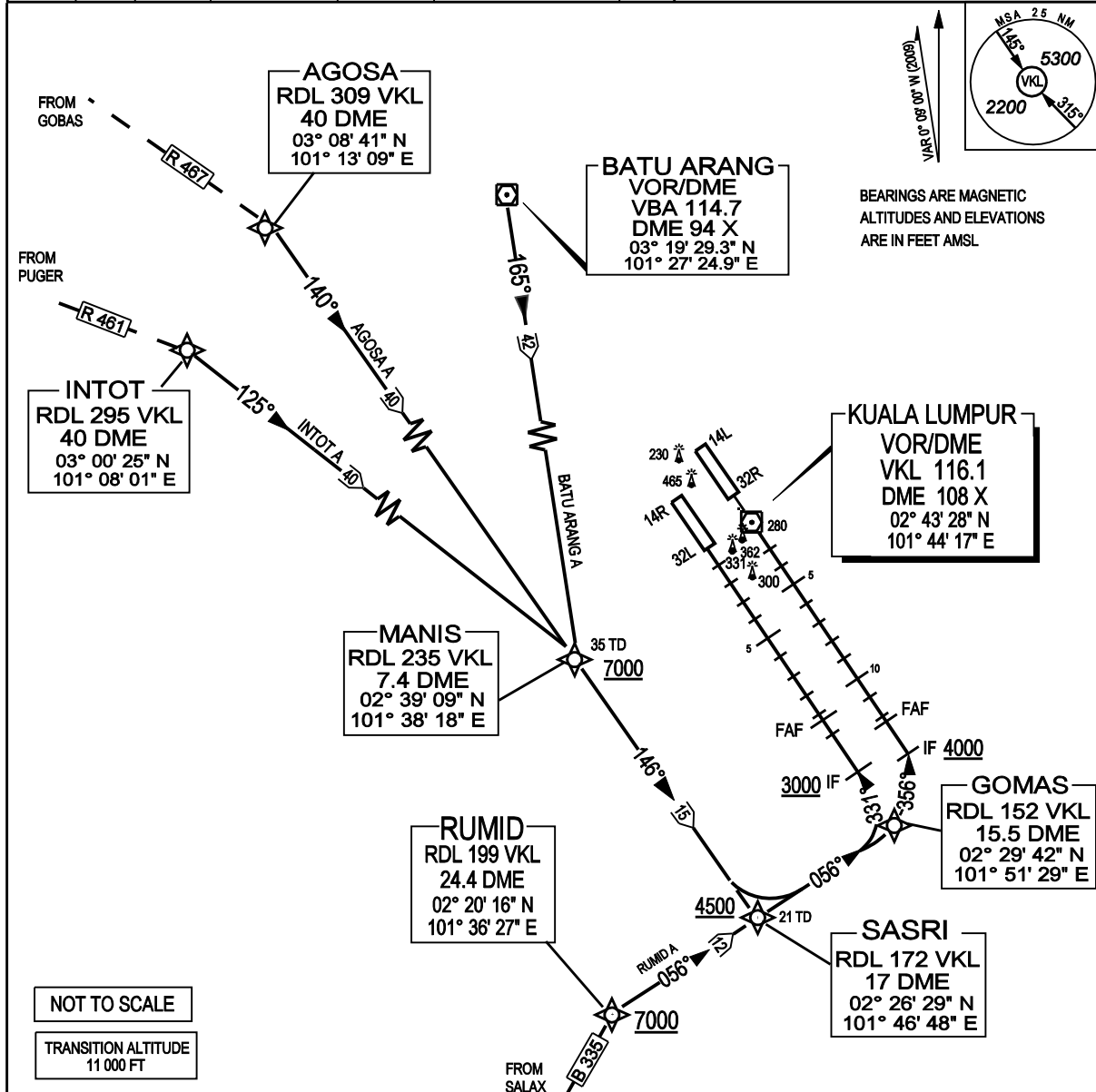


ATIS		126.45	APP N	124.2 MHz	LUMPUR GROUND	
14L/32R	TWR	118.8	(SECONDARY)	121.25 MHz	APRONS (MN, MS, ME & MW)	122.15
	SMC	121.65			APRONS (SE & SS)	122.275
14R/32L	TWR	118.5	APP S	119.45 MHz	APRONS (SN & SW)	122.85
	SMC	121.8	(SECONDARY)	125.1 MHz	APRONS (CN,CE,CW)	123.25
					APRONS (CS)	121.8

SEPANG/KL INTERNATIONAL AIRPORT
SASRI TWO ARRIVAL
(RNAV TRACKING)



TRANSITION	BATU ARANG A :	FROM VBA VOR TRACK 165° TO MANIS FROM MANIS TRACK 146° TO SASRI	INTOT A :	FROM INTOT TRACK 125° TO MANIS FROM MANIS TRACK 146° TO SASRI
	AGOSA A :	FROM AGOSA TRACK 140° TO MANIS FROM MANIS TRACK 146° TO SASRI	RUMID A :	FROM RUMID TRACK 056° TO SASRI

ARRIVAL:
FOR RWY 32L: FROM SASRI TRACK 056°. AT GOMAS TURN LEFT, TRACK 331°. INTERCEPT THE LLZ (IDENT: IWL 111.9).
FOR RWY 32R: FROM SASRI TRACK 056°. AT GOMAS TURN LEFT, TRACK 356°. INTERCEPT THE LLZ (IDENT: IER 109.1).

SPEED RESTRICTION:
FOLLOW SPEED RESTRICTIONS BELOW UNLESS INSTRUCTED TO "MAINTAIN HIGH SPEED" OR "NO (ATC) SPEED RESTRICTION."
CROSS SASRI 220 KT IAS CROSS GOMAS 180 KT IAS 160 KT IAS FROM 10 NM UNTIL 4 NM TO TOUCHDOWN

VERTICAL RESTRICTION
ADHERE TO VERTICAL RESTRICTIONS eg. 4500 = NOT BELOW 4500FT ON DESCENT UNLESS SPECIFICALLY CANCELLED BY ATC

COMMUNICATIONS FAILURE :
* SQUAWK 7600
* IF UNDER PILOT NAVIGATION - CONTINUE ON STAR AND LAND
* IF UNDER "RADAR VECTORING" - MAINTAIN VECTOR FOR 1 MIN,
* IF BELOW MSA, CLIMB TO MSA, THEN TRACK TO INTERCEPT CLEARED OR PREVIOUSLY ASSIGNED STAR AND LAND.