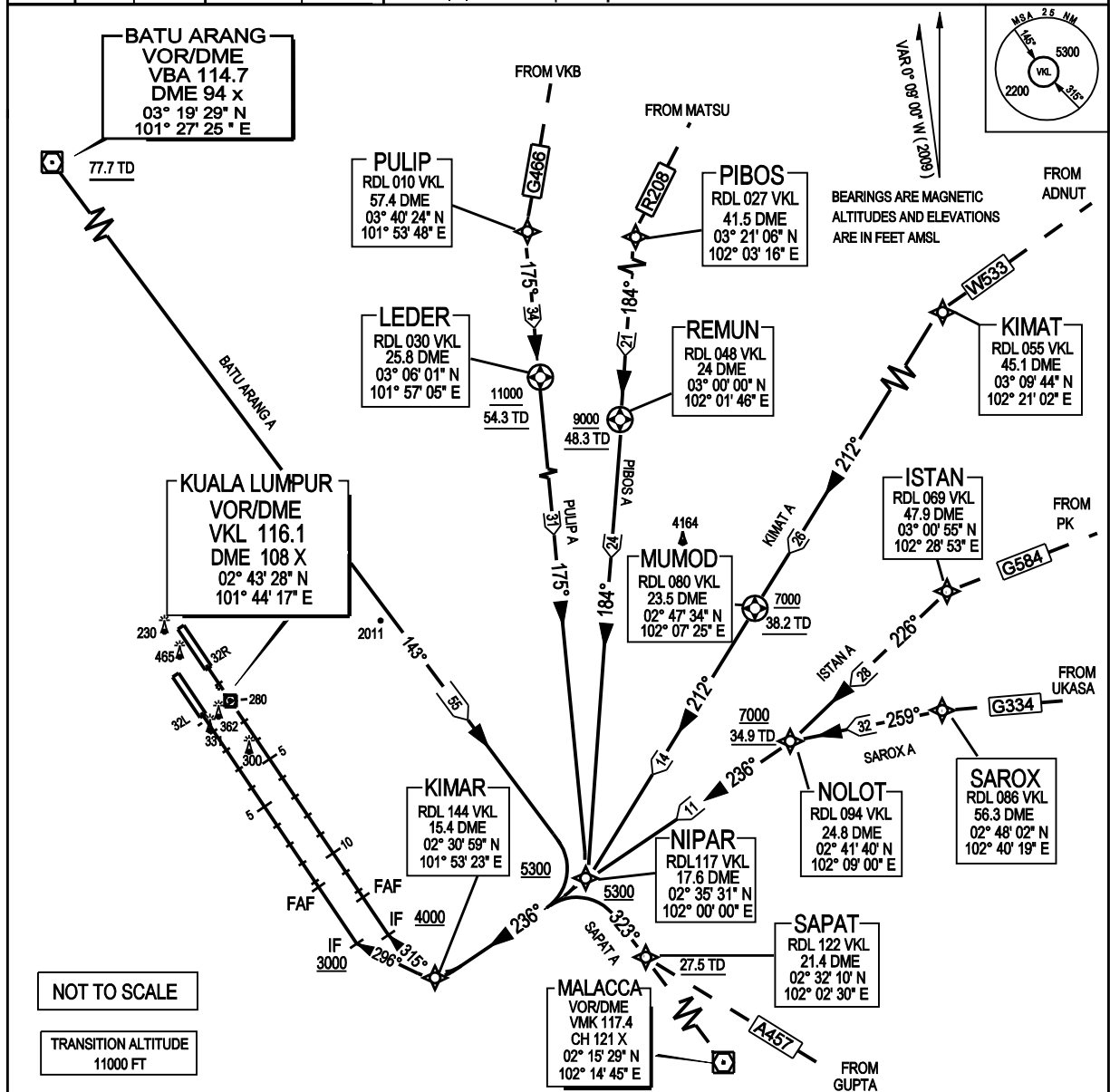


ATIS		126.45	APP N	124.2 MHz	LUMPUR GROUND	
14L/32R	TWR	118.8	(SECONDARY)	121.25 MHz	APRONS (MN, MS, ME & MW)	122.15
	SMC	121.65			APRONS (SE & SS)	122.275
14R/32L	TWR	118.5	APP S	119.45 MHz	APRONS (SN & SW)	122.85
	SMC	121.8	(SECONDARY)	125.1 MHz	APRONS (CN,CE,CW)	123.25
					APRONS (CS)	121.8

SEPANG / KL INTERNATIONAL AIRPORT
NIPAR THREE ALPHA ARRIVAL
(RNAV TRACKING)



TRANSITION:	BATU ARANG A: FROM VBA VOR TRACK 143° TO NIPAR	ISTAN A: FROM ISTAN TRACK 226° TO NOLOT
	PULIP A: FROM PULIP TRACK 175° TO LEDER AND NIPAR	SAROX A: FROM SAROX TRACK 259° TO NOLOT
	PIBOS A: FROM PIBOS TRACK 184° TO REMUN AND NIPAR	SAPAT A: FROM SAPAT TRACK 323° TO NIPAR
	KIMAT A: FROM KIMAT TRACK 212° TO MUMOD AND NIPAR	

ARRIVAL:	FOR RWY 32L: FROM NIPAR TRACK 236°. AT KIMAR TURN RIGHT, TRACK 296°. INTERCEPT THE LLZ (IDENT: IWL 111.9).
	FOR RWY 32R: FROM NIPAR TRACK 236°. AT KIMAR TURN RIGHT, TRACK 315°. INTERCEPT THE LLZ (IDENT: IWL 109.1).

SPEED RESTRICTION:
FOLLOW SPEED RESTRICTIONS UNLESS INSTRUCTED TO *MAINTAIN HIGH SPEED* OR *NO (ATC) SPEED RESTRICTION.*
CROSS 10,000FT 250 KT IAS CROSS NIPAR 220 KT IAS CROSS KIMAR 180 KT IAS 160 KT IAS FROM 10 NM UNTIL 4 NM TO TOUCHDOWN

VERTICAL RESTRICTION:
ADHERE TO VERTICAL RESTRICTION eg. 4500 = NOT BELOW 4500 FT ON DESCENT UNLESS SPECIFICALLY CANCELLED BY ATC

COMMUNICATIONS FAILURE:

- * SQUAWK 7600
- * IF UNDER PILOT NAVIGATION - CONTINUE ON STAR AND LAND
- * IF UNDER RADAR VECTORED - MAINTAIN VECTOR FOR 1 MINUTE ; IF BELOW MSA, CLIMB TO MSA, THEN TRACK TO INTERCEPT CLEARED OR PREVIOUSLY ASSIGNED STAR AND LAND.