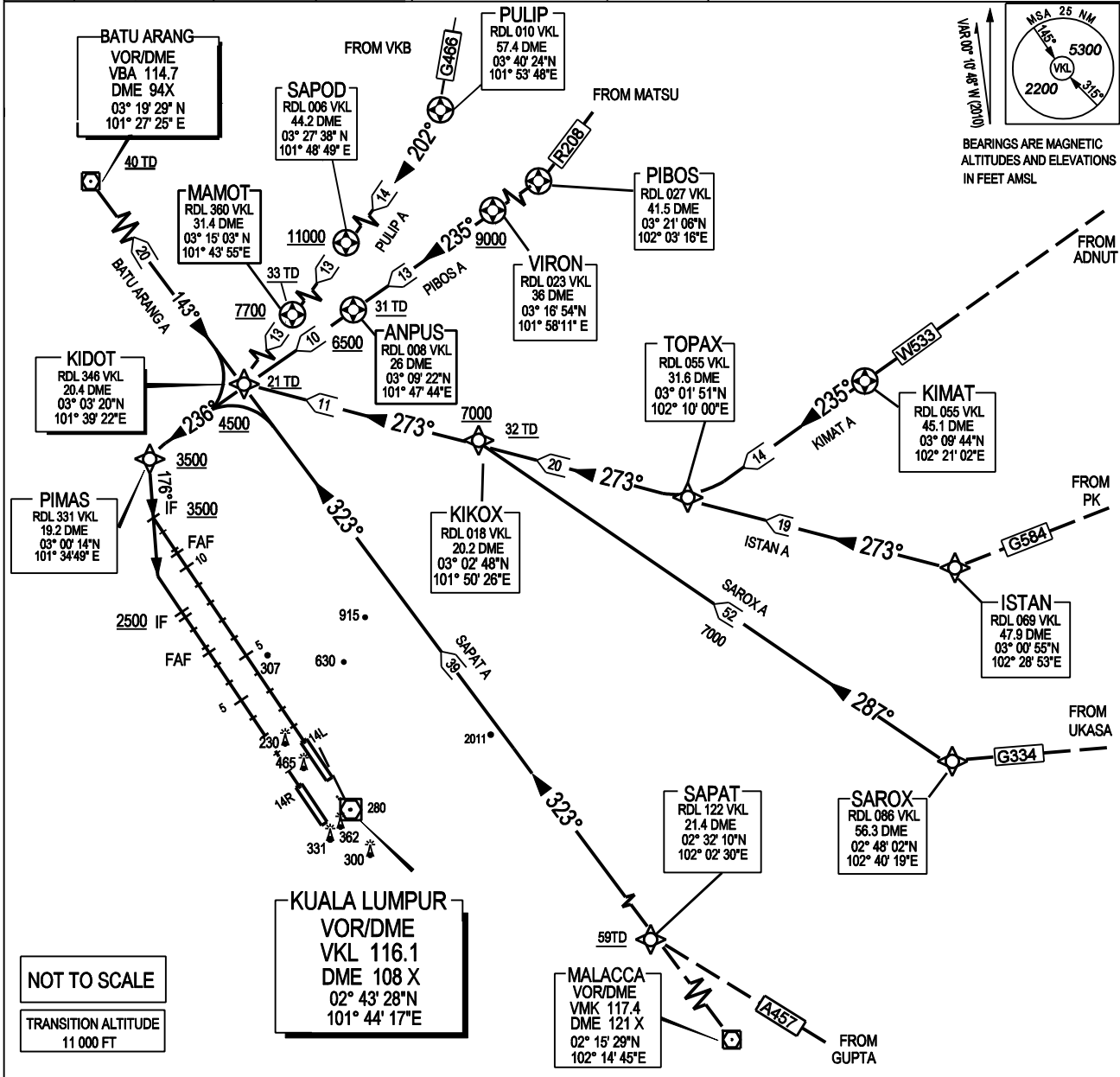


ATIS		126.45	APP N	124.2 MHz	LUMPUR GROUND	
14L/32R	TWR	118.8	(SECONDARY)	121.25 MHz	APRONS (MN, MS, ME & MW)	122.15 MHz
	GND	121.65			APRONS (SE & SS)	122.275 MHz
14R/32L	TWR	118.5	APP S	119.45 MHz	APRONS (SN & SW)	122.85 MHz
	GND	121.8	(SECONDARY)	125.1 MHz	APRONS (CN, CE, CW)	123.25 MHz
					APRONS (CS)	121.8 MHz

SEPANG / KL INTERNATIONAL AIRPORT
KIDOT THREE ALPHA ARRIVAL
(RNAV TRACKING)



TRANSITIONS:

BATU ARANG A: FROM VBA VOR TRACK 143° TO KIDOT
PULIP A: FROM PULIP TRACK 202° TO SAPOD, MAMOT AND KIDOT
PIBOS A: FROM PIBOS TRACK 235° TO VIRON, ANPUS AND KIDOT

KIMAT A:

FROM KIMAT TRACK 235° TO TOPAX
 FROM TOPAX TRACK 273° TO KIKOX AND KIDOT
ISTAN A: FROM ISTAN TRACK 273° TO TOPAX, KIKOX, AND KIDOT
SAROX A: FROM SAROX TRACK 287° TO KIKOX, THENCE 273° TO KIDOT
SAPAT A: FROM SAPAT TRACK 323° TO KIDOT

ARRIVAL :

FOR RWY 14L : FROM KIDOT TRACK 236° TO PIMAS, THENCE 176° TO INTERCEPT THE LLZ. (LLZ IDENT IEL 108.5)
 FOR RWY 14R : FROM KIDOT TRACK 236° TO PIMAS, THENCE 176° TO INTERCEPT THE LLZ. (LLZ IDENT IWR 110.7)

SPEED RESTRICTION :

FOLLOW SPEED RESTRICTIONS UNLESS INSTRUCTED TO *MAINTAIN HIGH SPEED * OR * NO (ATC) SPEED RESTRICTION.*
 CROSS 10,000FT 250 KT IAS CROSS KIDOT 220 KT IAS CROSS PIMAS 180 KT IAS 160 KT IAS FROM 10 NM UNTIL 4 NM TO TOUCHDOWN

VERTICAL RESTRICTION:

ADHERE TO VERTICAL RESTRICTIONS eg. 4500 = NOT BELOW 4500 FT ON DESCENT UNLESS SPECIFICALLY CANCELLED BY ATC

COMMUNICATIONS FAILURE

- * SQUAWK 7600
- * IF UNDER PILOT NAVIGATION - CONTINUE ON STAR AND LAND
- * IF UNDER RADAR VECTORED - MAINTAIN VECTOR FOR 1 MINUTE ; IF BELOW MSA, CLIMB TO MSA, THEN TRACK TO INTERCEPT CLEARED OR PREVIOUSLY ASSIGNED STAR AND LAND