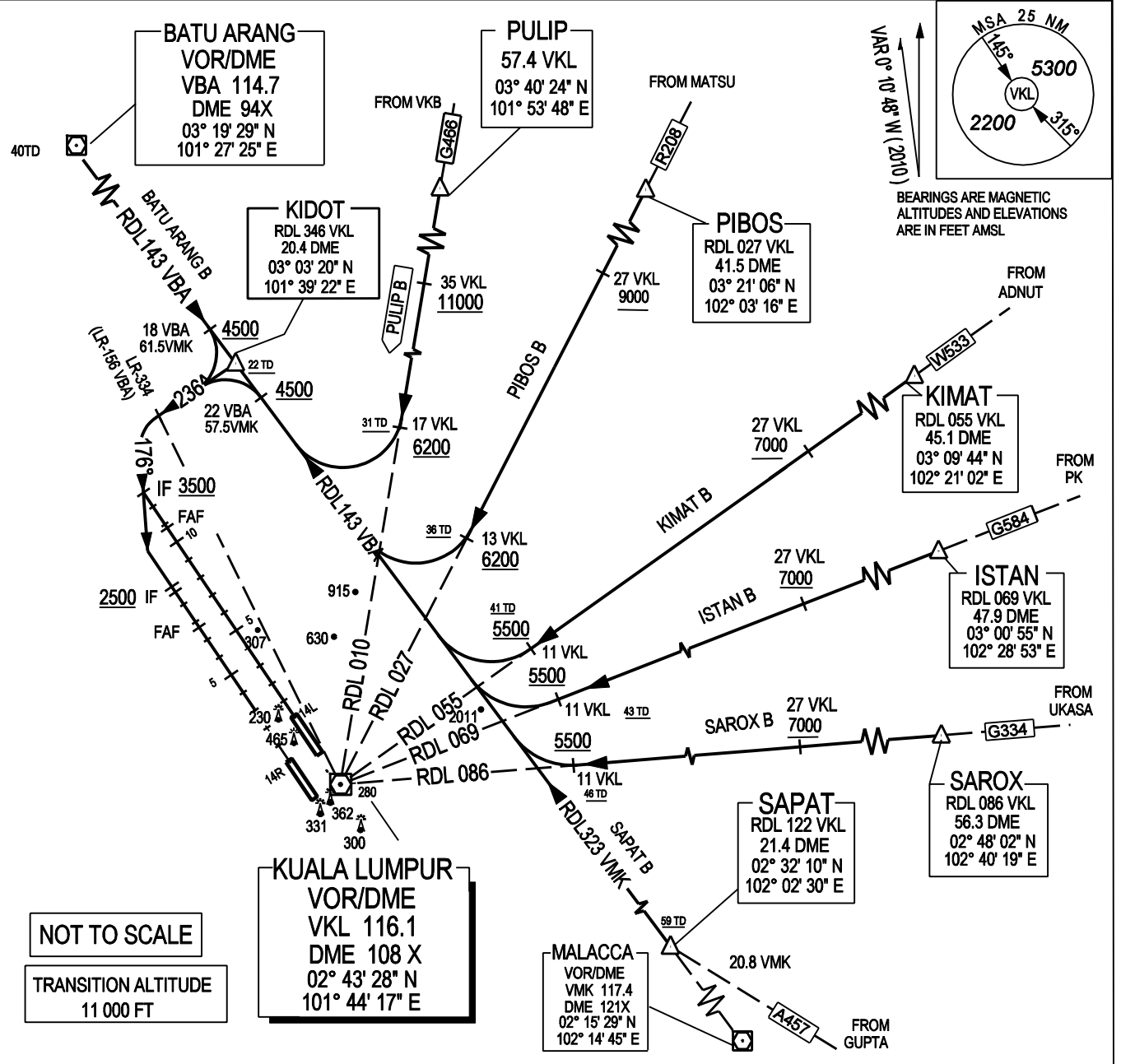


ATIS		126.45	APP N	124.2 MHz	LUMPUR GROUND	
14L/32R	TWR	118.8	(SECONDARY)	121.25 MHz	APRONS (MN, MS, ME & MW)	122.15 MHz
	GND	121.65			APRONS (SE & SS)	122.275 MHz
14R/32L	TWR	118.5	APP S	119.45 MHz	APRONS (SN & SW)	122.85 MHz
	GND	121.8	(SECONDARY)	125.1 MHz	APRONS (CN, CE, CW)	123.25 MHz
					APRONS (CS)	121.8 MHz

SEPNG / KL INTERNATIONAL AIRPORT
KIDOT THREE BRAVO ARRIVAL



NOT TO SCALE
TRANSITION ALTITUDE
11 000 FT

TRANSITION: (NOTE: RDL 323 VMK AND RDL 143 VBA ARE INTER - CHANGEABLE)

BATU ARANG B: FROM VBA VOR TRACK RDL 143 OUTBOUND TO KIDOT

PULIP B: FROM PULIP TRACK INBOUND ON RDL 010 VKL VOR

PIBOS B: AT 17 DME VKL TURN RIGHT, TRACK RDL 143 VBA TO KIDOT
FROM PIBOS TRACK INBOUND ON RDL 027 VKL VOR
AT 13 DME VKL TURN RIGHT, TRACK RDL 143 VBA TO KIDOT

KIMAT B: FROM KIMAT TRACK INBOUND ON RDL 055 VKL VOR
AT 11 DME VKL TURN RIGHT, TRACK RDL 143 VBA TO KIDOT

ISTAN B: FROM ISTAN TRACK INBOUND ON RDL 069 VKL VOR
AT 11 DME VKL TURN RIGHT, TRACK RDL 143 VBA TO KIDOT

SAROX B: FROM SAROX TRACK INBOUND ON RDL 086 VKL VOR
AT 11 DME VKL TURN RIGHT, TRACK RDL 143 VBA TO KIDOT

SAPAT B: FROM SAPAT TRACK INBOUND ON RDL 143 VBA TO KIDOT

ARRIVAL: FOR RWY 14 L : FROM KIDOT TRACK 236°. CROSSING LR - 334 VKL (LR - 156 VBA) TURN LEFT, TRACK 176°. INTERCEPT THE LLZ. (LLZ IDENT IEL 108.5)
FOR RWY 14 R : FROM KIDOT TRACK 236°. CROSSING LR - 334 VKL (LR - 156 VBA) TURN LEFT, TRACK 176°. INTERCEPT THE LLZ. (LLZ IDENT IWR 110.7)

VERTICAL RESTRICTION:
ADHERE TO VERTICAL RESTRICTIONS ON DESCENT, TD = TOUCH DOWN DISTANCE eg: 4500 FT = NOT BELOW 4500 FT UNLESS SPECIFICALLY CANCELLED BY ATC.

COMMUNICATIONS FAILURE:
SQUAWK 7600
IF UNDER PILOT NAVIGATION - CONTINUE ON STAR AND LAND
IF UNDER RADAR VECTORED - MAINTAIN VECTOR FOR 1 MINUTE, IF BELOW MSA, CLIMB TO MSA.
THEN TRACK TO INTERCEPT CLEARED OR PREVIOUSLY ASSIGNED STAR AND LAND