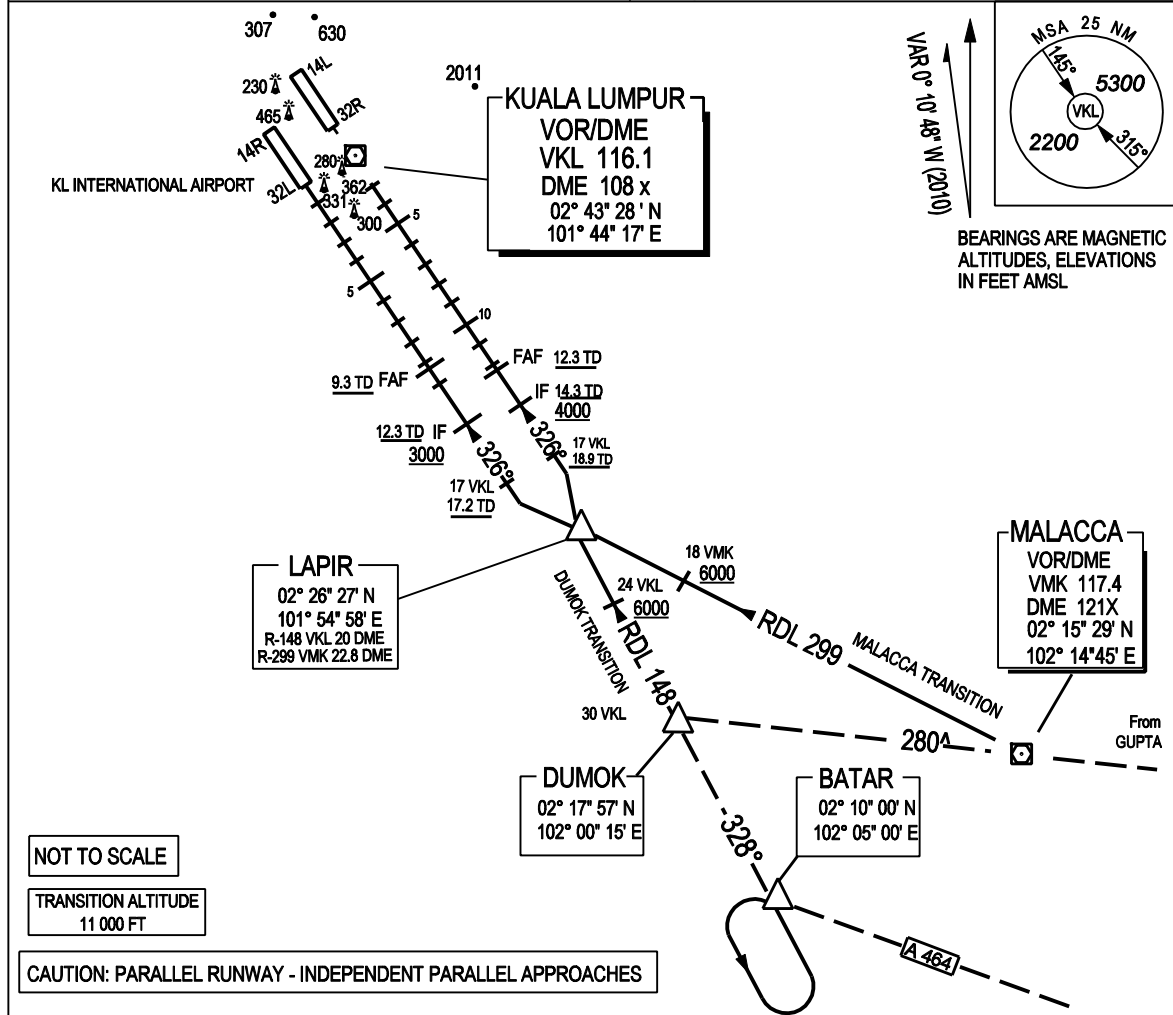


CHART INSTRUMENT STANDARD ARRIVAL
(STAR) - ICAO

WMKK AD 2 - 66

ATIS		126.45	APP N	124.2 MHz	LUMPUR GROUND	
14L	TWR	118.8	(SECONDARY)	121.25 MHz	APRONS (MN, MS, ME & MW)	122.15
32R	GND	121.65			APRONS (SE & SS)	122.275
			APP S	119.45 MHz	APRONS (SN & SW)	122.85
14R	TWR	118.5	(SECONDARY)	125.1 MHz	APRONS (CN, CE, CW)	123.25
32L	GND	121.8			APRONS (CS)	121.8

SEPANG / KL INTERNATIONAL AIRPORT
LAPIR TWO ARRIVAL



NOT TO SCALE

TRANSITION ALTITUDE
11 000 FT

CAUTION: PARALLEL RUNWAY - INDEPENDENT PARALLEL APPROACHES

TRANSITION	DUMOK :	FROM DUMOK TRACK INBOUND ON RDL 148 VKL VOR TO LAPIR
	MALACCA :	FROM VMK VOR TRACK RDL 299 OUTBOUND FROM VMK VOR TO LAPIR

ARRIVAL	FOR RWY 32L :	FROM LAPIR TRACK (298°) TO INTERCEPT THE LLZ (IDENT: IWL 111.9) BY 17 DME VKL (17.2 TD) MAKE STRAIGHT IN ILS APPROACH TO RWY 32L. CONTACT TOWER AT FAF
LAPIR TWO	FOR RWY 32R :	FROM LAPIR TRACK (335°) TO INTERCEPT THE LLZ (IDENT: IER 109.1) BY 17 DME VKL (18.9 TD) MAKE STRAIGHT- IN ILS APPROACH TO RWY 32R. CONTACT TOWER AT FAF

VERTICAL RESTRICTION :
ADHERE TO VERTICAL RESTRICTIONS (STAR STEPS) ON DESCENT, TD = TOUCH DOWN DISTANCE
eg: 4500 FT = NOT BELOW 4500 FT UNLESS SPECIFICALLY CANCELLED BY ATC.

COMMUNICATIONS FAILURE :
SQUAWK 7600
IF UNDER PILOT NAVIGATION - CONTINUE ON STAR AND LAND
IF UNDER RADAR VECTORED - MAINTAIN VECTOR FOR 1 MINUTE ; IF BELOW MSA, CLIMB TO MSA, THEN TRACK TO INTERCEPT CLEARED OR PREVIOUSLY ASSIGNED STAR AND LAND