

**STANDARD ARRIVAL  
CHART INSTRUMENT  
(STAR) - ICAO**

TRANSITION ALTITUDE  
11 000 ft

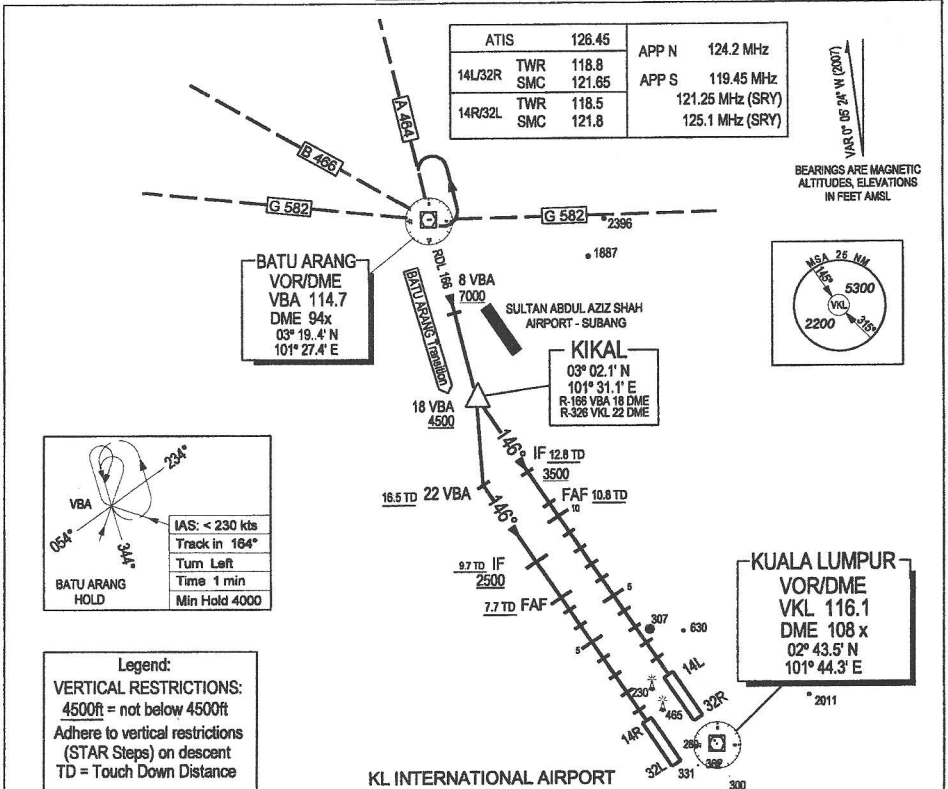
LUMPUR GROUND	
APRONS (MN, MS, ME & MW)	122.15
APRONS (SE & SS)	122.275
APRONS (SN & SW)	122.85
APRONS (CN,CE,CW)	123.25
APRONS (CS)	121.8

**SEPANG / KL INTERNATIONAL AIRPORT  
KIKAL TWO ARRIVAL**

ATIS	126.45	APP N	124.2 MHz
14L/32R TWR	118.8	APP S	119.45 MHz
SMC	121.85		121.25 MHz (SRV)
14R/32L TWR	118.5		125.1 MHz (SRV)
SMC	121.8		



BEARINGS ARE MAGNETIC  
ALTITUDES, ELEVATIONS  
IN FEET AMSL



Caution: Parallel Runways - Independent Parallel Approaches

**TRANSITION  
BATU ARANG :**

**ARRIVAL**

**KIKAL** For Rwy 14L: From KIKAL make straight - in ILS approach to RWY 14L (Ident: IEL 108.5)  
**TWO** Contact Tower at FAF

For Rwy 14R: From KIKAL track R-166 from VBA VOR to intercept the LLZ (Ident: IWR 110.7)  
Make straight - in ILS approach to Rwy 14R. Contact Tower at FAF

**COMMUNICATIONS FAILURE :**

- \* Squawk 7600
- \* If under PILOT NAVIGATION - continue on STAR and land
- \* If under RADAR VECTORING - maintain vector for 1 minute; if below MSA, climb to MSA, then track to intercept cleared or previously assigned STAR and land