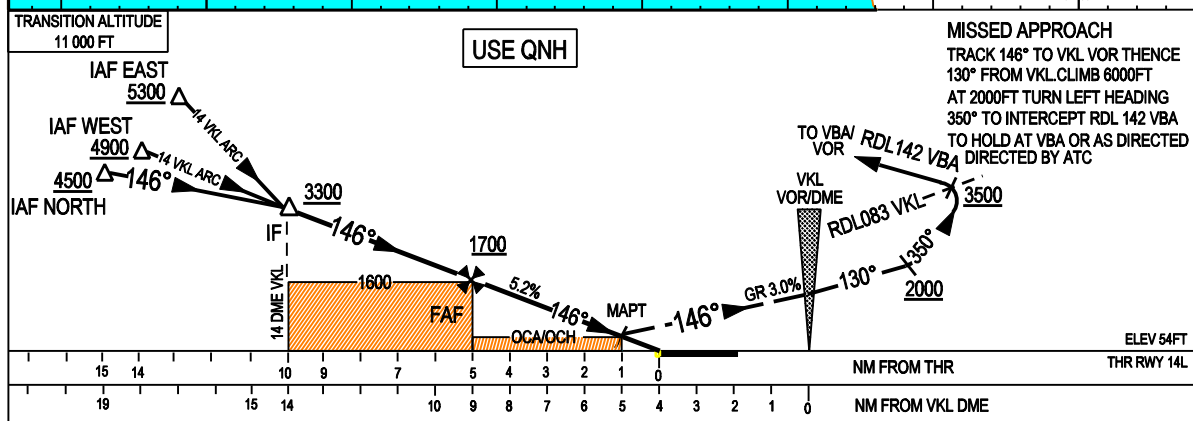
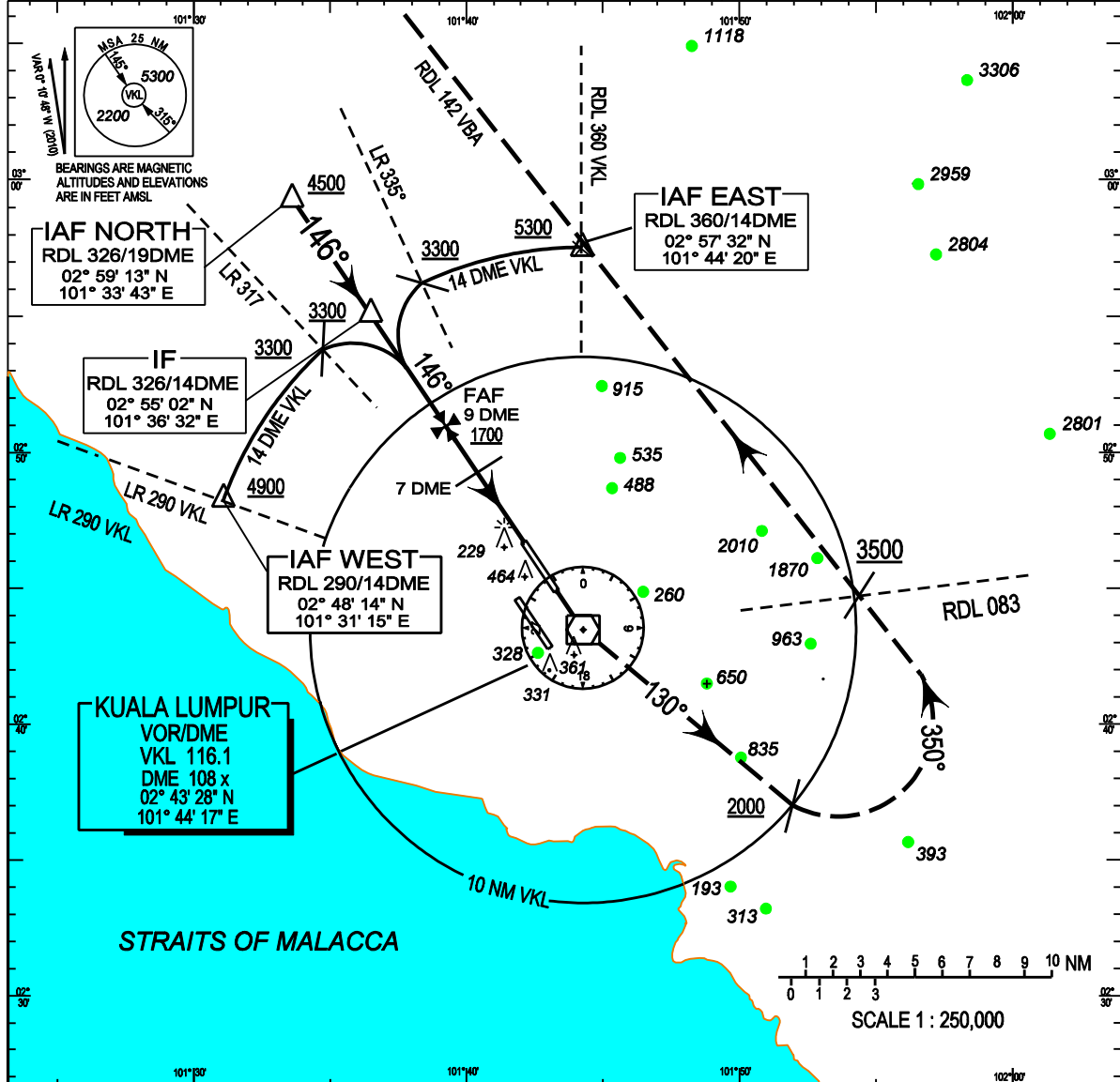


**INSTRUMENT APPROACH  
CHART - ICAO**

WMKK AD 2 - 81

AD ELEV 70FT OCH RELATED TO THR RWY 14L - ELEV 54FT	ATIS 126.45		APP N	124.2 MHz	LUMPUR GROUND	
	14L/32R	TWR 118.8	(SECONDARY)	121.25 MHz	APRONS (MN, MS, ME & MM) 122.15	
		GND 121.85			APRONS (SE & SS) 122.275	
	14R/32L	TWR 118.5	APP S	119.45 MHz	APRONS (SN & SW) 122.85	
	GND 121.8	(SECONDARY)	125.1 MHz	APRONS (GN,CE,CW) 123.25		
				APRONS (CS) 121.8		

**SEPANG / KL INTERNATIONAL  
AIRPORT**  
**VOR/DME  
RWY 14L**



OCA (OCH)					ALTITUDE (FT)									
AIRCRAFT CATEGORY	A	B	C	D	3300	2900	2600	2300	2000	1700	1360	1020	680	470
STRAIGHT-IN-APP	430 (376)		450 (396)	470 (416)	DME FM VKL	14	13	12	11	10	9	8	7	6
CIRCLING	760 (706)		1260 (1206)		G.S (KT)			80	110	140	170	200		
NOTE: CIRCLING NOT PERMITTED WEST OF RWY 14L/32R CENTERLINE					FAF - 5.0NM (MIN:SEC)			3:44	2:43	2:08	1:45	1:29		
					RATE OF DESC. 5.2% (FT/MIN)			421	579	737	895	1053		