

**INSTRUMENT  
APPROACH  
CHART - ICAO**

AD ELEV 70ft  
HEIGHT RELATED TO  
THR RWY 14R - ELEV 55ft

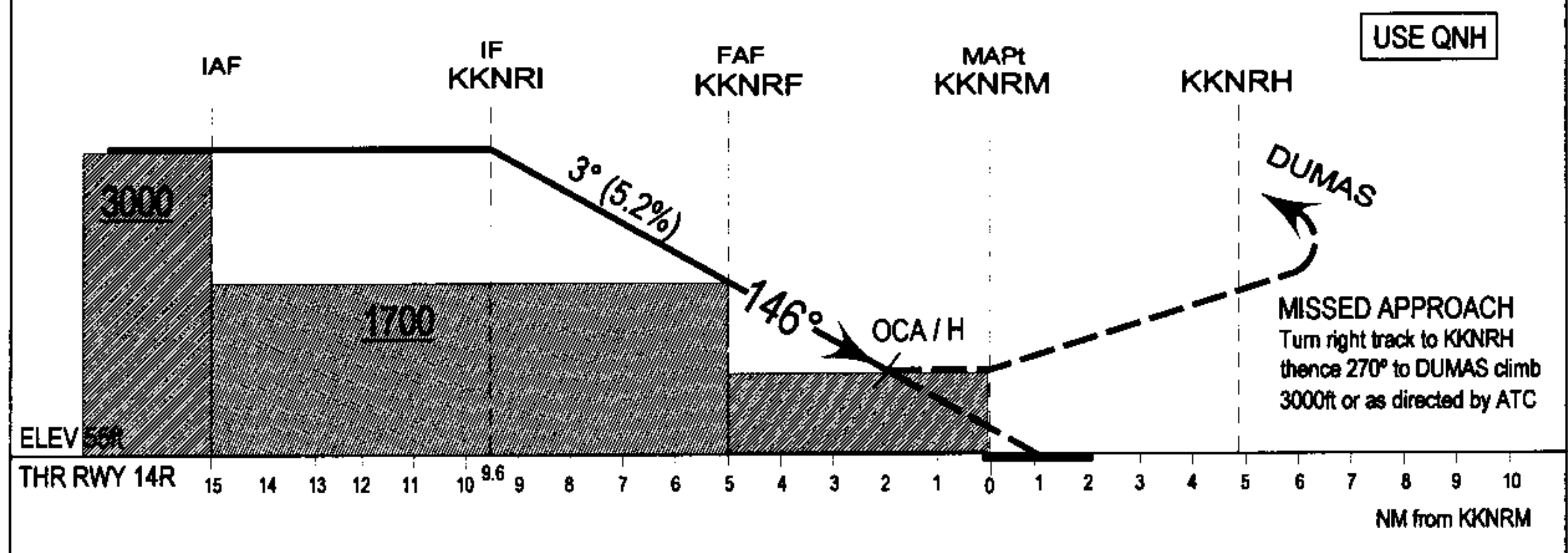
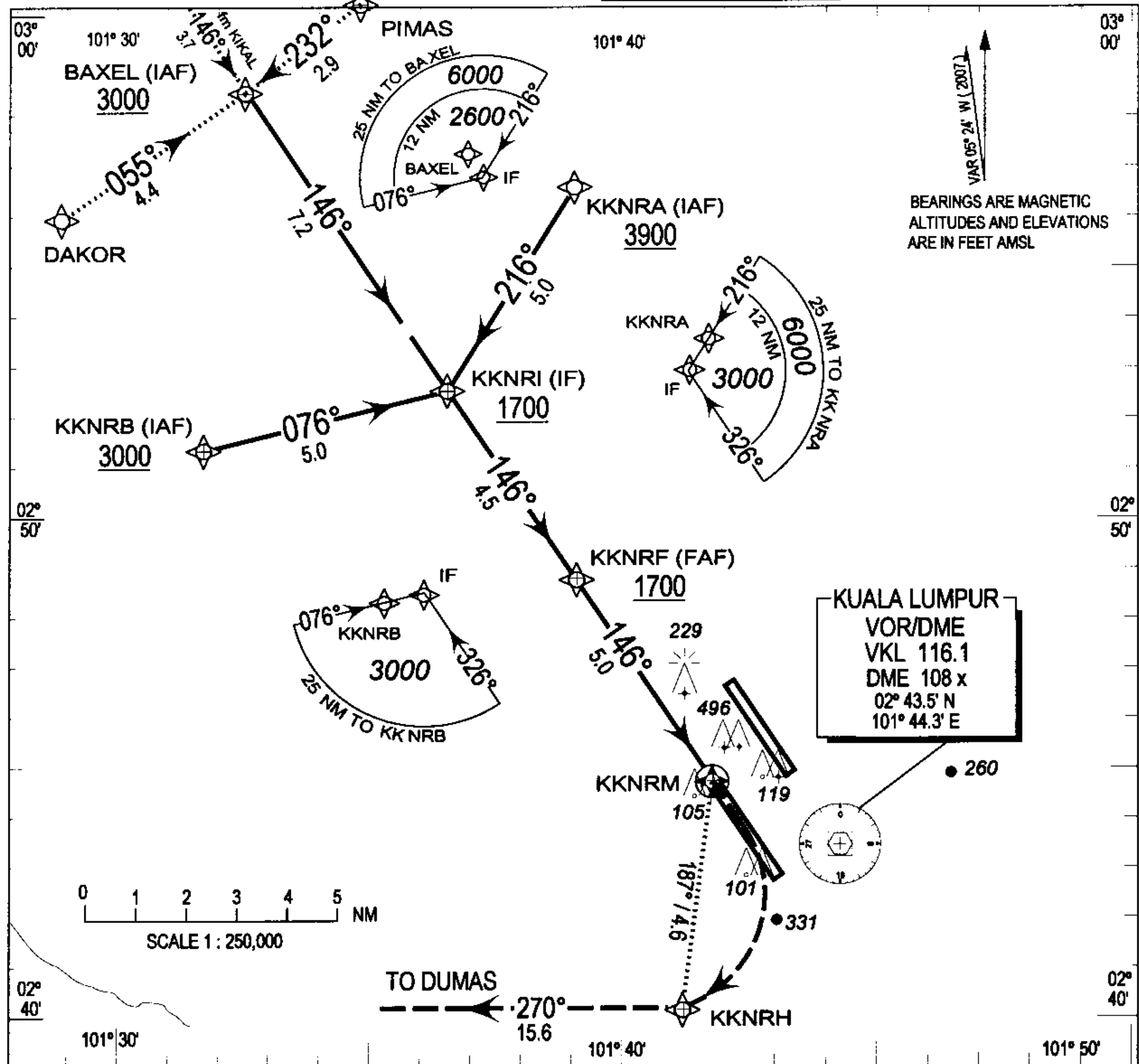
TRANSITION LEVEL  
FL 130

**SEPANG/KL INTERNATIONAL AIRPORT**

APP DIRECTOR 125.1 Mhz  
APP N 124.2 Mhz  
APP S 119.45 Mhz  
121.25 Mhz(SRY)

**RNAV (GNSS)**

**RWY 14R**



OCA/H				
Aircraft Category	A	B	C	D
Straight-in Approach	710 (655)			

NM to next WP	4	3	2	1	KKNRF	4	3	2	1.9	KKNRM
Alt (3° Approach Path)	3000	2650	2350	2030	1700	1390	1070	750	710	

## WAYPOINT COORDINATES

WAYPOINTS	COORDINATES	RADIAL / DISTANCE FROM VKL VOR
KKNRA	02° 56' 35.4" N 101° 39' 31.2" E	R - 339 / 14.3D
KKNRB	02° 51' 18" N 101° 31' 37.2" E	R - 302 / 115.1 D
BAXEL	02° 58' 27.1" N 101° 32' 31.9" E	R - 322 / 19.0 D
KKNRI	02° 52' 31.8" N 101° 36' 33" E	R - 319 / 12.3 D
KKNRF	02° 48' 43.8" N 101° 39' 04.8" E	R - 315 / 7.8 D
KKNRM ( Mapt-Fly-over )	02° 44' 36" N 101° 41' 54" E	R - 297 / 3.0 D
KKNRH ( Turn point )	02° 40' 09" N 101° 41' 12.8" E	R - 223 / 4.5 D