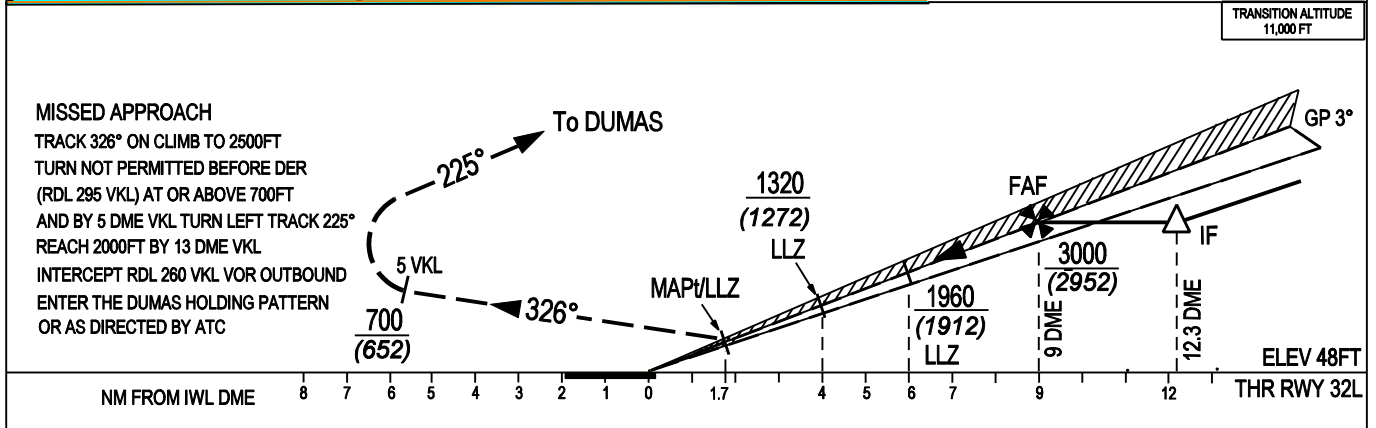
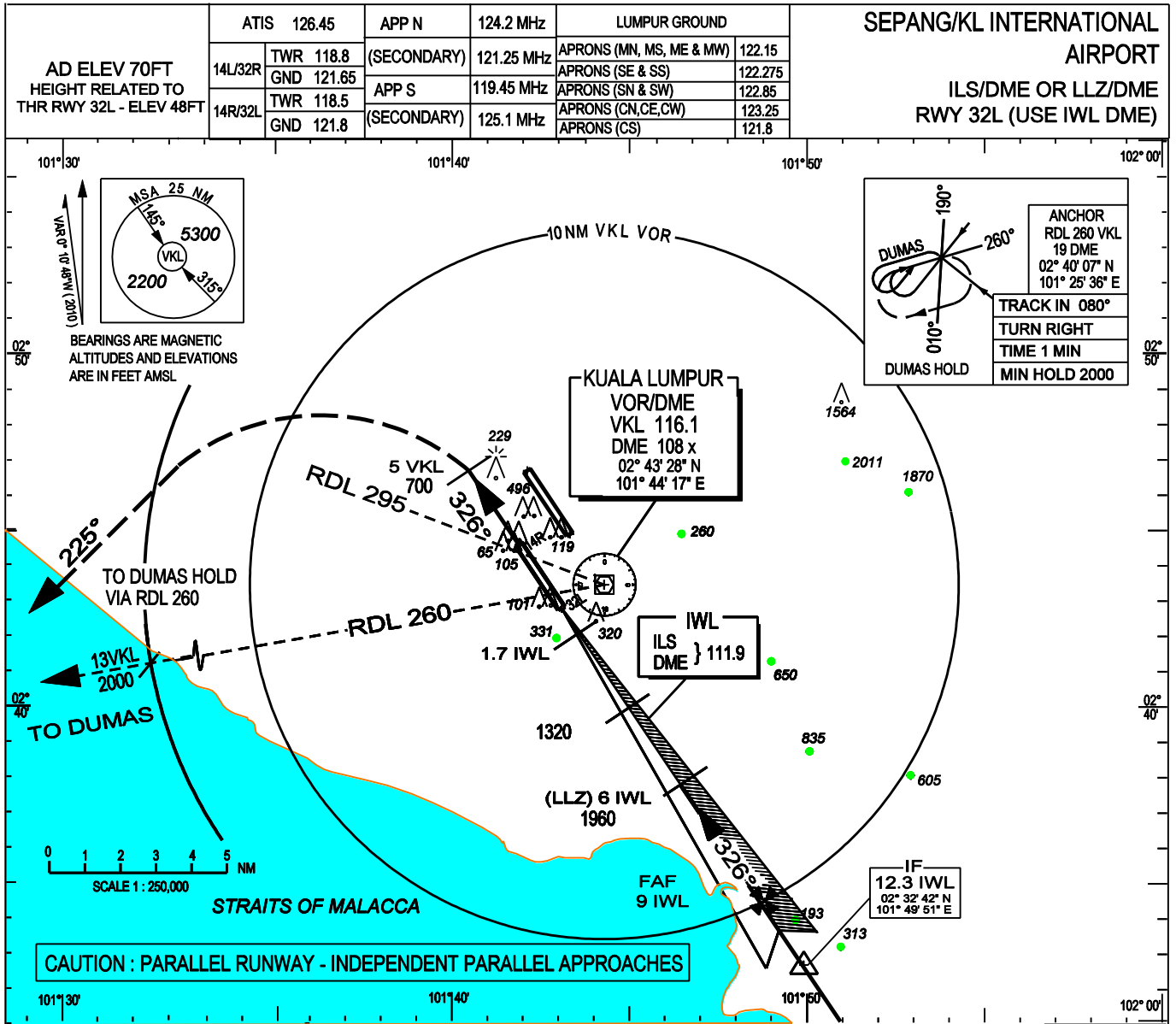


**INSTRUMENT APPROACH
CHART - ICAO**

WMKK AD 2 - 93



OCA (OCH)

AIRCRAFT CATEGORY		A	B	C	D	DL
		ILS/DME	CAT I	248 (200)		
LLZ/DME	GP INOP	570 (522)				
CIRCLING *		760 (712)			1260 (1212)	

NOTE: * CIRCLING NOT PERMITTED EAST OF 14R
RWY 32L/14R CENTRELINE, EXCEPT WHEN
AUTHORISED BY ATC

DME DIST	9.3	9	8	7	6	5
ALTITUDE	3000	2915	2600	2280	1960	1640

DME DIST	4	3	2	
ALTITUDE	1320	1000	680	