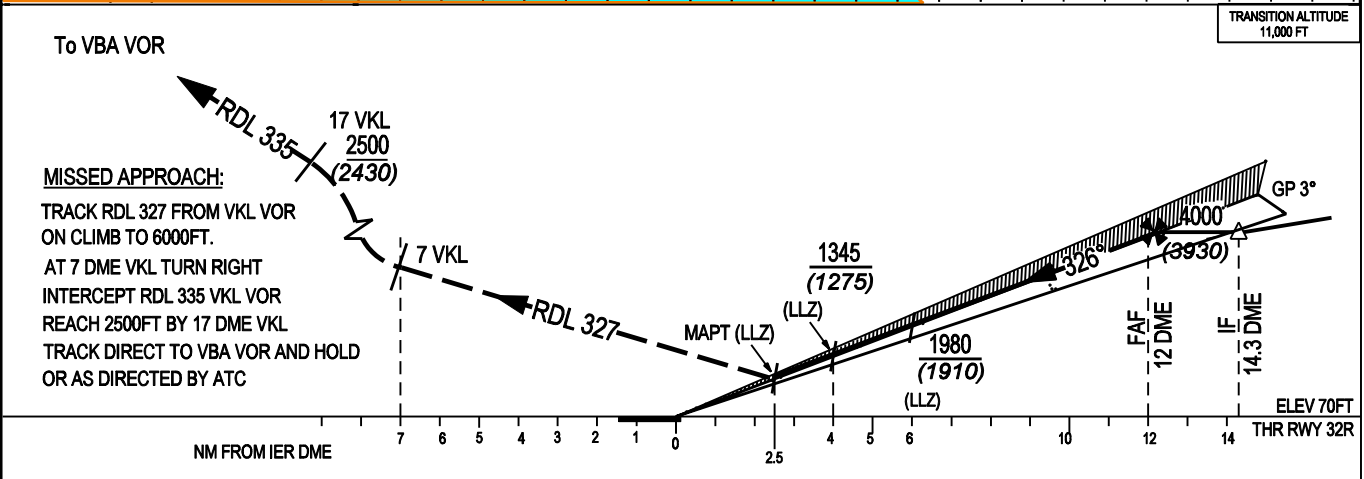
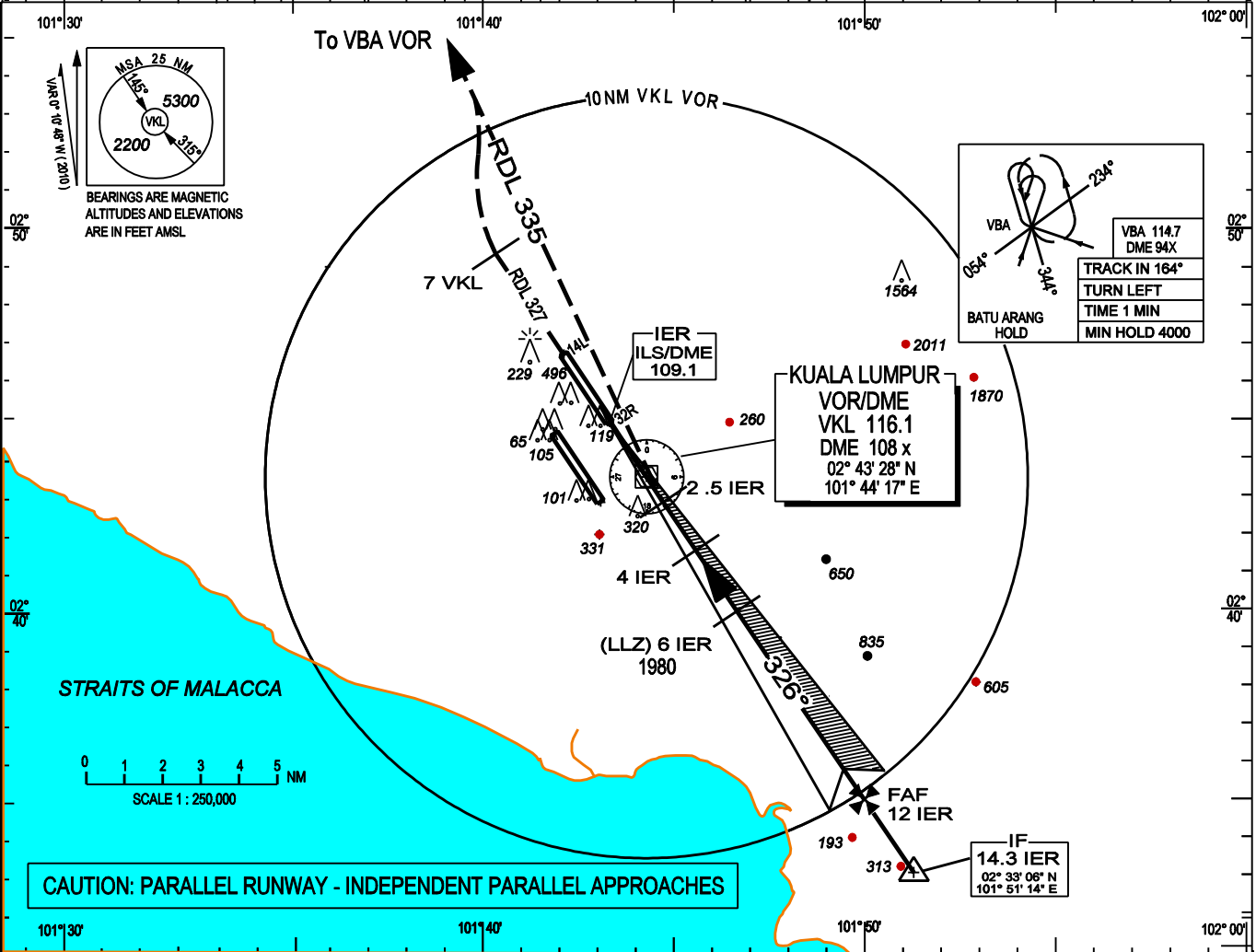


**INSTRUMENT APPROACH
CHART - ICAO**

WMKK AD 2 - 99

AD ELEV 70FT HEIGHT RELATED TO THR RWY 32R - ELEV 70FT	ATIS 126.45		APP N 124.2 MHz	LUMPUR GROUND		SEPANG/KL INTERNATIONAL AIRPORT ILS/DME OR LLZ/DME RWY 32R (USE IER DME)
	14L/32R	TWR 118.8 GND 121.65	(SECONDARY) 121.25 MHz	APRONS (MN, MS, ME & MW) APRONS (SE & SS)	122.15 122.275	
	14R/32L	TWR 118.5 GND 121.8	(SECONDARY) 125.1 MHz	APRONS (SN & SW) APRONS (CN,CE,CW) APRONS (CS)	122.85 123.25 121.8	
	APP S 119.45 MHz					



NOTE: * CIRCLING NOT PERMITTED WEST OF RWY 32R/14L CENTRELINE, EXCEPT WHEN AUTHORISED BY ATC

OCA(OCH)						
AIRCRAFT CATEGORY		A	B	C	D	DL
ILS/DME	CAT I	270 (200)				
LLZ/DME	GP INOP	860 (790)				
CIRCLING *		860 (790)		1260 (1190)		

DME DIST	12.3	12	11	10	9	8	7
ALTITUDE	4000	3890	3570	3255	2935	2615	2300

DME DIST	6	5	4	3	2.6		
ALTITUDE	1980	1660	1345	1025	900		