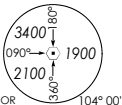


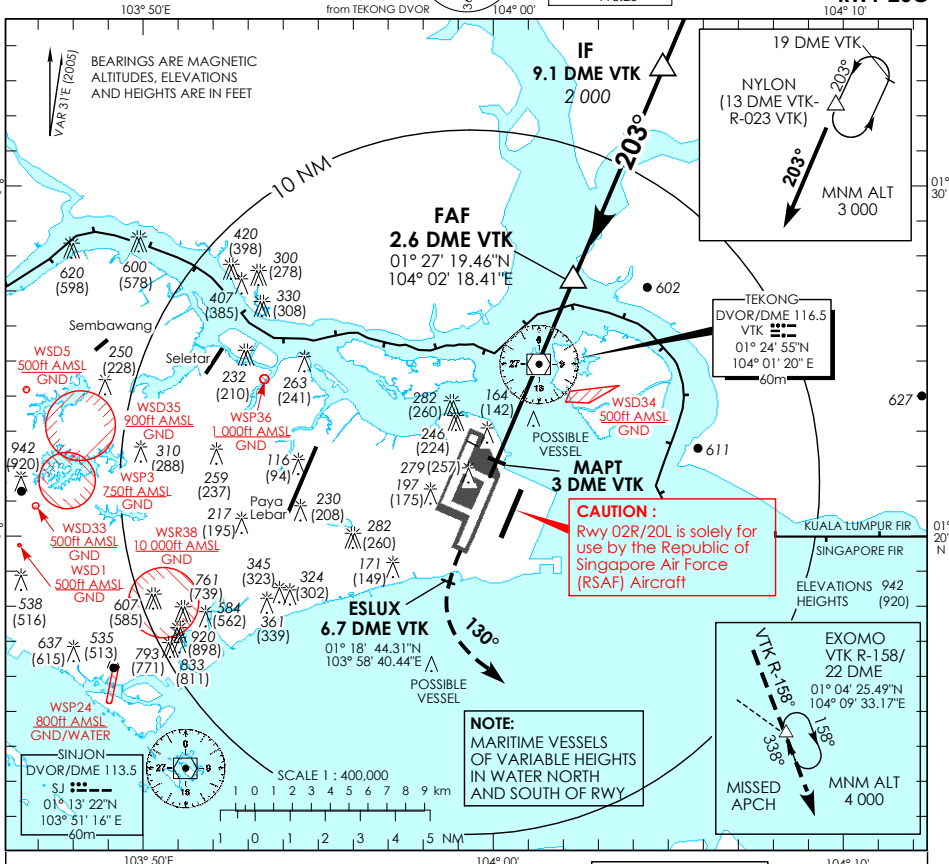
**INSTRUMENT
APPROACH
CHART - ICAO**

AERODROME ELEV 22ft
HEIGHT RELATED TO
AD ELEV



D-ATIS AP ID WSS	128.6
APP	120.3
TWR	119.3
	118.6
	118.25

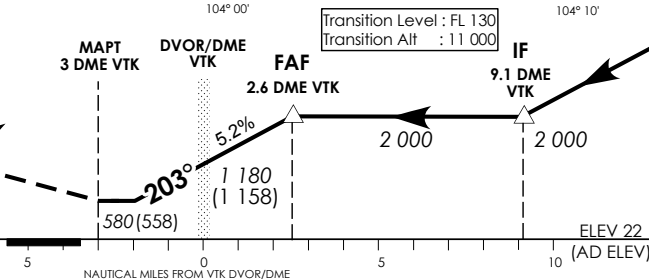
**SINGAPORE/
SINGAPORE CHANGI
VTK DVOR/DME
RWY 20C**



CAUTION :
Rwy 02R/20L is solely for use by the Republic of Singapore Air Force (RSAF) Aircraft

NOTE:
MARITIME VESSELS
OF VARIABLE HEIGHTS
IN WATER NORTH
AND SOUTH OF RWY

MISSED APPROACH
Climb to 4,000ft via VTK R-203 to ESLUX (6.7 DME VTK). At ESLUX (1,000ft or above) turn left heading 130° to intercept VTK R-158 to EXOMO (VTK R-158/22 DME) and hold or AS DIRECTED BY ATC.



OCA (OCH)				
Category of Aircraft	A	B	C	D
Straight-in	580 (558)			
Distance	2 DME	1 DME	VTK	1 DME
Altitude (Height)	1820 (1798)	1500 (1478)	1180 (1158)	860 (838)
Speed	knots	70	120	150
FAF - MAPT 5.6nm	min : s	4 : 48	2 : 48	2 : 15
Rate of descent/GS	ft/min	370	635	795
			980	