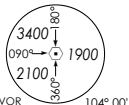


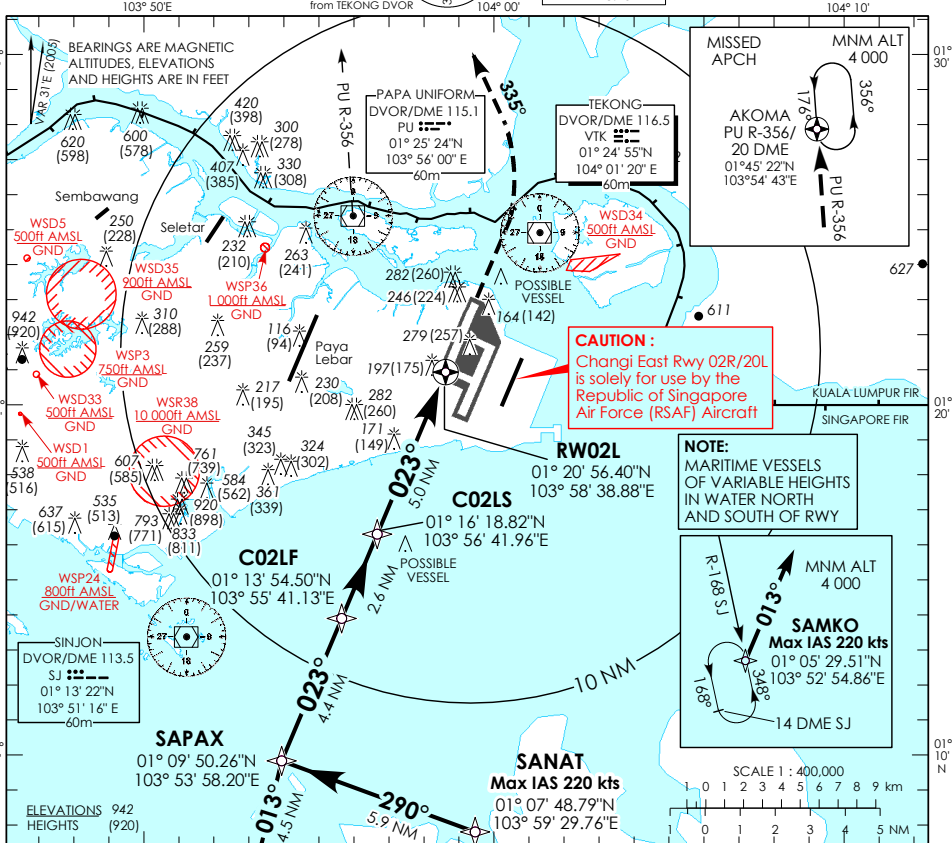
INSTRUMENT APPROACH CHART

AERODROME ELEV **22ft**
HEIGHT RELATED TO
THR RWY 02L - ELEV **22ft**



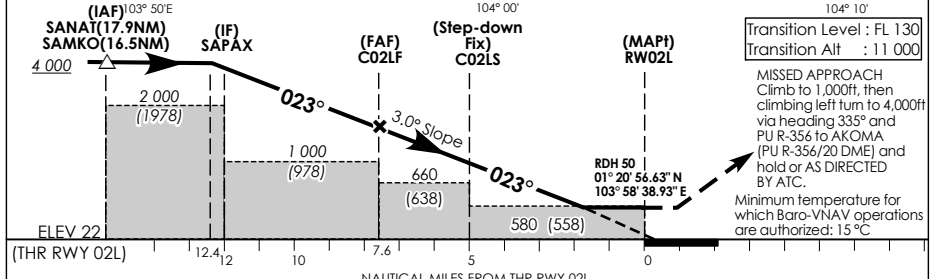
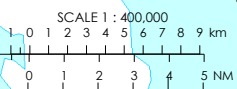
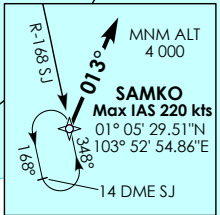
D-ATIS AP ID WSSS	128.6
APP	120.3
TWR	119.3
	118.6
	118.25

**SINGAPORE/ SINGAPORE CHANGI
RNAV (GNSS) RWY 02L**



CAUTION:
Changi East Rwy 02R/20L is solely for use by the Republic of Singapore Air Force (RSAF) Aircraft

NOTE:
MARITIME VESSELS OF VARIABLE HEIGHTS IN WATER NORTH AND SOUTH OF RWY



Transition Level : **FL 130**
Transition Alt : **11 000**
MISSED APPROACH
Climb to 1,000ft, then climbing left turn to 4,000ft via heading 335° and PU R-356 to AKOMA (PU R-356/20 DME) and hold or AS DIRECTED BY ATC.
Minimum temperature for which Baro-VNAV operations are authorized: 15 °C

Category of Aircraft	OCA (OCH)			
	A	B	C	D
LNAV/VNAV	530 (508)			
LNAV with step-down fix	580 (558)			
Fix	SAMKO	SANAT	SAPAX	C02LS
Altitude (Height)	4000 (3978)	4000 (3978)	3900 (3878)	2500 (2478)
Speed	knots	70	120	150
FAF - MAPt 7.6nm	min : s	6 : 31	3 : 48	3 : 03
Rate of descent/GS	ft/min	370	635	795