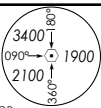


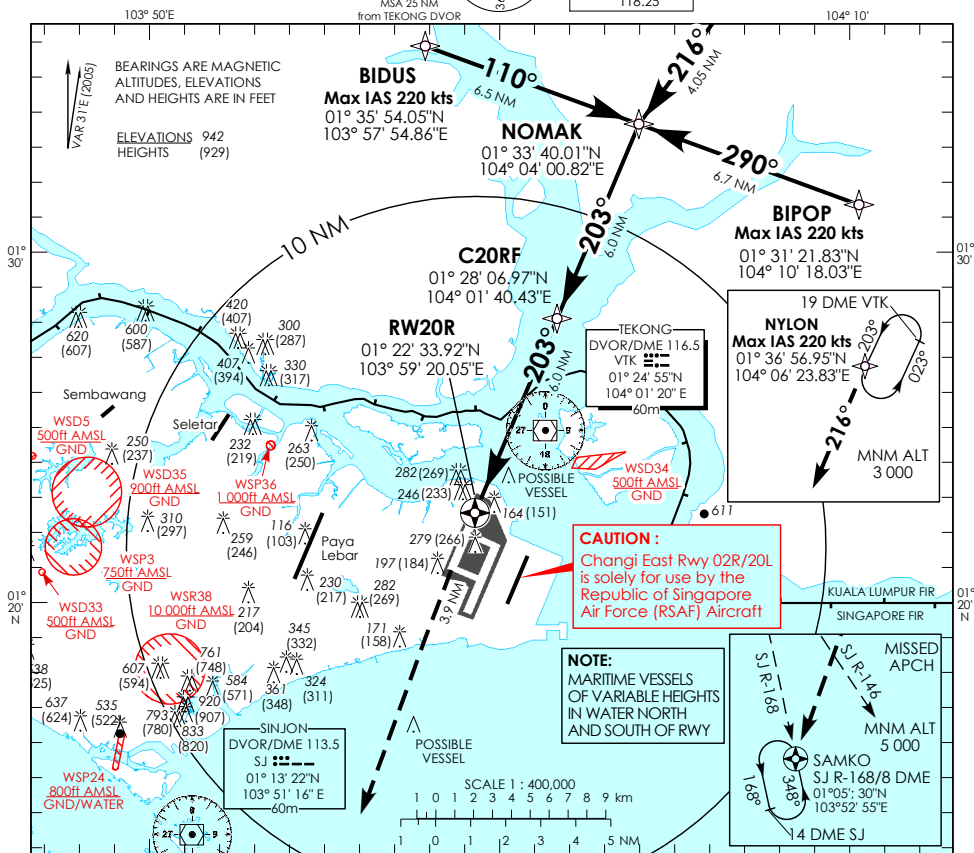
**INSTRUMENT
APPROACH
CHART - ICAO**

AERODROME ELEV 22ft
HEIGHT RELATED TO
DTHR RWY 20R - ELEV 13ft



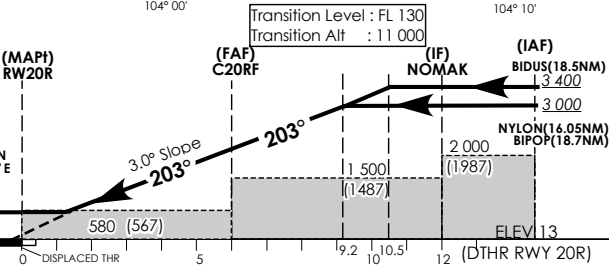
D-ATIS	AP ID	WSSS
APP	128.6	
TWR	120.3	
	119.3	
	118.6	
	118.25	

**SINGAPORE/
SINGAPORE CHANGI
RNAV (GNSS) RWY 20R**



MISSED APPROACH
Climb straight ahead to 5,000ft.
On crossing SJ R-146, proceed
direct to SAMKO Holding Area
and hold or AS DIRECTED BY ATC.

Minimum temperature
for which Baro-VNAV
operations are
authorized: 15°C



Category of Aircraft	OCA (OCH)						
	A	B	C	D			
LNNAV/VNAV	530 (517)						
LNNAV	580 (567)						
Fix	BIDUS	NYLON	BIPOP	NOMAK	C2ORF	RW20R	SAMKO
Altitude (Height)	3400 (3387)	3000 (2987)	3000 (2987)	3000 (2987)	2000 (1987)	580 (567)	5000 (4987)
Speed	70		120		150		185
FAF - MAPt 6.0 nm	min : s		3 : 00		2 : 24		1 : 56
Rate of descent/GS	370		635		795		980