

**STANDARD DEPARTURE CHART -
INSTRUMENT (SID)**

TWR 118.6 / 118.25
APP 120.3 / 124.05
ACC 134.4

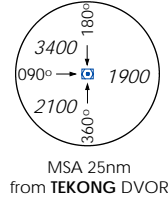
TRANSITION ALTITUDE
11 000ft

D-ATIS AP ID-WSSS
128.6

**SINGAPORE/Singapore Changi
RWY 02L/20R
VENTU DEPARTURES
VEN 1E (R02L), VEN 1F (R20R)
RNAV(GNSS)**

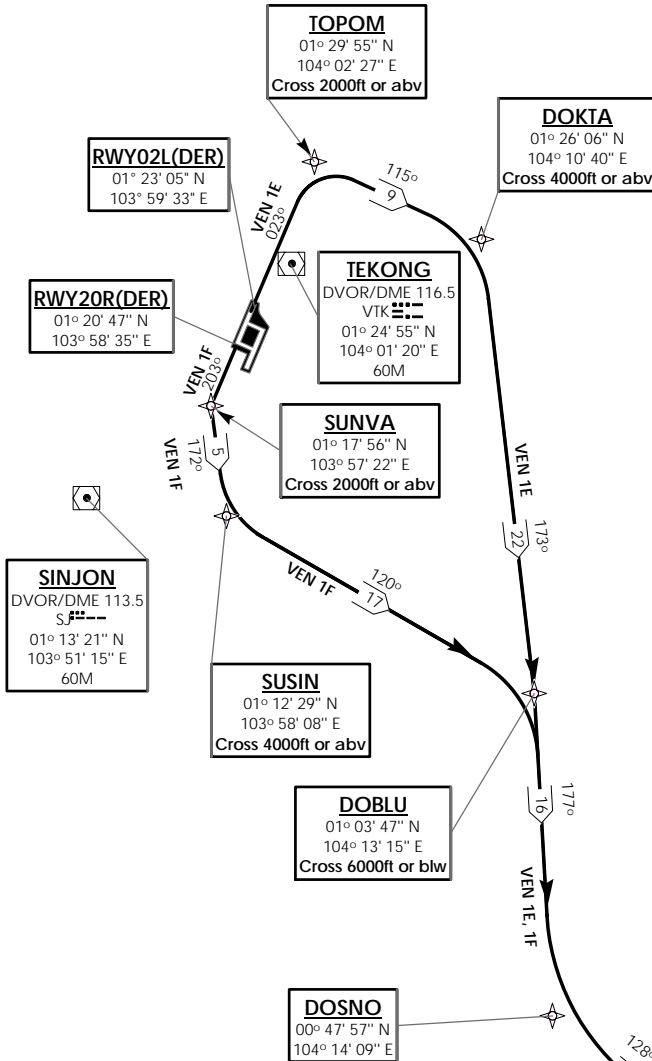
ELEV, ALT IN FEET
BEARINGS, TRACKS AND
RADIALS ARE MAGNETIC
VAR 31°E (2005)

DISTANCES IN NM



NOTE: RADAR REQUIRED

NOTE: REFER TO BACK PAGE FOR
A) CONVENTIONAL PROCEDURES
B) RADIO COM FAILURE PROCEDURES
C) CROSS REFERENCE FROM NAVAID



GENERAL INFORMATION

ALL SIDS INCLUDE NOISE PREFERENTIAL ROUTES.

INITIAL DEPARTURE CLIMB ALTITUDE IS 3000FT OR AS DIRECTED BY ATC.

CRUISING LEVELS WILL BE ISSUED AFTER TAKE-OFF BY SINGAPORE RADAR.

RWY 02L/C

FOR MINIMUM CLIMB GRADIENT CRITERIA :
RWY 02L - SEE ENR 1.5-4
RWY 02C - SEE ENR 1.5-4

RWY 20C/R

DEPARTURES SHALL BE ON A MINIMUM NET CLIMB GRADIENT OF 5% UNTIL REACHING OR PASSING 400FT, THEREAFTER 3.3%.

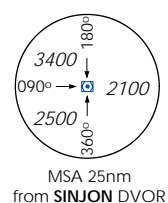
GND SPEED - KNOTS	75	100	150	200	250	300
5% V/V (fpm)	380	506	760	1013	1266	1519
3.3% V/V (fpm)	251	334	501	668	835	1003

THE RESTRICTION TO CROSS SUDPO OR SUNVA AT OR ABOVE 2000FT IS APPLICABLE BETWEEN 2301/1100 UTC.

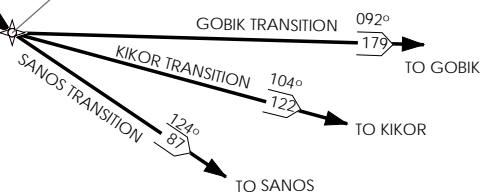
ALL DEPARTURE AIRCRAFT ON RWY 20C/R ISSUED WITH HEADING INSTRUCTIONS BY ATC SHALL ALSO CROSS 8 DME VTK AT OR ABOVE 2000FT BTN 2301/1100 UTC.

IF THE HEIGHT RESTRICTION CANNOT BE COMPLIED WITH, THE PILOT-IN-COMMAND OF AN AIRCRAFT DEPARTURE ON RWY 20C/R SHALL INFORM ATC DURING THE TIME WHEN THE AIRCRAFT COMMENCES TAXIING TO THE HOLDING POINT FOR DEPARTURE.

NOT TO SCALE



VENTU
00° 05' 48" N
105° 06' 48" E



(A) BASIC RNAV DEPARTURES

For non-RNP1/P-RNAV approved aircraft or whose RNP1/P-RNAV capability have been degraded

VENTU DEPARTURES

STANDARD DEPARTURE INSTRUMENT (SID)	RUNWAY	TAKE OFF INSTRUCTIONS	DEPARTURE INSTRUCTIONS
VENTU ONE ECHO DEPARTURE (VEN 1E)	02L	CLIMB STRAIGHT AHEAD TO TOPOM. CROSS TOPOM AT OR ABOVE 2000FT. AT TOPOM TURN RIGHT AND TRACK 115° TO DOKTA THEN FOLLOW DEPARTURE INSTRUCTIONS.	AT DOKTA TURN RIGHT AND TRACK 173° TO DOBLU. CROSS DOKTA AT OR ABOVE 4 000FT. CROSS DOBLU AT OR BELOW 6 000FT OR AS DIRECTED BY ATC. AT DOBLU TRACK 177° TO DOSNO THEN TURN LEFT AND TRACK 128° TO VENTU. FROM VENTU, FOLLOW THE APPROPRIATE TRANSITION ROUTE TO JOIN THE ATS ROUTE.
VENTU ONE FOXTROT DEPARTURE (VEN 1F)	20R	CLIMB STRAIGHT AHEAD TO SUNVA. AT SUNVA TURN LEFT AND TRACK 172° TO SUSIN. CROSS SUNVA AT OR ABOVE 2 000FT. CROSS SUSIN AT OR ABOVE 4 000FT, THEN FOLLOW DEPARTURE INSTRUCTIONS.	AT SUSIN TURN LEFT AND TRACK 120° TO DOBLU. CROSS DOBLU AT OR BELOW 6 000 FT OR AS DIRECTED BY ATC. AT DOBLU, TURN RIGHT AND TRACK 177° TO DOSNO THEN TURN LEFT AND TRACK 128° TO VENTU. FROM VENTU, FOLLOW THE APPROPRIATE TRANSITION ROUTE TO JOIN THE ATS ROUTE.

(B) RADIO COMMUNICATIONS FAILURE PROCEDURE

1	SET TRANSPONDER TO MODE A/C CODE 7600
2	COMMUNICATIONS FAILURE OCCURS IMMEDIATELY AFTER DEPARTURE ON: (a) RWY 02L- PROCEED STRAIGHT AHEAD TO NYLON HOLDING AREA(NHA) CLIMBING TO THE LAST ASSIGNED ALTITUDE, THEREAFTER REFER TO SINGAPORE AIP ON RADIO COMMUNICATIONS FAILURE PROCEDURE. (b) RWY 20R- PROCEED STRAIGHT AHEAD TO SAMKO HOLDING AREA(SHA) CLIMBING TO THE LAST ASSIGNED ALTITUDE, THEREAFTER REFER TO SINGAPORE AIP ON RADIO COMMUNICATIONS FAILURE PROCEDURE.

(C) RADIAL AND DME FROM VOR/DME

WAY POINTS	VTK VOR/DME	SJ VOR/DME
DOBLU	VTK R-150.4/D24.2	SJ R-113.4/D24.0
DOKTA	VTK R-083/D9.4	SJ R-057/R23.2
DOSNO	VTK R-160.8/D39.0	SJ R-137.8/D34.1
SUNVA	VTK R-209.7/D8.0	SJ R-053.3/D7.6
SUSIN	VTK R-194.5/D12.8	SJ R-097.2/D6.9
TOPOM	VTK R-012.8/D5.1	SJ R-034.2/D20.0
VENTU	VTK R-140.2/D102.5	SJ R-131.6/D101.2