

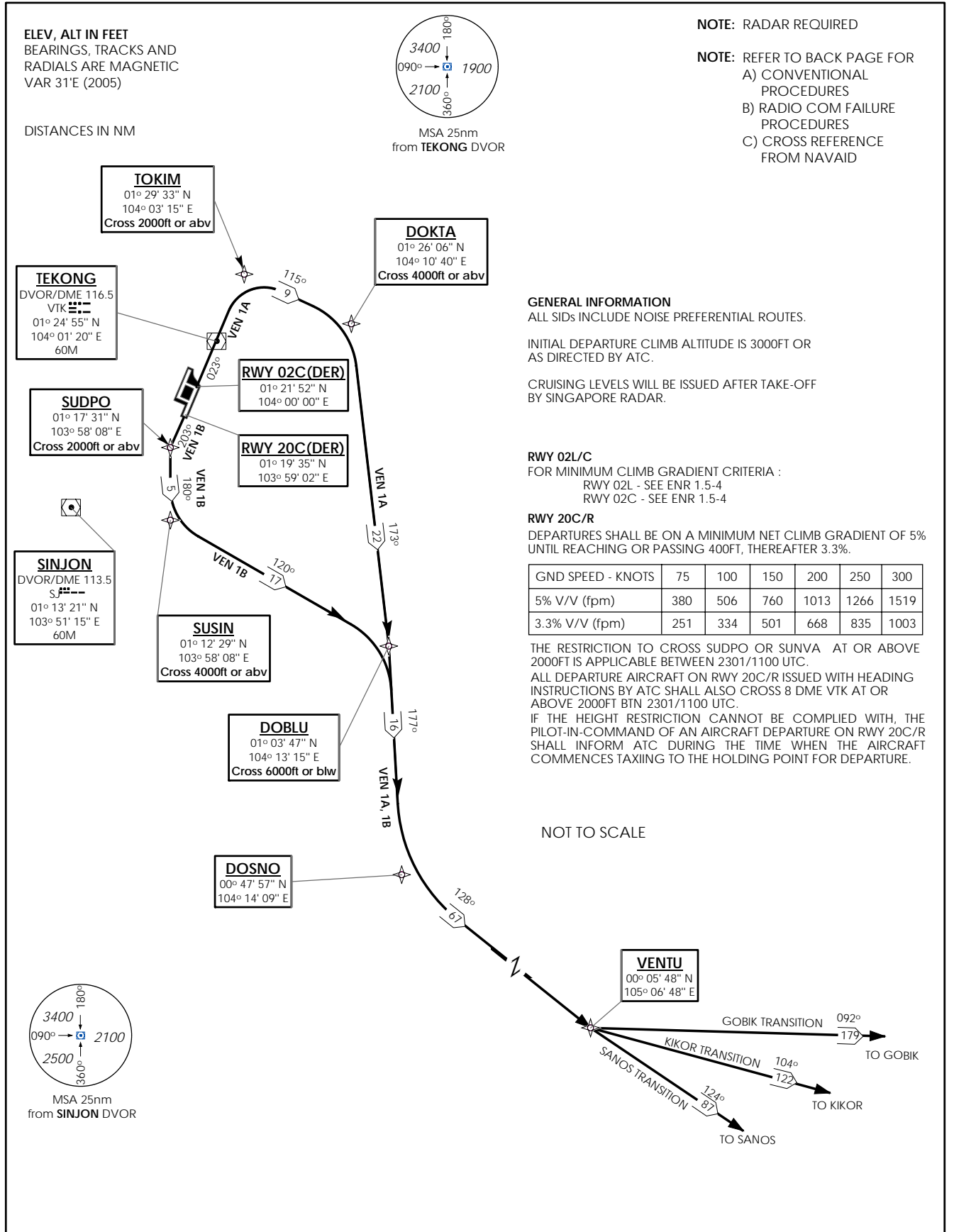
**STANDARD DEPARTURE CHART -  
INSTRUMENT (SID)**

TWR 118.6 / 118.25  
APP 120.3 / 124.05  
ACC 134.4

TRANSITION ALTITUDE  
11 000ft

D-ATIS AP ID-WSSS  
128.6

**SINGAPORE/Singapore Changi  
RWY 02C/20C  
VENTU DEPARTURES  
VEN 1A (R02C), VEN 1B (R20C)  
RNAV(GNSS)**



**(A) BASIC RNAV DEPARTURES**

For non-RNP1/P-RNAV approved aircraft or whose RNP1/P-RNAV capability have been degraded

**VENTU DEPARTURES**

STANDARD DEPARTURE INSTRUMENT (SID)	RUNWAY	TAKE OFF INSTRUCTIONS	DEPARTURE INSTRUCTIONS
VENTU ONE ALPHA DEPARTURE (VEN 1A)	02C	CLIMB STRAIGHT AHEAD TO TOKIM. CROSS TOKIM AT OR ABOVE 2000FT. AT TOKIM TURN RIGHT AND TRACK 115° TO DOKTA THEN FOLLOW DEPARTURE INSTRUCTIONS.	AT DOKTA TURN RIGHT AND TRACK 173° TO DOBLU. CROSS DOKTA AT OR ABOVE 4 000FT. CROSS DOBLU AT OR BELOW 6 000FT OR AS DIRECTED BY ATC. AT DOBLU TRACK 177° TO DOSNO THEN TURN LEFT AND TRACK 128° TO VENTU. FROM VENTU, FOLLOW THE APPROPRIATE TRANSITION ROUTE TO JOIN THE ATS ROUTE.
VENTU ONE BRAVO DEPARTURE (VEN 1B)	20C	CLIMB STRAIGHT AHEAD TO SUDPO. AT SUDPO TURN LEFT AND TRACK 180° TO SUSIN. CROSS SUDPO AT OR ABOVE 2 000FT. CROSS SUSIN AT OR ABOVE 4 000FT, THEN FOLLOW DEPARTURE INSTRUCTIONS.	AT SUSIN TURN LEFT AND TRACK 120° TO DOBLU. CROSS DOBLU AT OR BELOW 6 000 FT OR AS DIRECTED BY ATC. AT DOBLU, TURN RIGHT AND TRACK 177° TO DOSNO THEN TURN LEFT AND TRACK 128° TO VENTU. FROM VENTU, FOLLOW THE APPROPRIATE TRANSITION ROUTE TO JOIN THE ATS ROUTE.

**(B) RADIO COMMUNICATIONS FAILURE PROCEDURE**

1	SET TRANSPONDER TO MODE A/C CODE 7600
2	<p>COMMUNICATIONS FAILURE OCCURS IMMEDIATELY AFTER DEPARTURE ON:</p> <p>(a) RWY 02C- PROCEED STRAIGHT AHEAD TO NYLON HOLDING AREA(NHA) CLIMBING TO THE LAST ASSIGNED ALTITUDE, THEREAFTER REFER TO SINGAPORE AIP ON RADIO COMMUNICATIONS FAILURE PROCEDURE.</p> <p>(b) RWY 20C- PROCEED STRAIGHT AHEAD TO SAMKO HOLDING AREA(SHA) CLIMBING TO THE LAST ASSIGNED ALTITUDE, THEREAFTER REFER TO SINGAPORE AIP ON RADIO COMMUNICATIONS FAILURE PROCEDURE.</p>

**(C) RADIAL AND DME FROM VOR/DME**

WAY POINTS	VTK VOR/DME	SJ VOR/DME
DOBLU	VTK R-150.4/D24.2	SJ R-113.4/D24.0
DOKTA	VTK R-083/D9.4	SJ R-057/R23.2
DOSNO	VTK R-160.8/D39.0	SJ R-137.8/D34.1
SUDPO	VTK R-203.4/D8.0	SJ R-059.0/D8.0
SUSIN	VTK R-194.5/D12.8	SJ R-097.2/D6.9
TOKIM	VTK R-022.7/D5.0	SJ R-036.7/D20.1
VENTU	VTK R-140.2/D102.5	SJ R-131.6/D101.2