

STANDARD ARRIVAL CHART -  
INSTRUMENT (STAR)

ACC 133.25  
APP 124.05 / 120.3  
ARR 119.3  
TWR 118.6 / 118.25

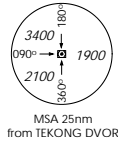
TRANSITION ALTITUDE  
11 000ft

D-ATIS AP ID-WSSS  
128.6

SINGAPORE/Singapore Changi  
RWY 02L/C  
BOBAG ONE ALPHA ARRIVAL  
BOBAG 1A  
RNAV(GNSS)

ELEV. ALT IN FEET  
BEARINGS, TRACKS AND  
RADIALS ARE MAGNETIC  
VAR 31°E (2005)

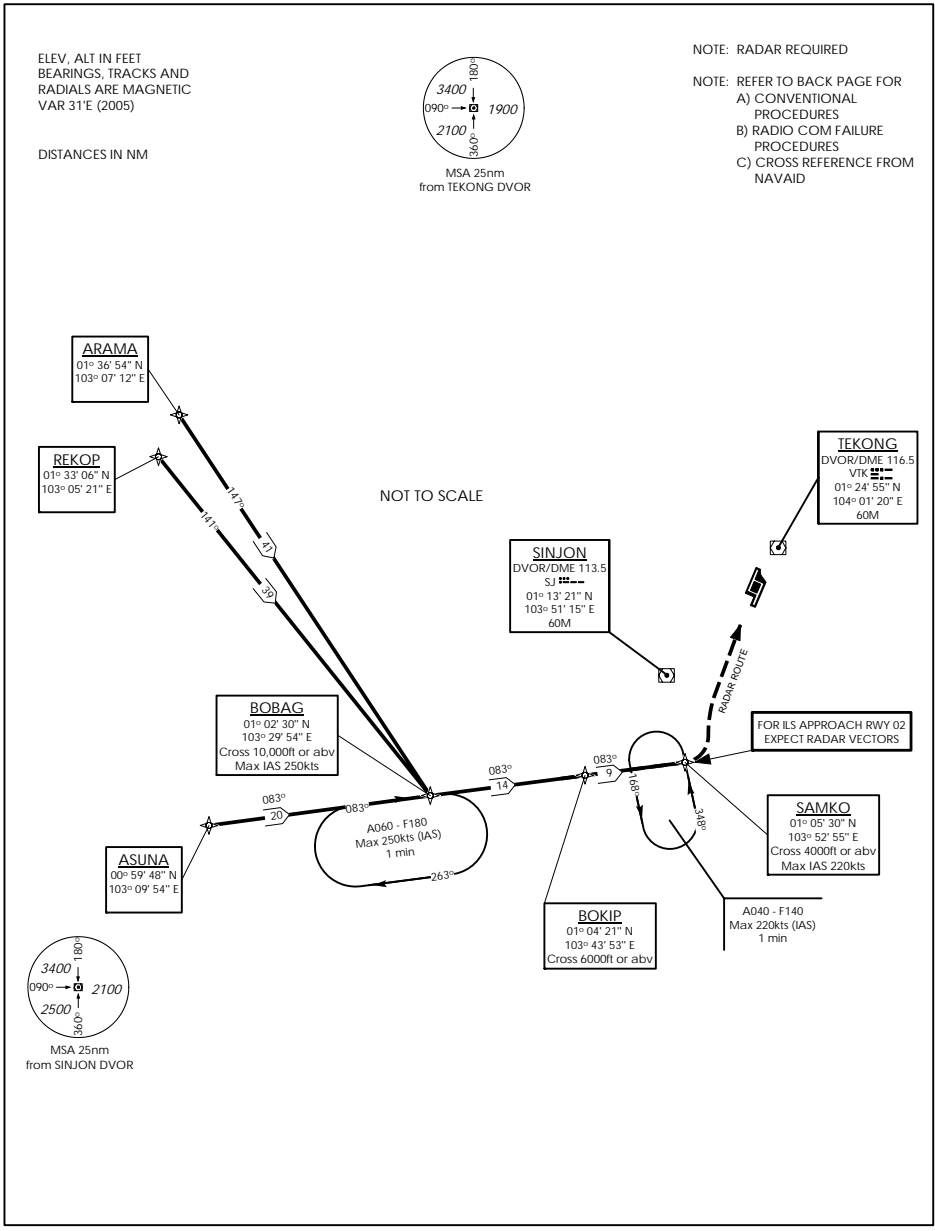
DISTANCES IN NM



NOTE: RADAR REQUIRED

- NOTE: REFER TO BACK PAGE FOR
- A) CONVENTIONAL PROCEDURES
  - B) RADIO COM FAILURE PROCEDURES
  - C) CROSS REFERENCE FROM NAVAID

NOT TO SCALE



→ (A) BASIC RNAV ARRIVAL

For non-RNP1/P-RNAV approved aircraft or whose RNP1/P-RNAV capability have been degraded

TRANSITIONS/ROUTE	BOBAG ONE ALPHA ARRIVAL (BOBAG 1A)
ARAMA: <u>FROM ARAMA TO BOBAG</u> (A464) FROM ARAMA TRACK 147° TO BOBAG. THEN FOLLOW THE APPROPRIATE BOBAG ARRIVAL.	AT BOBAG TRACK 083° TO BOKIP THEN TO SAMKO. CROSS BOBAG AT OR ABOVE 10 000FT AT MAX IAS 250 KTS. CROSS BOKIP AT OR ABOVE 6 000FT. CROSS SAMKO AT OR ABOVE 4 000FT AT MAX IAS 220KTS. FROM SAMKO, EXPECT RADAR VECTORS FOR ILS APPROACH RUNWAY 02.
REKOP: <u>FROM REKOP TO BOBAG</u> (A576) FROM REKOP TRACK 141° TO BOBAG. THEN FOLLOW THE APPROPRIATE BOBAG ARRIVAL.	
R469	

(B) RADIO COMMUNICATIONS FAILURE PROCEDURE

1	SET TRANSPONDER TO MODE A/C CODE 7600
2	When cleared via BOBAG 1A by Singapore ATC (a) Maintain last assigned flight level or altitude and proceed on BOBAG 1A to SAMKO (b) From SAMKO commence descent and carry out appropriate landing procedure for RWY 02 as close as possible to EAT or ETA (c) If unable to effect a landing, refer to Singapore AIP for missed approach procedure
3	No clearance or instruction received from Singapore ATC - refer to Singapore AIP for radio communications failure procedure

(C) RADIAL AND DME FROM VOR/DME

WAY POINTS	VTK VOR/DME	SJ VOR/DME
ARAMA	VTK R-282.4/D55.5	SJ R-298.0/D50.0
ASUNA	VTK R-244.1/D57.3	SJ R-252.0/D43.6
BOBAG	VTK R-234.7/D38.6	SJ R-243.2/D24.0
BOKIP	VTK R-220.5/D27.0	SJ R-219.5/D11.6
REKOP	VTK R-278.3/D56.6	SJ R-293.1/D50.0
SAMKO	VTK R-203.5/D21.1	SJ R-168.0/D8.0