

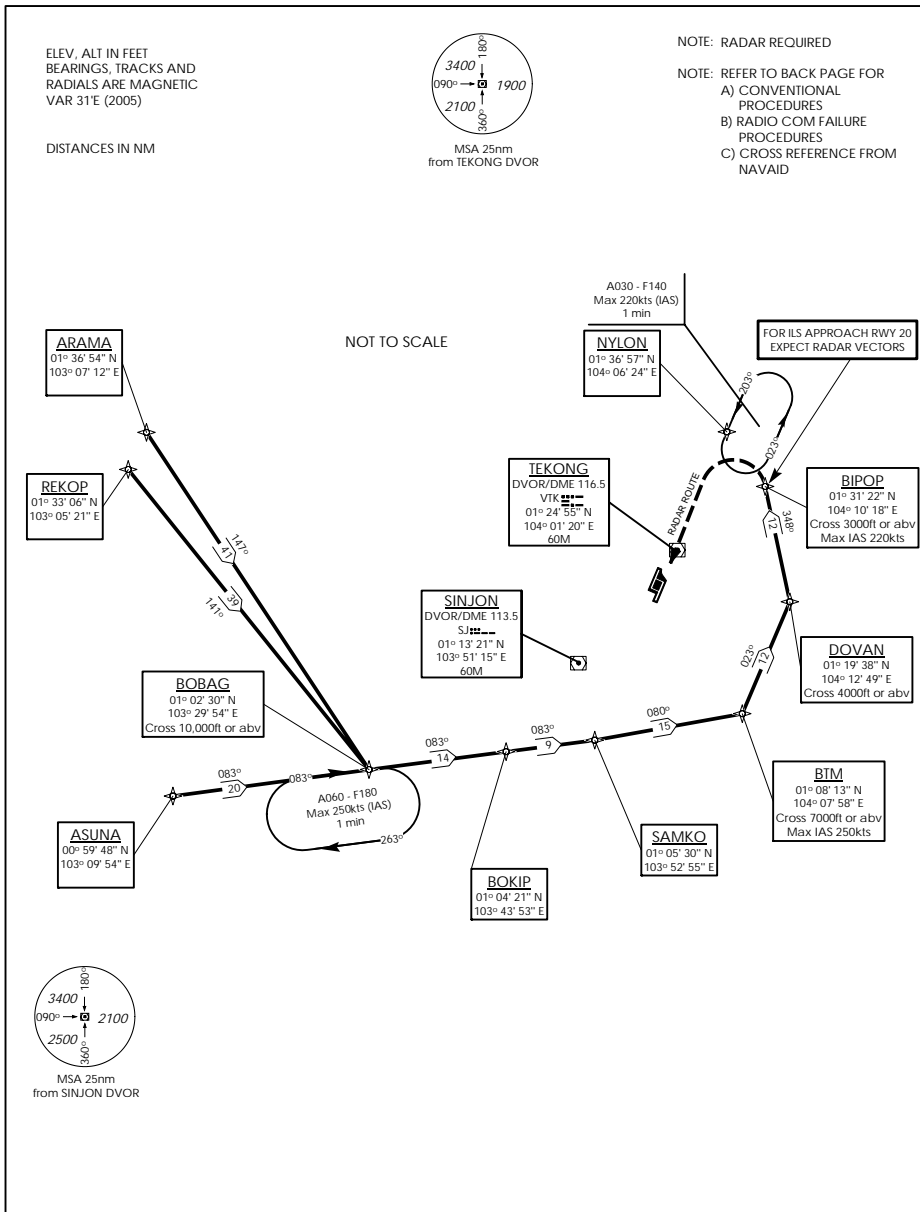
STANDARD ARRIVAL CHART -  
INSTRUMENT (STAR)

ACC 133.25  
APP 124.05 / 120.3  
ARR 119.3  
TWR 118.6 / 118.25

TRANSITION ALTITUDE  
11 000ft

D-ATIS AP ID-WSSS  
128.6

SINGAPORE/Singapore Changi  
RWY 20R/C  
BOBAG ONE BRAVO ARRIVAL  
BOBAG 1B  
RNAV<sub>(GNSS)</sub>



→ (A) BASIC RNAV ARRIVAL

For non-RNP1/P-RNAV approved aircraft or whose RNP1/P-RNAV capability have been degraded

TRANSITIONS/ROUTE	BOBAG ONE BRAVO ARRIVAL (BOBAG 1B)
ARAMA: (A464) <u>FROM ARAMA TO BOBAG</u> FROM ARAMA TRACK 147° TO BOBAG. THEN FOLLOW THE APPROPRIATE BOBAG ARRIVAL.	AT BOBAG TRACK 083° TO BOKIP THEN TO SAMKO. CROSS BOBAG AT OR ABOVE 10 000FT. AT SAMKO TURN LEFT AND TRACK 080° TO BTM DVOR/DME. AT BTM DVOR/DME TURN LEFT AND TRACK 023° TO DOVAN. CROSS BTM DVOR/DME AT OR ABOVE
REKOP: (A576) <u>FROM REKOP TO BOBAG</u> FROM REKOP TRACK 141° TO BOBAG. THEN FOLLOW THE APPROPRIATE BOBAG ARRIVAL.	7 000FT AT MAX IAS 250KTS OR AS DIRECTED BY ATC. AT DOVAN TURN LEFT AND TRACK 348° TO BIPOP. CROSS DOVAN AT OR ABOVE 4 000FT. CROSS BIPOP AT OR ABOVE 3 000FT AT MAX IAS 220KTS. FROM BIPOP, EXPECT RADAR VECTORS FOR ILS APPROACH RWY 20.
R469	

(B) RADIO COMMUNICATIONS FAILURE PROCEDURE

1	SET TRANSPONDER TO MODE A/C CODE 7600
2	When cleared via BOBAG 1B by Singapore ATC (a) Maintain last assigned flight level or altitude and proceed on BOBAG 1B to BIPOP, then direct to NYLON (b) From NYLON commence descent and carry out appropriate landing procedure for RWY 20 as close as possible to EAT or ETA (c) If unable to effect a landing, refer to Singapore AIP for missed approach procedure
3	No clearance or instruction received from Singapore ATC - refer to Singapore AIP for radio communications failure procedure

(C) RADIAL AND DME FROM VOR/DME

WAY POINTS	VTK VOR/DME	SJ VOR/DME
ARAMA	VTK R-282.4/D55.5	SJ R-298.0/D50.0
ASUNA	VTK R-244.1/D57.3	SJ R-252.0/D43.6
BOBAG	VTK R-234.7/D38.6	SJ R-243.2/D24.0
BOKIP	VTK R-220.5/D27.0	SJ R-219.5/D11.6
BIPOP	VTK R-054.5/D11.0	SJ R-046.8/D26.2
BTM	VTK R-158.2/D17.9	SJ R-107.0/D17.5
DOVAN	VTK R-114.6/D12.7	SJ R-073.9/D22.5
NYLON	VTK R-023.0/D13.0	SJ R-032.9/D30.0
REKOP	VTK R-278.3/D56.6	SJ R-293.1/D50.0
SAMKO	VTK R-203.5/D21.1	SJ R-168.0/D8.0