

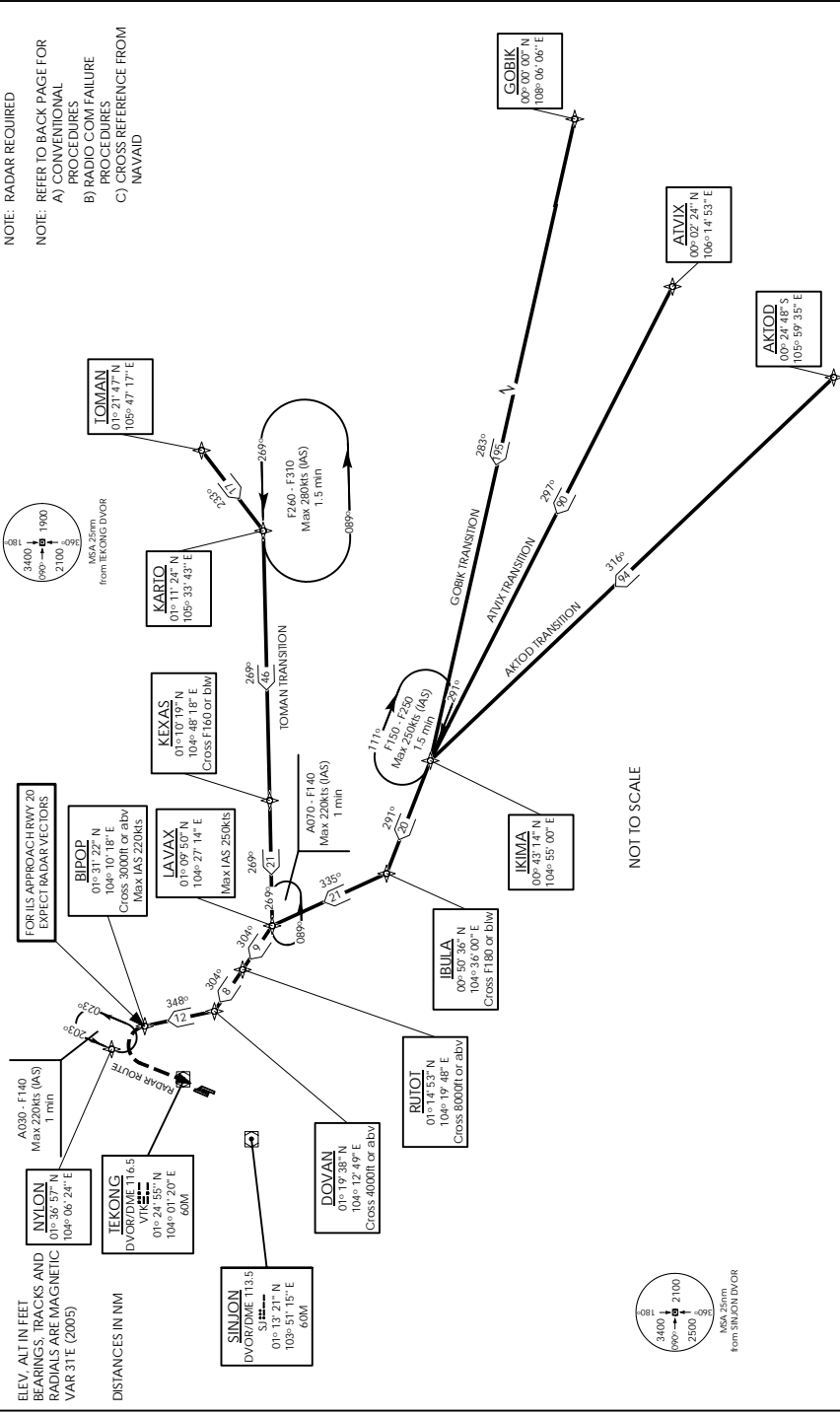
SINGAPORE/Singapore Changi
RWY 20R/C
LAVAX ONE BRAVO ARRIVAL
LAVAX 1B
RNAV(GNSS)

STANDARD ARRIVAL CHART -
INSTRUMENT (STAR)

ACC 134.2 / 134.4
APP 124.05 / 120.3
ARR 119.3
TWR 118.6 / 118.25

TRANSITION ALTITUDE
11 000ft

D-ATIS AP ID-WSSS
128.6



(A) BASIC RNAV ARRIVAL

For non-RNP1/P-RNAV approved aircraft or whose RNP1/P-RNAV capability have been degraded

TRANSITIONS/ROUTE	LAVAX ONE BRAVO ARRIVAL (LAVAX 1B)
<p>ATVIX: <u>FROM ATVIX TO LAVAX</u> (A464) TRACK 297° FROM ATVIX TO IKIMA, THEN 291° TO IBULA. CROSS IBULA AT OR BELOW F180. AT IBULA, TRACK 335° TO LAVAX. CROSS LAVAX AT MAX IAS 250KTS THEN FOLLOW APPROPRIATE LAVAX ARRIVAL.</p>	<p>AT LAVAX TRACK 304° TO RUTOT AND THEN TO DOVAN. CROSS RUTOT AT OR ABOVE 8 000FT OR AS DIRECTED BY ATC. CROSS DOVAN AT OR ABOVE 4 000FT. FROM DOVAN, TRACK 348° TO BIPOP. CROSS BIPOP AT OR ABOVE 3 000FT AT MAX IAS 220KTS. FROM BIPOP, EXPECT RADAR VECTORS FOR ILS APPROACH RWY 20.</p>
<p>AKTOD: <u>FROM AKTOD TO LAVAX</u> (A576) TRACK 316° FROM AKTOD TO IKIMA, THEN TRACK 291° TO IBULA. CROSS IBULA AT OR BELOW F180. AT IBULA, TRACK 335° TO LAVAX. CROSS LAVAX AT MAX IAS 250KTS THEN FOLLOW APPROPRIATE LAVAX ARRIVAL.</p>	
<p>GOBIK: <u>FROM GOBIK TO LAVAX</u> TRACK 283° FROM GOBIK TO IKIMA, THEN TRACK 291° TO IBULA. CROSS IBULA AT OR BELOW F180. AT IBULA, TRACK 335° TO LAVAX. CROSS LAVAX AT MAX IAS 250KTS THEN FOLLOW APPROPRIATE LAVAX ARRIVAL.</p>	
<p>TOMAN: <u>FROM TOMAN TO LAVAX</u> TRACK 233° FROM TOMAN TO KARTO. AT KARTO, TURN RIGHT TRACK 269° TO KEXAS THEN TO LAVAX. CROSS KEXAS AT OR BELOW F160 THEN FOLLOW APPROPRIATE LAVAX ARRIVAL.</p>	

(B) RADIO COMMUNICATIONS FAILURE PROCEDURE

1	SET TRANSPONDER TO MODE A/C CODE 7600
2	<p>When cleared via LAVAX 1B by Singapore ATC</p> <p>(a) Maintain last assigned flight level or altitude and proceed on LAVAX 1B to BIPOP, then direct to NYLON</p> <p>(b) From NYLON commence descent and carry out appropriate landing procedure for RWY 20 as close as possible to EAT or ETA</p> <p>(c) If unable to effect a landing, refer to Singapore AIP for missed approach procedure</p>
3	<p>No clearance or instruction received from Singapore ATC</p> <p>- refer to Singapore AIP for radio communications failure procedure</p>

(C) RADIAL AND DME FROM VOR/DME

WAY POINTS	VTK VOR/DME	SJ VOR/DME
AKTOD	VTK R-132.7/D161.1	SJ R-127.2/D161.4
ATVIX	VTK R-121.5/D157.0	SJ R-116.1/D160.3
BIPOP	VTK R-054.5/D11.0	SJ R-046.8/D26.2
DOVAN	VTK R-114.6/D12.7	SJ R-073.9/D22.5
GOBIK	VTK R-109.0/D259.3	SJ R-106.0/D265.5
IBULA	VTK R-134.5/D48.7	SJ R-116.8/D50.2
IKIMA	VTK R-127.6/D67.9	SJ R-115.1/D70.5
KARTO	VTK R-098.3/D93.5	SJ R-091.1/D102.6
KEXAS	VTK R-107.2/D49.2	SJ R-093.0/D57.2
LAVAX	VTK R-120.1/D30.0	SJ R-095.5/D36.2
NYLON	VTK R-023.0/D13.0	SJ R-032.9/D30.0
RUTOT	VTK R-118.4/D21.0	SJ R-087.0/D28.6
TOMAN	VTK R-091.7/D106.2	SJ R-085.9/D116.5