

STANDARD ARRIVAL CHART -
INSTRUMENT (STAR)

ACC 133.25
APP 124.05 / 120.3
ARR 119.3
TWR 118.6 / 118.25

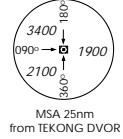
TRANSITION ALTITUDE
11 000ft

D-ATIS AP ID-WSSS
128.6

SINGAPORE/Singapore Changi
RWY 20R/C
LELIB TWO BRAVO ARRIVAL
LELIB 2B
RNAV(GNSS)

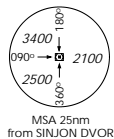
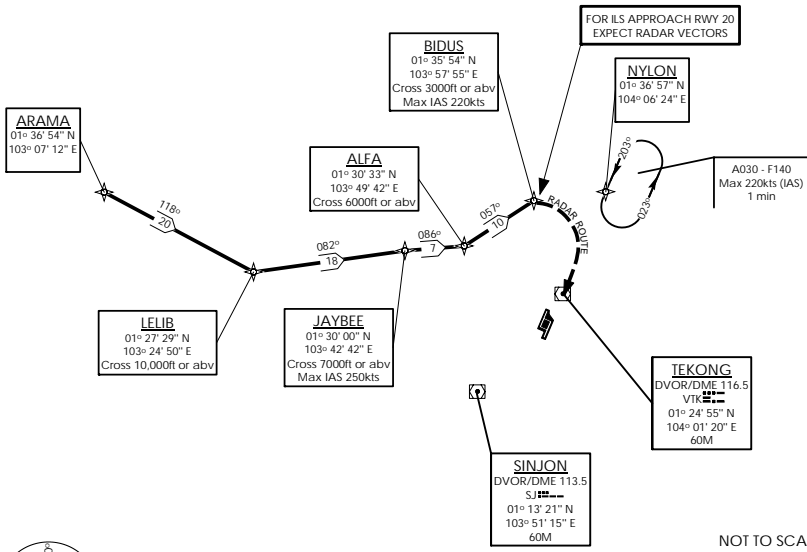
ELEV. ALT IN FEET
BEARINGS, TRACKS AND
RADIALS ARE MAGNETIC
VAR 31°E (2005)

DISTANCES IN NM



NOTE: RADAR REQUIRED

- NOTE: REFER TO BACK PAGE FOR
- A) CONVENTIONAL PROCEDURES
 - B) RADIO COM FAILURE PROCEDURES
 - C) CROSS REFERENCE FROM NAVAID



→ (A) BASIC RNAV ARRIVAL

For non-RNP1/P-RNAV approved aircraft or whose RNP1/P-RNAV capability have been degraded

TRANSITIONS/ROUTE	LELIB TWO BRAVO ARRIVAL (LELIB 2B)
A464	AT LELIB, TURN LEFT AND TRACK 082° TO JB (JAYBEE) NDB. CROSS LELIB AT OR ABOVE 10 000FT. CROSS JB (JAYBEE) NDB AT OR ABOVE 7 000FT AT MAX IAS 250KTS. FROM JB (JAYBEE) NDB TRACK 086° TO ALFA. AT ALFA, TURN LEFT AND TRACK 057° TO BIDUS. CROSS ALFA 6 000FT OR ABOVE. CROSS BIDUS 3 000FT OR ABOVE AT MAX IAS 220KTS. FROM BIDUS, EXPECT RADAR VECTORS FOR ILS APPROACH RWY 20.

(B) RADIO COMMUNICATIONS FAILURE PROCEDURE

1	SET TRANSPONDER TO MODE A/C CODE 7600
2	When cleared via LELIB 2B by Singapore ATC (a) Maintain last assigned flight level or altitude and proceed on LELIB 2B to BIDUS, then direct to NYLON. (b) From NYLON commence descent and carry out appropriate landing procedure for RWY 20 as close as possible to EAT or ETA (c) If unable to effect a landing, refer to Singapore AIP for missed approach procedure
3	No clearance or instruction received from Singapore ATC - refer to Singapore AIP for radio communications failure procedure

(C) RADIAL AND DME FROM VOR/DME

WAY POINTS	VTK VOR/DME	SJ VOR/DME
ALFA	VTK R-295.7/D12.9	SJ R-354.8/D17.2
ARAMA	VTK R-282.4/D55.5	SJ R-298.0/D50.0
BIDUS	VTK R-326.0/D13.2	SJ R-6.9/D22.6
JB (JAYBEE)	VTK R-285.1/D19.3	SJ R-332.6/D18.6
LELIB	VTK R-274.0/D36.6	SJ R-298.0/D30.0
NYLON	VTK R-023.0/D13.0	SJ R-032.9/D30.0