

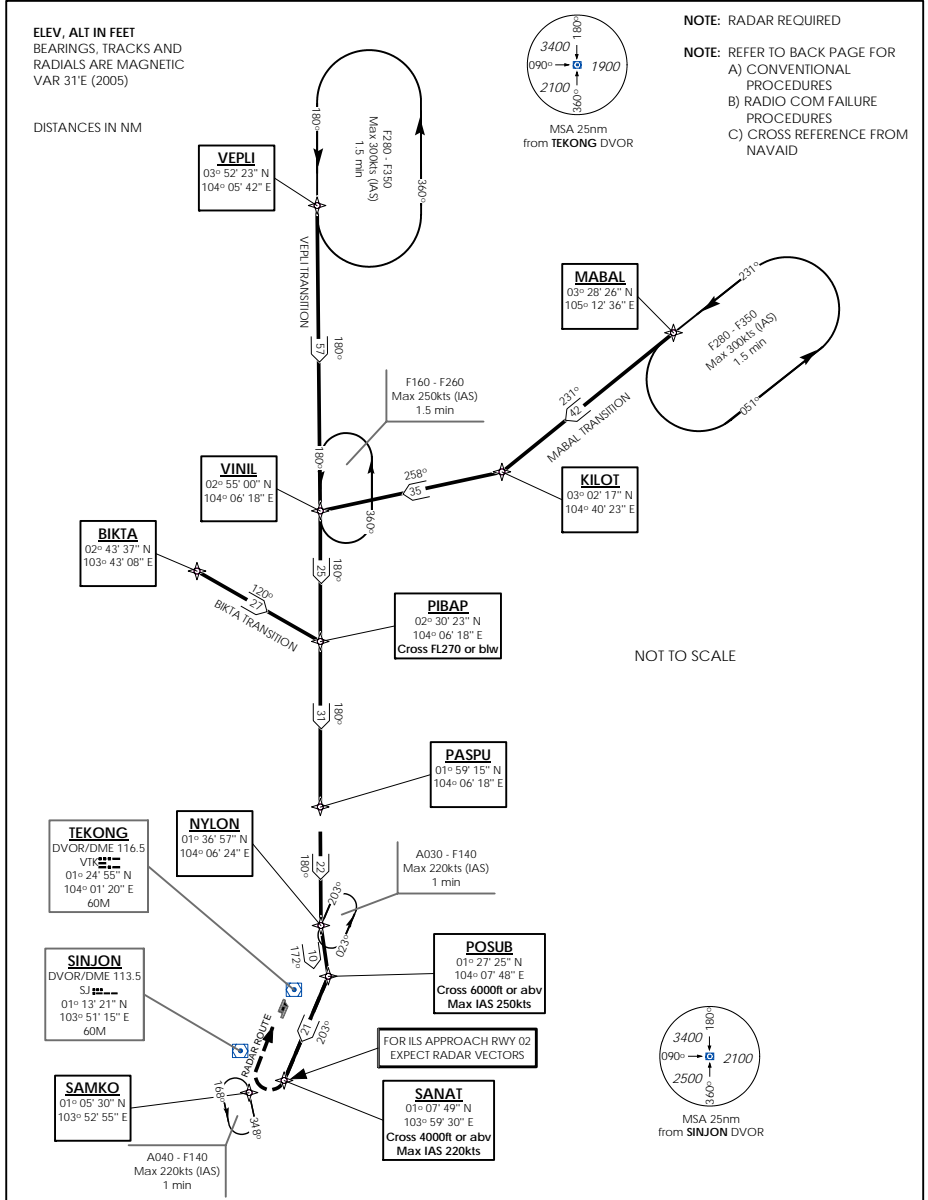
**STANDARD ARRIVAL CHART -
INSTRUMENT (STAR)**

ACC 133.8 / 127.3
APP 124.05 / 120.3
ARR 119.3
TWR 118.6 / 118.25

TRANSITION ALTITUDE
11 000ft

D-ATIS AP ID-WSSS
128.6

**SINGAPORE/Singapore Changi
RWY 02L/C**
**PASPU ONE ALPHA ARRIVAL
PASPU 1A**
RNAV(GNSS)



(A) BASIC RNAV ARRIVAL

For non-RNP1/P-RNAV approved aircraft or whose RNP1/P-RNAV capability have been degraded

TRANSITIONS/ROUTE	PASPU ONE ALPHA ARRIVAL (PASPU 1A)
BIKTA (M751/B469): FROM BIKTA TO PASPU AT BIKTA TRACK 120° TO PIBAP THEN TURN RIGHT AND TRACK 180° TO PASPU. CROSS PIBAP AT OR BELOW FL270. THEN FOLLOW THE APPROPRIATE PASPU ARRIVAL.	AT PASPU TRACK 180° TO NYLON. FROM NYLON TRACK 172° TO POSUB. AT POSUB, TURN RIGHT AND TRACK 203° TO SANAT. CROSS POSUB AT OR ABOVE 6 000FT AT MAX IAS 250KTS, OR AS DIRECTED BY ATC. CROSS SANAT AT OR ABOVE 4 000FT AT MAX IAS 220KT. FROM SANAT, EXPECT RADAR VECTORS FOR ILS APPROACH RWY02.
VEPLI(L642): FROM VEPLI TO PASPU AT VEPLI TRACK 180° TO PIBAP THEN TO PASPU. CROSS PIBAP AT OR BELOW FL270. THEN FOLLOW THE APPROPRIATE PASPU ARRIVAL.	
MABAL(N892): FROM MABAL TO PASPU AT MABAL TRACK 231° TO KILOT THEN TURN RIGHT TO TRACK 258° TO VINIL. FROM VINIL TURN LEFT TRACK 180° TO PIBAP THEN TO PASPU. CROSS PIBAP AT OR BELOW FL270. THEN FOLLOW THE APPROPRIATE PASPU ARRIVAL.	

(B) RADIO COMMUNICATIONS FAILURE PROCEDURE

1	SET TRANSPONDER TO MODE A/C CODE 7600
2	When cleared via PASPU 1A by Singapore ATC (a) Maintain last assigned flight level or altitude and proceed on PASPU 1A to SANAT, then direct to SAMKO (b) From SAMKO commence descent and carry out appropriate landing procedure for RWY 02 as close as possible to EAT or ETA (c) If unable to effect a landing, refer to Singapore AIP for missed approach procedure
3	No clearance or instruction received from Singapore ATC - refer to Singapore AIP for radio communications failure procedure

(C) RADIAL AND DME FROM VOR/DME

WAY POINTS	VTK VOR/DME	SJ VOR/DME
BIKTA	VTK R-346.9/D80.4	SJ R-355.0/D90.2
KILOT	VTK R-022.0/D104.5	SJ R-024.4/D119.0
MABAL	VTK R-030.1/D142.1	SJ R-031.2/D157.2
NYLON	VTK R-023.0/D13.0	SJ R-032.9/D30.0
PASPU	VTK R-008.3/D34.5	SJ R-018.3/D48.1
PIBAP	VTK R-004.4/D65.3	SJ R-011.1/D78.1
POSUB	VTK R-069.0/D6.9	SJ R-049.8/D21.7
SAMKO	VTK R-203.5/D21.1	SJ R-168.0/D8.0
SANAT	VTK R-186.1/D17.1	SJ R-123.7/D9.9
VEPLI	VTK R-001.7/D146.8	SJ R-005.2/D158.9
VINIL	VTK R-003.2/D89.8	SJ R-008.5/D102.3